

Микросхемы LED драйверов Bright Power Semiconductor



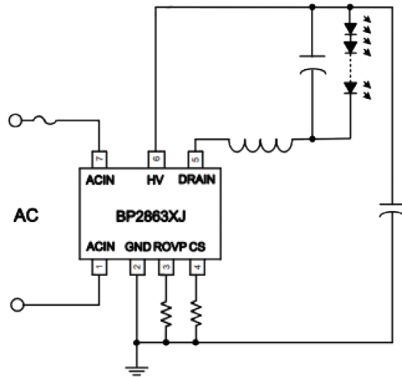
www.platan.ru

Тел.: +7 (495) 252-07-77

Факс: +7 (495) 252-07-00

E-mail: sales@platan-energo.ru

AC/DC Non-Isolated LPF-BP2863#X

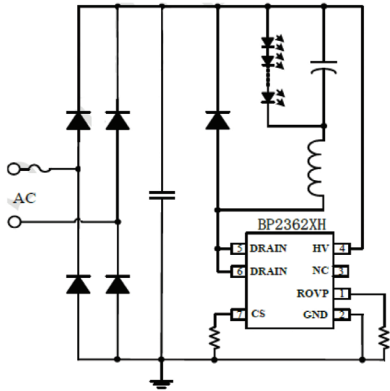


Features

- Internal Diode And bridge
- ASOP7
- No Vcc Capacitor
- XJ With Ovp Function
- XK With 120°C
- DOB Solution

	P/N	Package	PF	HV-Vcc	MOSFET		OTP	VCC	OVP	DIODE INTERNAL	BRIDGE INTERNAL	Vin=176Vac-265Vac	
					RDS-ON	Vds		INTERNAL				Iout max (mA)	Pout max(W)
AC/DC Non-isolated 0.5PF	BP2863MC	ASOP-7	0.5	Y	22Ω	500V	140°C	Y	-	Y	Y	100	9
	BP2863MJ	ASOP-7	0.5	Y	22Ω	500V	140°C	Y	Y	Y	Y	120	12
	BP2863SJ	ASOP-7	0.5	Y	16Ω	500V	140°C	Y	Y	Y	Y	160	16
	BP2863AJ	ASOP-7	0.5	Y	12Ω	500V	140°C	Y	Y	Y	Y	190	17
	BP2863L	ASOP-7	0.5	Y	28Ω	500V	140°C	Y	-	Y	Y	100	9
	BP2863M	ASOP-7	0.5	Y	22Ω	500V	140°C	Y	-	Y	Y	120	12
	BP2863S	ASOP-7	0.5	Y	16Ω	500V	140°C	Y	-	Y	Y	160	16
	BP2863A	ASOP-7	0.5	Y	12Ω	500V	140°C	Y	-	Y	Y	190	17
	BP2863MK	ASOP-7	0.5	Y	22Ω	500V	120°C	Y	-	Y	Y	120	12
	BP2863SK	ASOP-7	0.5	Y	16Ω	500V	120°C	Y	-	Y	Y	160	16
	BP2863AK	ASOP-7	0.5	Y	12Ω	500V	120°C	Y	-	Y	Y	190	17

AC/DC Non-Isolated HPF-BP2362XH

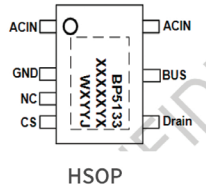


Features

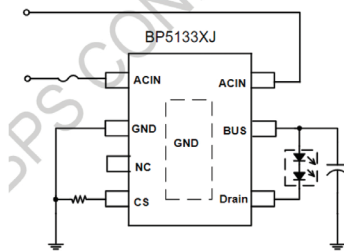
- THD <15%
- Pass Individual Harmonics
- No Start Up Resistors
- No Vcc Capacitor
- LED Short And Open Protection

AC/DC Non-isolated 0.9PF	P/N	Package	PF	No VCC No COMP	MOSFET		Target Market	OVP	THD	Subharmonic	Iout (mA)	
					RDS-ON	Vds					Vin=100Vac-265Vac	72V Vout
	BP2362BH	SOP7	0.9	Y	9Ω	500V	Global	External	<15%	Y	<150	<150
	BP2362CH	SOP7	0.9	Y	5Ω	500V	Global	External	<15%	Y	<180	<180
	BP2362EH	SOP7	0.9	Y	3Ω	500V	Global	External	<15%	Y	<240	<240
	BP2362GH	SOP7	0.9	Y	1.9Ω	500V	Global	External	<15%	Y	<270	<270
	BP2362JH	SOP7	0.9	Y	1.9Ω	600V	Global	External	<15%	Y	<270	<270

Linear-Single-Channel BP5133XJ



	P/N	Package	Power	Iout max	MOS BV
Single Segment Linear DOB	BP5133AJ	HSOP-7	7W	60mA	500V
	BP5133DJ	HSOP-7	10W	80mA	500V

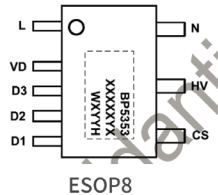


BP5133XJ Typical Application

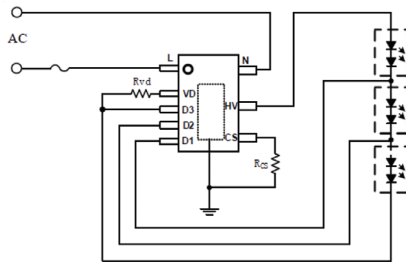
Features

- Low Cost, No Transformer, SMT Production
- Pass EMC/EMI , No Need LC Filter
- No Bridge

Linear-Multi-Channel BP5353H



Symbol	Parameters	Range
LED	LED output current @220V	<40 mA
LED	LED output current @110V	<80 mA



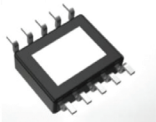
BP5353H Typical Application

Features

- Small size, remove transformer, SMT production
- 3 segment output, THD <15%
- Internal Vcc supply, 700V HV MOS
- Easy pass EMC/EMI test, no need LC filter
- Line compensation, constant input power
- PASS 4KV & 440Vac

ErP/CEC 5Channel I²C RGBCW

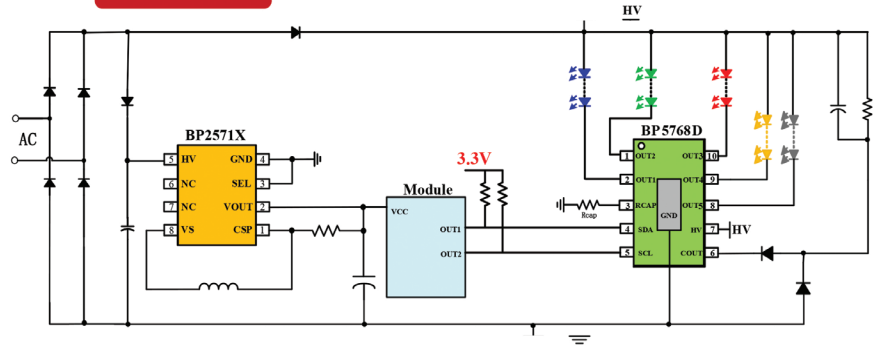
BP5768D



ESSOP-10



SCH



Feature

- I²C Smart color change
- RGBCW color order can be customized
- Each channel max current can set up, Accuracy :1mA/step
- Each Channel 1024 gray level adjustment
- OUT1/2/3/4/5channel max current 90mA, High voltage500V
- Dimming: 1%-100%

CMOD	Module Max current	Solution	Power
Wi-Fi	300mA	BP5768D+BP2571B	10W
	500mA	BP5768D+BP2571D	10W
Blue T/ Zigbee/ RF	<60mA	BP5768D+BP8521C	10W

Small Size BT filament

Application



三种色温可供选择
Three color temperatures are available

暖白光
(2700-3100K)
暖白光柔和温馨



自然光
(4000-4500K)
自然光柔和真实



正白光
(6000-6500K)
正白光柔和明亮



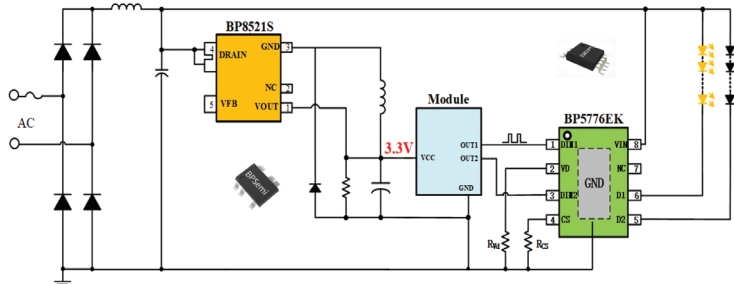
E14



G9

SCH

BP5776EK+BP8521S



背面



侧面



正面

COMD	Module Max current	Solution	Max power	station
BT/ Zigbee/ RF	<60mA	BP5776EK+BP8521S	4.9W	Sample

North America linear TRIAC dimming

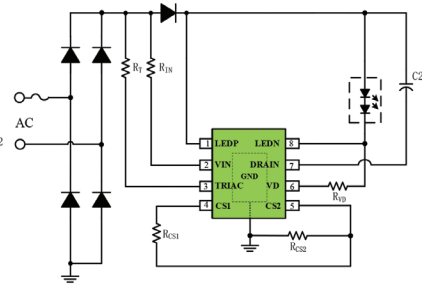
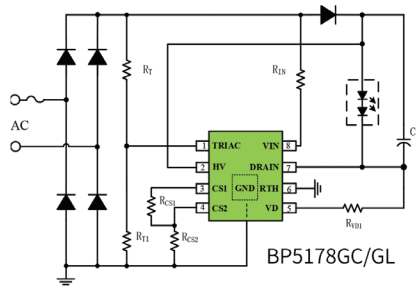
Application

Filament, Bulb, spotlight, downlight

Package: ESOP8



SCH



BP5178BC Internal ripple remove

Part No	External components	Power
BP5178BC	Remove Vcc cap + Internal ripple remove	5W
BP5188GL	Remove Vcc cap + Internal Diode	10W
BP5178GCL	Remove Vcc Cap	10W
BP5178GC		10W
BP5178GL		10W
BP5178FL	External Vcc cap	15W

0-10V dimming with isolated solution

Application: Panel light

Smoothly Dimming by 0-10V Dimmer

Dimm down to 0.1% at minimum light level, no flashing, no noise.



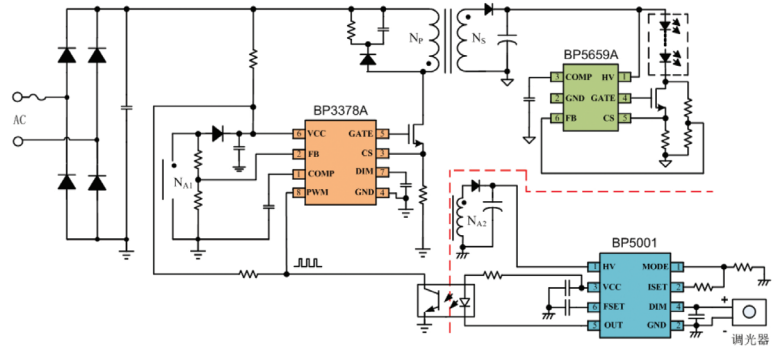
2x2 LED FLAT PANEL LIGHT



Main Feature

- PF>0.95, THD<5%;
- Output LF current ripple (< 120 Hz):<0.5%
- Meets PST & SVM standard (<1/<0.4);
- HPF flyback operates in QR mode;
- Built-in CC+ CV mode (BP3378AD);
- Support min. 5% dimming range;
- PWM+REST dimming input;

SCH



Power	Solution
30-80W@90-277Vac	BP3378A+BP5659A+BP5001
	BP3378AD+BP5659A+BP5001D

High Power: 0-10V dimming isolated solution

Application: Panel light



5000K
7800 lumens

75Watt
LED PANEL LIGHT



40% 68% 80% 100%

5000K Daylight Over 50000Hr 0-10v Dimmable 5 Years

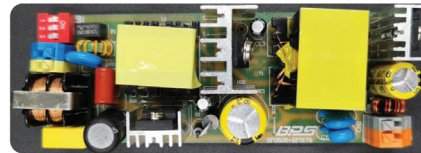
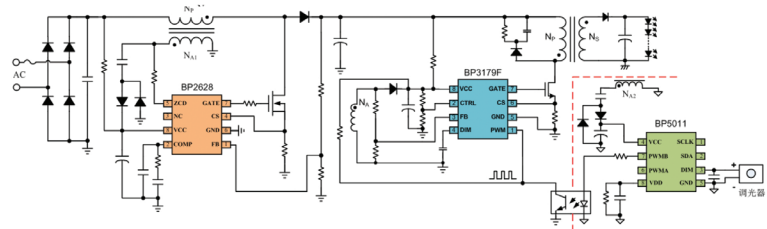
2x4 FT FLAT PANEL
Dimmable to 10% using low voltage wiring, compatible with 0-10-Volt dimmers
Innovated dimmable (0 Lumens - 7800 Lumens)

Dimmable
7800Lumens

Main Feature

- PF>0.95,THD<5%;
- Output LF current ripple (< 120 Hz):<1%;
- Meets PST & SVM standard(<1/<0.4);
- Efficiency>88%@220Vac,200W;
- Boost & Flyback controller operates in QR mode;
- Support the CV mode during the deep dimming;

SCH

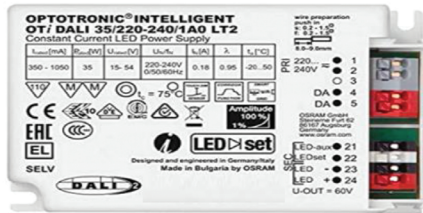


Power range	Solution
<100W@230Vac	BP2628+BP3179F+BP5011

0-10V deep dimming with isolated solution

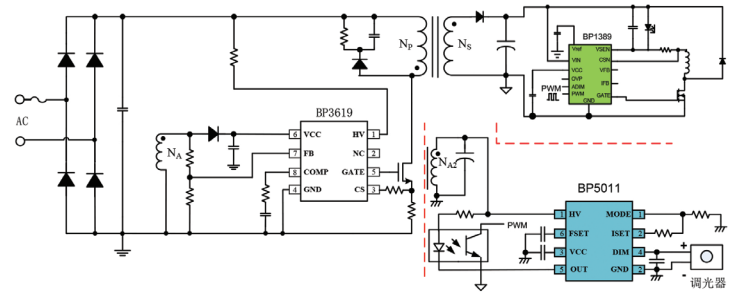
Application: 0-10V Dim、DALI Dim

SCH



Main Feature

- PF>0.95, THD<5%;
- Output LF current ripple (< 120 Hz):<0.5%;
- Meets PST & SVM standard (<1/<0.4);
- HPF flyback operates in QR mode;
- DC-DC operates in CCM mode;
- Supports 0.5% deep dimming;
- Built-in analog & PWM dimming;

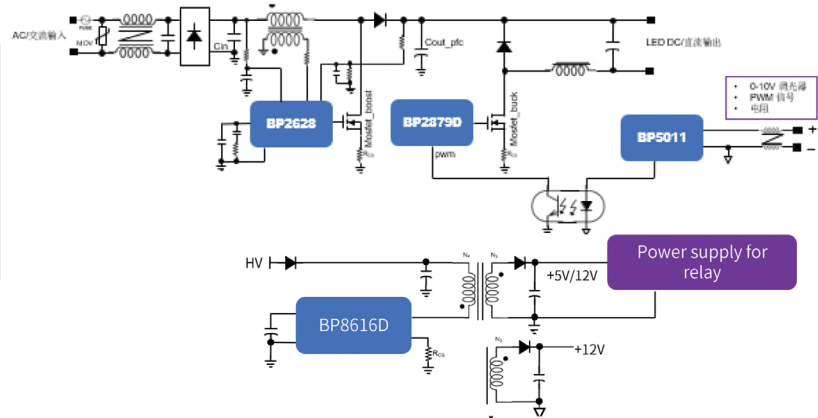


Power	HPF Flyback	DC-DC	Dim
<100W @90-277Vac	BP3609	BP1386	0-10V/PWM
	BP3619	BP1389	DALI

High Power: 0-10V dimming non-isolated solution

Application: Mining lamps/High-bay

SCH



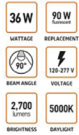
Main Feature

- PF>0.95, THD<5%;
- Output LF current ripple (< 120 Hz):<0.5%;
- Meets PST & SVM standard (<1/<0.4);
- Efficiency>95%@230Vac, 200W;
- Boost & Buck controller operates in QR mode;
- Support the isolated auxiliary power for sensor using;

Power	Boost	Buck	0-10V	12V100mA
<250W @90-277Vac	BP2628	BP2879	BP5011	BP8616D
	BP2628A	BP2879D		

Non-dimmable non-isolated solution

Application: Tri-Proof Light/Tube



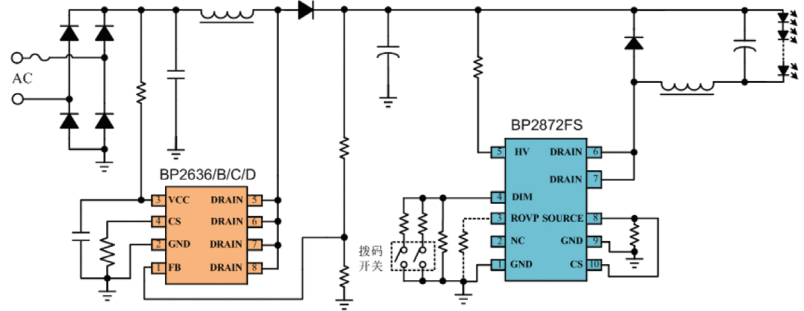
Our TB Tubes are compatible with 277V for industrial and commercial applications



Main Feature

- PF>0.95, THD<10%;
- Output LF current ripple (< 120 Hz):<0.5%;
- Meets EU PST & SVM standard (<1/<0.4);
- Efficiency>91.5%@230Vac, 35W;
- Boost & Buck controller operates in QR mode;
- Support the dip switch to dim the output current;
- Input power in no-load operation<0.45W

SCH



Power	Boost	Buck
<50W @200-264Vac	BP2636X	BP2862FS BP2867FJ
		BP2872FS
<100W @200-264Vac	BP2639A	BP2870AS

Non-dimmable isolated solution

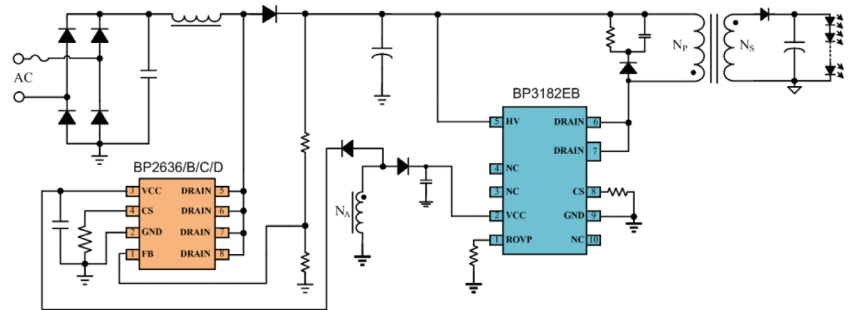
Application: Panel, track lighting



Main Feature

- PF>0.95, THD<10%;
- Output LF current ripple (< 120 Hz):<1%;
- Meets PST & SVM standard (<1/<0.4);
- Efficiency>89%@230Vac, 40W;
- Boost & Flyback controller operates in QR mode;
- More competitive system BOM cost;
- Input power in no-load operation<0.45W

SCH



Power	Boost	Flyback
<50W @200-264Vac	BP2636X	BP3337DB
		BP3182EB
<100W @200-264Vac	BP2639A	BP3189B