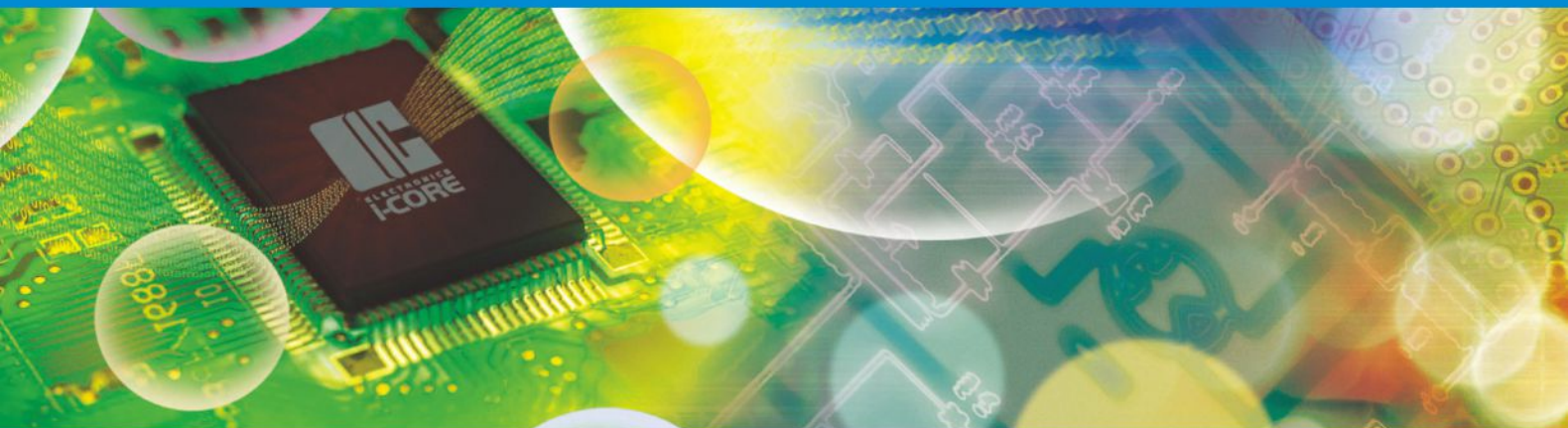


# 产品手册[2023版] PRODUCT MANUALS



无锡中微爱芯电子有限公司  
WUXI I-CORE ELECTRONICS CO.,LTD

序号 NO.	型号 Part Number	名称及主要特点 Function	工作电压 Voltage Range	封装 Package
-----------	-------------------	---------------------	-----------------------	---------------

## 一、显示驱动/Display Driver

### (一) LCD显示/LCD Display

#### 普通笔段型LCD

1	CS1621	32列4行LCD驱动控制电路 32 Seg×4 Com LCD Driver and Controller	2.4~5.5V	SOP16 SOP24 SSOP24 SOP28 QFP44 SSOP48 LQFP48
2	AiP1621A CS1621B	32列4行LCD驱动控制电路 32 Seg×4 Com LCD Driver and Controller	2.4~5.5V	LQFP44
3	CS1622	32列8行LCD驱动控制电路 32 Seg×8 Com LCD Driver and Controller	2.7~5.5V	LQFP44 QFP64 LQFP64 LQFP52 DIE
4	AiP1721	32列4行带键盘输入和背光驱动的LCD驱动控制电路 32 Seg×4 Com LCD Driver with Keyboard Input and Backlight Driver	2.7~5.5V	SSOP48
5	AiP1722	15列4行带背光驱动的LCD驱动控制电路 15 Seg×4 Com LCD Driver with Backlight Driver	2.7~5.5V	SOP24
6	AiP1723	20列4行带键盘输入和背光驱动的LCD驱动控制电路 20 Seg×4 Com LCD Driver with Keyboard Input and Backlight Driver	2.7~5.5V	SOP32
7	AiP1724	16列4行带键盘输入和背光驱动的LCD驱动控制电路 16 Seg×4 Com LCD Driver with Keyboard Input and Backlight Driver	2.7~5.5V	SOP28
8	AiP31621E	32列4行LCD驱动控制电路 32 Seg×4 Com LCD Driver and Controller	2.4~5.5V	DIE
9	AiP31623	48列8行LCD驱动控制电路 48 Seg×8 Com LCD Driver and Controller	2.7~5.5V	DIE QFP100 LQFP100
10	AiP31625	64列8行LCD驱动控制电路 64 Seg×8 Com LCD Driver and Controller	2.7~5.5V	LQFP100 DIE
11	AiP31626	48列16行LCD驱动控制电路 48 Seg×16 Com LCD Driver and Controller	2.7~5.5V	LQFP100 DIE
12	AiP31721	32列4行带键盘输入和背光驱动的VA LCD驱动控制电路 32 Seg×4 Com Driver and Controller for VA LCD with Keyboard Input and Backlight Driver	2.7~5.5V	DIE SSOP48 LQFP48
13	CS75823	52列3行通用LCD驱动控制电路 52 Seg×3 Com General LCD Driver and Controller	4.5~6.0V	DIE LQFP64 QFP64
14	CS75824	51列4行通用LCD驱动控制电路 51 Seg×4 Com General LCD Driver and Controller	3.0~6.0V	DIE QFP64 LQFP64
15	CS75853	40列3行带键盘输入的通用LCD驱动控制电路 40 Seg×3 Com General LCD Driver and Controller with Keyboard Input	4.5~6.0V	DIE LQFP64
<b>低功耗笔段型LCD</b>				
16	AiP16C21	20列4行/16列8行2线通讯LCD驱动控制电路 Ram Mapping 20 Seg×4 Com or 16 Seg×8 Com LCD Driver and Controller with 2-Line Serial Interface	2.4~5.5V	SOP16 SOP20 SOP24 SOP28
17	AiP16C22	44列4行2线通讯LCD驱动控制电路 Ram Mapping 44 Seg×4 Com LCD Driver and Controller with 2-Line Serial Interface	2.4~5.5V	LQFP48 LQFP52
18	AiP16C23	55列4行/51列8行2线通讯LCD驱动控制电路 Ram Mapping 55 Seg×4 Com or 51 Seg×8 Com LCD Driver and Controller with 2-Line Serial Interface	2.4~5.5V	LQFP48 LQFP64
19	AiP31729	52列4行2线通讯LCD驱动控制电路 52 Seg×4 Com LCD Driver and Controller with 2-Line Serial Interface	2.5~5.5V	TSSOP48 SSOP48 LQFP64
20	AiP31241	118段全静态低功耗LCD显示驱动控制电路 118 Seg Driver and Controller for Static and Low Power LCD	2.7~5.5V	DIE LQFP128
21	AiP31620E	36列4行低功耗LCD驱动电路 36 Seg×4 Com Low Power LCD Driver and Controller	2.5~5.5V	SSOP24 QFP48 QFN48 LQFP48

# i-CORE contents

产品目录

序号 NO.	型号 Part Number	名称及主要特点 Function	工作电压 Voltage Range	封装 Package
22	AiP9792	36列4行低功耗LCD驱动电路 36 Seg×4 Com Low Power LCD Driver and Controller	2.5~5.5V	COG TSSOP48 LQFP48
23	AiP97950	35列8行低功耗LCD驱动电路 35 Seg×8 Com Low Power LCD Driver and Controller	2.5~5.5V	TSSOP48
<b>点阵型LCD</b>				
24	AiP31021	96通道点阵LCD列驱动控制电路 96 CH Seg Driver and Controller for Dot Matrix LCD	2.7~5.5V	DIE
25	AiP31063	80通道点阵LCD列驱动控制电路 80 CH Seg Driver and Controller for Dot Matrix LCD	VDD:2.7~5.5V VDD-VEE:3.0~13.0V	DIE QFP100
26	AiP31065	40通道点阵LCD列/行可选驱动控制电路 40 CH Seg/Com Driver and Controller for Dot Matrix LCD	VDD:2.7~5.5V VDD-VEE:3.0~13.0V	DIE QFP64
27	AiP31065L	40通道点阵LCD列/行可选驱动控制电路 40 CH Seg/Com Driver and Controller for Dot Matrix LCD	VDD:2.7~5.5V VDD-VEE:3.0~10.0V	DIE QFP64
28	AiP31086U AiP31086UE	80通道点阵LCD列/行可选驱动控制电路 80 CH Seg/Com Drivers and Controllers for Dot Matrix LCD	VDD:2.7~5.5V VDD-VEE:6.0~28.0V	DIE LQFP100
29	AiP31107 AiP31107E	64通道点阵LCD行驱动控制电路 64 CH Com Drivers and Controllers for Dot Matrix LCD	VDD: 2.7~5.5V VDD-VEE:8.0~17.0V	DIE QFP100
30	AiP31108 AiP31108E AiP31108U	64通道点阵LCD列驱动控制电路 64 CH Seg Drivers and Controllers for Dot Matrix LCD	VDD: 2.7~5.5V VDD-VEE:8.0~17.0V	DIE QFP100
31	AiP31520 AiP31520P	61列16行点阵LCD驱动控制电路 61 Seg×16 Com Drivers and Controllers for Dot Matrix LCD	VDD:2.4~7.0V VDD-VEE:3.5~13.0V	DIE QFP100
32	AiP31020 AiP31020W1 AiP31020W2	带中文字库的点阵LCD驱动控制电路 (简体中文/韩文/繁体中文) Drivers and Controllers for Dot Matrix LCD with Chinese Fonts (Simplified Chinese/ Korean/Traditional Chinese)	2.7~5.5V	DIE
33	AiP31066 AiP31066W1 AiP31066W2 AiP31066W3	40列16行点阵LCD驱动控制电路 (英日/英俄/英欧) 40 Seg×16 Com Drivers and Controllers for Dot Matrix LCD ( English-Japanese/English- European/English-Russian )	VDD:2.7~5.5V VDD-VEE:3.0~13.0V	DIE QFP80
34	AiP31066LC AiP31066L-002 AiP31066L-003	40列16行点阵LCD驱动控制电路 (英日/英俄/英欧) 40 Seg×16 Com Drivers and Controllers for Dot Matrix LCD ( English-Japanese/English- Russian/English-European )	VDD:2.7~5.5V VDD-VEE:3.0~10.0V	DIE QFP80 LQFP80
35	AiP31068 AiP31068-002 AiP31068-003	40列16行带2或3线串行接口的点阵LCD驱动控制电路 (英日/英俄/英欧) 40 Seg×16 Com Drivers and Controllers for Dot Matrix LCD with 2 or 3 Line Serial Data Interface (English-Japanese/English-Russian/English-European)	VDD:2.7~5.5V VDD-VEE:3.0~10.0V	DIE QFP80 LQFP80
36	AiP31070S	80列16行点阵LCD驱动控制电路 (英日) 80 Seg×16 Com Driver and Controller for Dot Matrix LCD ( English-Japanese )	VDD:2.7~5.5V VDD-VEE:3.0~13.0V	DIE
<b>COG型LCD</b>				
37	AiP31032 AiP31032-W1 AiP31032-W2	80列16行带字库点阵LCD驱动控制电路 (英日/英俄/英拉) 80 Seg×16 Com Drivers and Controllers for Dot Matrix LCD with Fonts (English-Japanese/ English-Russian/English-Latin)	VDD:2.7~5.5V VLCD:3.0~7.0V	COG
38	AiP31033E	96列4行点阵LCD驱动控制电路 96 Seg×4 Com Driver and Controller for Dot Matrix LCD	VDDI:1.65~3.4V VDDA:2.5~3.4V	COG
39	AiP31256	256列163行4阶辉度点阵LCD驱动控制电路 256 Seg×163 Com Driver and Controller for 4 Level Gray Scale Dot Matrix LCD	VDDI:1.8~3.3V VDDA:2.8~3.3V	COG
40	AiP31263*	256列81行4阶辉度点阵LCD驱动控制电路 256 Seg×81 Com Driver and Controller for 4 Level Gray Scale Dot Matrix LCD	VDDI:1.8~3.3V VDDA:2.7~3.3V	COG
41	AiP31565CR	132列65行点阵LCD驱动控制电路 132 Seg×65 Com Driver and Controller for Dot Matrix LCD	VDDI:2.4~3.3V VDDA:2.4~3.3V	COG
42	AiP31567 AiP31567A AiP31567S*	132列65行点阵LCD驱动控制电路 132 Seg×65 Com Drivers and Controllers for Dot Matrix LCD	VDDI:1.8~3.3V VDDA:2.4~3.3V	COG

# i-CORE contents

产品目录

序号 NO.	型号 Part Number	名称及主要特点 Function	工作电压 Voltage Range	封装 Package
43	AiP31792	80列16行带字库点阵LCD驱动控制电路 80 Seg×16 Com Driver and Controller for Dot Matrix LCD with Fonts	VDD:2.7~5.5V VLCD:3.0~7.0V	COG
44	AiP31036*	100列16行 / 80列24行带字库点阵LCD驱动控制电路 100 Seg×16 Com / 80 Seg×24 Com Driver and Controller for Dot Matrix LCD with Fonts	VDD:2.7~5.5V VLCD:3.0~7.0V	COG
<b>TFT 显示</b>				
45	AiP31789*	240RGB x 320点262K色单片TFT驱动控制电路 240RGB x 320 dot 262K Color with Frame Memory Single-Chip TFT Driver and Controller	VDDI:1.65V~VDDA VDDA:2.4~3.3V	COG
46	AiP31735*	132RGB x 162点262K色单片TFT驱动控制电路 132RGB x 162 dot 262K Color with Frame Memory Single-Chip TFT Driver and Controller	VDDI:1.65V~VDDA VDDA:2.6~3.3V	COG
<b>LCD 配套</b>				
47	AiP7660	电压反转器电路 Voltage Converter	1.5~10.0V	DIP8 SOP8
<b>(二) LED 面板显示/LED Panel Display</b>				
48	AiP1612	2线串口共阴极10段7位或13段4位/10×2位带键盘扫描/蜂鸣器输出LED驱动控制电路 2-Line Serial Interface, Common Cathode, 10 Seg×7 Grid or 13 Seg×4 Grid LED Driver and Controller with 10×2 Keyboard Input Ports and Buzzer Output	3.0~5.5V	SOP24 SSOP24
49	AiP1616	3线串口共阴极7段4位LED驱动控制专用电路 3-Line Serial Interface, Common Cathode, 7 Seg×4 Grid LED Driver and Controller	3.0~5.5V	DIP16 SOP16
50	AiP1617	3线串口共阴极7段3位或8段2位/6×1位键盘扫描LED驱动控制专用电路 3-Line Serial Interface, Common Cathode, 7 Seg×3 Grid or 8 Seg×2 Grid LED Driver and Controller with 6×1 Keyboard Input Ports	3.0~5.5V	DIP16 SOP16
51	AiP1618	3线串口共阴极5段7位或8段4位/5×1位键盘扫描LED驱动控制专用电路 3-Line Serial Interface, Common Cathode, 5 Seg×7 Grid or 8 Seg×4 Grid LED Driver and Controller with 5×1 Keyboard Input Ports	3.0~5.5V	DIP18 SOP18
52	AiP1620	3线串口共阴极8段6位或10段4位LED驱动控制专用电路 3-Line Serial Interface, Common Cathode, 8 Seg×6 Grid or 10 Seg×4 Grid LED Driver and Controller	3.0~5.5V	SOP20 SSOP20
53	AiP1620B	3线串口共阴极6段7位或9段4位/6×1位键盘扫描LED驱动控制专用电路 3-Line Serial Interface, Common Cathode, 6 Seg×7 Grid or 9 Seg×4 Grid LED Driver and Controller with 6×1 Keyboard Input Ports	3.0~5.5V	SOP20
54	AiP1623 (三线) AiP1623 (四线) CS1623	3线/4线串口共阴极11段7位或14段4位/10×3位键盘扫描LED驱动控制专用电路 3-Line or 4-Line Serial Interface, Common Cathode, 11 Seg×7 Grid or 14 Seg×4 Grid LED Drivers and Controllers with 10×3 Keyboard Input Ports	3.0~5.5V	SOP32 LQFP32
55	AiP1624	3线串口共阴极11段7位或14段4位LED驱动控制专用电路 3-Line Serial Interface, Common Cathode, 11 Seg×7 Grid or 14 Seg×4 Grid LED Driver and Controller	3.0~5.5V	DIP24 SSOP24 SOP24
56	AiP1627	3线串口共阴极10段7位或13段4位/10×2位键盘扫描LED驱动控制专用电路 3-Line Serial Interface, Common Cathode, 10 Seg×7 Grid or 13 Seg×4 Grid LED Driver and Controller with 10×2 Keyboard Input Ports	3.0~5.5V	SOP28
57	AiP1628 CS1628	3线串口共阴极10段7位或13段4位/10×2位键盘扫描LED驱动控制专用电路 3-Line Serial Interface, Common Cathode, 10 Seg×7 Grid or 13 Seg×4 Grid LED Drivers and Controllers with 10×2 Keyboard Input Ports	3.0~5.5V	SOP28 SSOP28
58	AiP1629 (三线) AiP1629 (四线)	3线/4线串口共阴极16段8位/8×4位键盘扫描LED驱动控制专用电路 3-Line or 4-Line Serial Interface, Common Cathode, 16 Seg×8 Grid LED Drivers and Controllers with 8×4 Keyboard Input Ports	3.0~5.5V	QFP44 LQFP44
59	AiP1629A	3线串口共阴极16段8位LED驱动控制专用电路 3-Line Serial Interface, Common Cathode, 16 Seg×8 Grid LED Driver and Controller	3.0~5.5V	SOP32 LQFP32
60	AiP1629B	3线串口共阴极14段8位/8×2位键盘扫描LED驱动控制专用电路 3-Line Serial Interface, Common Cathode, 14 Seg×8 Grid LED Driver and Controller with 8×2 Keyboard Input Ports	3.0~5.5V	SOP32 LQFP32
61	AiP1629C	3线串口共阴极15段8位/8×1位键盘扫描LED驱动控制专用电路 3-Line Serial Interface, Common Cathode, 15 Seg×8 Grid LED Driver and Controller with 8×1 Keyboard Input Ports	3.0~5.5V	SOP32 LQFP32
62	AiP1629D	3线串口共阴极12段8位/8×4位键盘扫描LED驱动控制专用电路 3-Line Serial Interface, Common Cathode, 12 Seg×8 Grid LED Driver and Controller with 8×4 Keyboard Input Ports	3.0~5.5V	SOP32 LQFP32
63	AiP1635 CS1635	2线串口共阳极7段4位/7×1位键盘扫描LED驱动控制专用电路 2-Line Serial Interface, Common Anode, 7 Seg×4 Grid LED Drivers and Controllers with 7×1 Keyboard Input Ports	3.0~5.5V	DIP16 SOP16
64	AiP1636	2线串口共阳极8段4位/8×2位键盘扫描LED驱动控制专用电路 2-Line Serial Interface, Common Anode, 8 Seg×4 Grid LED Driver and Controller with 8×2 Keyboard Scan Ports	3.0~5.5V	DIP18

显示驱动  
Display Driver

MCU  
Microcontroller Unit

逻辑  
Logic

信号链  
Signal Chain

电源  
Power

电机驱动  
Motor Driver

音频  
Audio

遥控器  
Remote Controller

通信  
Communication

配套  
Supporting

序号 NO.	型号 Part Number	名称及主要特点 Function	工作电压 Voltage Range	封装 Package
65	AiP1637	2线串口共阳极8段6位/8×2位键盘扫描LED驱动控制专用电路 2-Line Serial Interface, Common Anode, 8 Seg×6 Grid LED Driver and Controller with 8×2 Keyboard Input Ports	3.0~5.5V	DIP20 SOP20
66	AiP1638 CS1638	3线串口共阴极10段8位/8×3位键盘扫描LED驱动控制专用电路 3-Line Serial Interface, Common Cathode, 10 Seg×8 Grid LED Drivers and Controllers with 8×3 Keyboard Input Ports	3.0~5.5V	SOP28
67	AiP1639	3线串口共阴极8段8位/4×2位键盘扫描LED驱动控制专用电路 3-Line Serial Interface, Common Cathode, 8 Seg×8 Grid LED Driver and Controller with 4×2 Keyboard Input Ports	3.0~5.5V	SKDIP24 SOP24
68	AiP1640	2线串口共阴极8段16位LED驱动控制专用电路 2-Line Serial Interface, Common Cathode, 8 Seg×16 Grid LED Driver and Controller	3.0~5.5V	DIE SSOP28 SOP28
69	AiP1642	2线串口共阴极8段4位LED驱动控制专用电路 2-Line Serial Interface, Common Cathode, 8 Seg×4 Grid LED Driver and Controller	3.0~5.5V	DIP16 SOP16
70	AiP1651	2线串口共阳极7段4位/7×1位键盘扫描LED驱动控制专用电路 2-Line Serial Interface, Common Anode, 7 Seg×4 Grid LED Driver and Controller with 7×1 Keyboard Input Ports	3.0~5.5V	DIP16 SOP16
71	AiP1658	3线串口共阴极9段5位或10段4位/9×1位键盘扫描LED驱动控制专用电路 3-Line Serial Interface, Common Cathode, 9 Seg×5 Grid or 10 Seg×4 Grid LED Driver and Controller with 9×1 Keyboard Input Ports	3.0~5.5V	SOP20
72	AiP1659	3线串口共阴极11段7位或14段4位LED驱动控制专用电路 3-Line Serial Interface, Common Cathode, 11 Seg×7 Grid or 14 Seg×4 Grid LED Driver and Controller	3.0~5.5V	SOP28
73	AiP1668	3线串口共阴极10段7位或13段4位/10×2位键盘扫描LED驱动控制专用电路 3-Line Serial Interface, Common Cathode, 10 Seg×7 Grid or 13 Seg×4 Grid LED Driver and Controller with 10×2 Keyboard Input Ports	3.0~5.5V	SOP24 SSOP24 QFN24
74	AiP6932	3线串口共阴极8段16位LED驱动控制专用电路 3-Line Serial Interface, Common Cathode, 8 Seg×16 Grid LED Driver and Controller	3.0~5.5V	DIE SOP32
75	AiP650	2线串口共阴极8段4位/7×4位带键盘扫描并具有部分组合按键功能LED驱动控制专用电路 2-Line Serial Interface, Common Cathode, 8 Seg×4 Grid LED Driver and Controller with 7×4 Keyboard Input Ports and Partial Combined Keys Function	3.0~5.5V	DIP16 SOP16
76	AiP1944	3线串口共阴极16段16位或24段8位/16×2位键盘扫描LED驱动控制专用电路 3-Line Serial Interface, Common Cathode, 16 Seg×16 Grid or 24 Seg×8 Grid LED Driver and Controller with 16×2 Keyboard Input Ports	3.0~5.5V	LQFP44
77	AiP1948	3线串口共阴极16段16位或24段8位/16×2位键盘扫描LED驱动控制专用电路 3-Line Serial Interface, Common Cathode, 16 Seg×16 Grid or 24 Seg×8 Grid LED Driver and Controller with 16×2 Keyboard Input Ports	3.0~5.5V	SSOP48
78	CS2618	3线串口共阴极10段7位带输出电阻/高抗EFT的/10×2位键盘扫描LED驱动控制专用电路 3-Line Serial Interface, Common Cathode, 10 Seg×7 Grid LED Driver and Controller with Outputs Resistance and High EFT and 10×2 Keyboard Input Ports	3.0~5.5V	SOP28
79	CS2619	3线串口共阴极10段7位带消隐/高抗EFT/10×2位键盘扫描LED驱动控制专用电路 3-Line Serial Interface, Common Cathode, 10 Seg×7 Grid LED Driver and Controller with Ghost Elimination, high EFT and 10×2 Keyboard Input Ports	3.0~5.5V	SOP28
80	AiP1667 <sup>▲</sup>	3线串口共阴极10段7位或13段4位/10×2位键盘扫描LED驱动控制专用电路 3-Line Serial Interface, Common Cathode, 10 Seg×7 Grid or 13 Seg×4 Grid LED Driver and Controller with 10×2 Keyboard Input Ports	3.0~5.5V	SOP28
81	AiP1632C	4线串口共阴极32段8位或24段16位LED驱动控制专用电路 4-Line Serial Interface, Common Cathode, 32 Seg×8 Grid or 24 Seg×16 Grid LED Driver and Controller	2.4~5.5V	LQFP48 LQFP52
<b>(三) LED面板显示—消隐系列/LED Panel Display—Ghost Elimination Series</b>				
82	AiP1916	3线串口共阴极7段4位带消隐LED驱动控制专用电路 3-Line Serial Interface, Common Cathode, 7 Seg×4 Grid LED Driver and Controller with Ghost Elimination	3.0~5.5V	DIP16 SOP16
83	AiP1920	3线串口共阴极8段6位或10段4位带消隐LED驱动控制专用电路 3-Line Serial Interface, Common Cathode, 8 Seg×6 Grid or 10 Seg×4 Grid LED Driver and Controller with Ghost Elimination	3.0~5.5V	SOP20
84	AiP1923	4线串口共阴极11段7位或14段4位带消隐/10×3位键盘扫描LED驱动控制专用电路 4-Line Serial Interface, Common Cathode, 11 Seg×7 Grid or 14 Seg×4 Grid LED Driver and Controller with Ghost Elimination and 10×3 Keyboard Input Ports	3.0~5.5V	SOP32 LQFP32
85	AiP1928	3线串口共阴极10段7位或13段4位带消隐/10×2位键盘扫描LED驱动控制专用电路 3-Line Serial Interface, Common Cathode, 10 Seg×7 Grid or 13 Seg×4 Grid LED Driver and Controller with Ghost Elimination and 10×2 Keyboard Input Ports	3.0~5.5V	SOP28 SSOP28
86	AiP1929	4线串口共阴极16段8位带消隐/8×4位键盘扫描LED驱动控制专用电路 4-Line Serial Interface, Common Cathode, 16 Seg×8 Grid LED Driver and Controller with Ghost Elimination and 8×4 Keyboard Input Ports	3.0~5.5V	LQFP44
87	AiP1929A	3线串口共阴极16段8位带消隐LED驱动控制专用电路 3-Line Serial Interface, Common Cathode, 16 Seg×8 Grid LED Driver and Controller with Ghost Elimination	3.0~5.5V	SOP32 LQFP32
88	AiP1929B	3线串口共阴极14段8位带消隐/8×2位键盘扫描LED驱动控制专用电路 3-Line Serial Interface, Common Cathode, 14 Seg×8 Grid LED Controller/Driver with Ghost Elimination and 8×2 Keyboard Input Ports	3.0~5.5V	SOP32 LQFP32
89	AiP1929C	3线串口共阴极15段8位带消隐/8×1位键盘扫描LED驱动控制专用电路 3-Line Serial Interface, Common Cathode, 15 Seg×8 Grid LED Driver and Controller with Ghost Elimination and 8×1 Keyboard Input Ports	3.0~5.5V	SOP32 LQFP32

# i-CORE contents

产品目录

序号 NO.	型号 Part Number	名称及主要特点 Function	工作电压 Voltage Range	封装 Package
90	AiP1929D	3线串口共阴极12段8位带消隐/8×4位键盘扫描LED驱动控制专用电路 3-Line Serial Interface, Common Cathode, 12 Seg×8 Grid LED Driver and Controller with Ghost Elimination and 8×4 Keyboard Input Ports	3.0~5.5V	SOP32 LQFP32
91	AiP1938	3线串口共阴极10段8位带消隐/8×3位键盘扫描LED驱动控制专用电路 3-Line Serial Interface, Common Cathode, 10 Seg×8 Grid LED Driver and Controller with Ghost Elimination and 8×3 Keyboard Input Ports	3.0~5.5V	SOP28
92	AiP1968	3线串口共阴极10段7位或13段4位带消隐/10×2位键盘扫描LED驱动控制专用电路 3-Line Serial Interface, Common Cathode, 10 Seg×7 Grid or 13 Seg×4 Grid LED Driver and Controller with Ghost Elimination and 10×2 Keyboard Input Ports	3.0~5.5V	SOP24 SSOP24
<b>(四) LED面板显示—恒流系列/LED Panel Display—Constant Current Series</b>				
93	AiP3331	音频调制双矩阵8×9点阵恒流LED驱动控制电路 Audio Modulated, Double Matrix Scan Driver and Controller for 8×9 Dots Matrix LED with Constant Current	2.7~5.5V	QFN28 SSOP28
94	AiP3332	音频调制双矩阵8×9点阵恒流LED驱动控制电路 Audio Modulated, Double Matrix Scan Driver and Controller for 8×9 Dots Matrix LED with Constant Current	2.7~5.5V	QFN40 LQFP48
95	AiP33616	2线串口共阴极8段4位恒流LED驱动控制电路 2-Line Serial Interface, Common Cathode, 8 Seg×4 Grid LED Driver and Controller with Constant Current	4.5~5.5V	SOP16 QFN16 SSOP16
96	AiP33620	2线串口共阴极8段8位恒流LED驱动控制电路 2-Line Serial Interface, Common Cathode, 8 Seg×8 Grid LED Driver and Controller with Constant Current	4.5~5.5V	SOP20 QFN20 SSOP20
97	AiP33624	2线串口共阴极10段8位恒流LED驱动控制电路 2-Line Serial Interface, Common Cathode, 10 Seg×8 Grid LED Driver and Controller with Constant Current	4.5~5.5V	SOP24 QFN24 SSOP24
98	AiP33628	2线串口共阳极16段8位恒流LED驱动控制电路 2-Line Serial Interface, Common Anode, 16 Seg×8 Grid LED Driver and Controller with Constant Current	3.0~5.5V	SOP28 QFN28 SSOP28
99	AiP33632	4线串口可级联共阳极16段8位恒流LED驱动控制电路 4-Line Serial Interface, Common Anode, 16 Seg×8 Grid LED Driver and Controller with Constant Current and Synchronization-Work Function	3.0~5.5V	SOP32 QFN32 LQFP32
100	AiP33648*	2线串口共阴极16段16位恒流LED驱动控制电路 2-Line Serial Interface, Common Cathode, 16 Seg×16 Grid LED Driver and Controller with Constant Current	2.7~5.5V	LQFP48 QFN48 SSOP48
<b>(五) LED显示屏显示/LED Display</b>				
101	AiP3368 AiP3368H	内建双锁存的16路恒流LED驱动控制电路 16-Channel Constant Current LED Driver and Controller with Double Latches	2.7~5.5V	SOP24 SSOP24
102	AiP3358	8路带消隐功能的LED扫描控制电路 8-Channel LED Scanner and Controller with Ghost Elimination	2.7~5.5V	SOP16
103	AiP4953	双P沟道增强型MOSFET Dual P-Channel Enhanced Type MOSFET	30V	SOP8
104	AiP74HC04 AiP74HCT04	6路反相器 Hex Inverter	HC:2.0~6.0V HCT:4.5~5.5V	DIP14 SOP14 TSSOP14
105	AiP74HC14 AiP74HCT14	6路施密特反相器 Hex Inverting Schmitt Trigger	HC:2.0~6.0V HCT:4.5~5.5V	DIP14 SOP14 TSSOP14
106	AiP74HC138 AiP74HCT138	3-8译码器/信号分离器 (反相) 3-to-8 Line Decoder/Demultiplexer; Inverting	HC:2.0~6.0V HCT:4.5~5.5V	DIP16 SOP16 TSSOP16
107	AiP74HC123 AiP74HCT*123	2路带复位的单稳态触发器 Dual Retriggerable Monostable Multivibrator with Reset	HC:2.0~6.0V HCT:4.5~5.5V	DIP16 SOP16 TSSOP16
108	AiP74HC245 AiP74HCT245	带三态控制的8路总线收发器 Octal Bus Transceiver(3-State)	HC:2.0~6.0V HCT:4.5~5.5V	DIP20 SOP20 TSSOP20
109	AiP74HC4051 AiP74VHC4051	八选一模拟开关 8-Channel Analog Multiplexer/Demultiplexer	3.0~9.0V	SOP16 DIP16 TSSOP16 DHVQFN16
110	AiP74HC4067	十六选一模拟开关 16-Channel Analog Multiplexer/Demultiplexer	VDD:3.0~9.0V VDD-VEE:3.0~9.0V	SOP24 TSSOP24
111	AiP74HC4097	2路八选一模拟开关 Dual 8-Channel Analog Multiplexer/Demultiplexer	VDD:3.0~9.0V VDD-VEE:3.0~9.0V	SOP24 TSSOP24

显示驱动  
Display Driver

MCU  
Microcontroller Unit

逻辑  
Logic

信号链  
Signal Chain

电源  
Power

电机驱动  
Motor Driver

音频  
Audio

遥控器  
Remote Controller

通信  
Communication

配套  
Supporting

# i-CORE contents

产品目录

序号 NO.	型号 Part Number	名称及主要特点 Function	工作电压 Voltage Range	封装 Package
<b>(六) OLED显示/OLED Display</b>				
112	AiP3306*	132列64行点阵PMOLED驱动控制电路 132 Seg*64 Com Driver and Controller for Dot Matrix PMOLED	VDDI:1.65V~VDDA VDDA:3.0~4.2V	COG
<b>(七) VFD显示/VFD Display</b>				
113	CS16312	1/4~1/11占空比的VFD驱动控制专用电路 1/4 to 1/11 Duty FIP (VFD) Driver and Controller	VDD:4.5~5.5V VEE:VDD-35.0V	QFP44 LQFP44

# i-CORE contents

产品目录

序号 NO.	型号 Part Number	名称及主要特点 Function	工作电压 Voltage Range	封装 Package
-----------	-------------------	---------------------	-----------------------	---------------

## 二、MCU/Microcontroller Unit

(一) 8-Bit OTP RISC MCU				
1	AiP8P001G	1K OTP ROM的IO口型8位微控制器 1K OTP ROM IO Type 8-Bit MCU	2.3~5.5V	SOT23-6
2	AiP8P002A AiP8P002B AiP8P002H AiP8P002I	1K OTP ROM的IO口型8位微控制器 1K OTP ROM IO Type 8-Bit MCU	2.3~5.5V	SOT23-6 DIP8 SOP8
3	AiP8P003A AiP8P003H AiP8P003I	1K OTP ROM的IO口型8位微控制器 1K OTP ROM IO Type 8-Bit MCU	2.3~5.5V	SOP14 DIP14
4	AiP8P004A	4K OTP ROM的IO口型8位微控制器 4K OTP ROM IO Type 8-Bit MCU	2.3~5.5V	SOP28 SOP32 DIP32
5	AiP8P005A AiP8P005B AiP8P005G	1K OTP ROM的IO口型8位微控制器 1K OTP ROM IO Type 8-Bit MCU	2.3~5.5V	DIP8 DIP14 SOP8 SOP14
6	AiP8P006A	1K OTP ROM的IO口型8位微控制器 1K OTP ROM IO Type 8-Bit MCU	2.3~5.5V	DIP18 SOP18
7	AiP8P007A	6K OTP ROM的IO口型8位微控制器 6K OTP ROM IO Type 8-Bit MCU	2.3~5.5V	SOP28 SKDIP28
8	AiP8P101A AiP8P101B AiP8P101C AiP8P101G	1K OTP ROM的AD型8位微控制器 1K OTP ROM AD Type 8-Bit MCU	2.3~5.5V	DIP8 DIP14 MSOP8 MSOP10 SOP8 SOP14
9	AiP8P102A AiP8P102G	2K OTP ROM的AD型8位微控制器 2K OTP ROM AD Type 8-Bit MCU	2.3~5.5V	DIP20 TSSOP20 SOP20 DIP16 SOP16
10	AiP8P103A	2K OTP ROM的AD型8位微控制器 2K OTP ROM AD Type 8-Bit MCU	2.3~5.5V	SOP14 SOP20 SOP16
11	AiP8P108G	2K OTP ROM的AD型8位微控制器 2K OTP ROM AD Type 8-Bit MCU	2.3~5.5V	MSOP8 MSOP10
12	AiP8P201A	4K OTP ROM的LCD型8位微控制器 4K OTP ROM LCD Type 8-Bit MCU	2.3~5.5V	DIE LQFP64 LQFP64 LQFP44 QFP64
13	AiP8P202A	8K OTP ROM的LCD型8位微控制器 8K OTP ROM LCD Type 8-Bit MCU	2.3~5.5V	DIE LQFP48 LQFP44
14	AiP8P301A	2K OTP ROM的Touch型8位微控制器 2K OTP ROM Touch Type 8-Bit MCU	2.3~5.5V	DIP20 QFN20 SOP20
15	AiP8P501A AiP8P501G	3K OTP ROM的USB型8位微控制器 3K OTP ROM USB Type 8-Bit MCU	4.5~5.5V	DIP20 SOP20
16	AiP8P601A AiP8P601B	1K OTP ROM 带EEPROM的IO型8位微控制器 1K OTP ROM IO Type 8-Bit MCU with EEPROM	2.3~5.5V	SOP8
17	AiP8P602A	1K OTP ROM 带EEPROM的IO型8位微控制器 1K OTP ROM IO Type 8-Bit MCU with EEPROM	2.3~5.5V	SOP8
(二) 8-Bit MTP RISC MCU				
18	AiP8M101G	1K MTP ROM的AD型8位微控制器 1K MTP ROM AD Type 8-Bit MCU	2.3~5.5V	DIP8 DIP14 MSOP8 SOP16 SOP8 SOP14 MSOP10

显示驱动  
Display Driver

MCU  
Microcontroller Unit

逻辑  
Logic

信号链  
Signal Chain

电源  
Power

电机驱动  
Motor Driver

音频  
Audio

遥控器  
Remote Controller

通信  
Communication

配套  
Supporting



# i-CORE contents

产品目录

序号 NO.	型号 Part Number	名称及主要特点 Function	工作电压 Voltage Range	封装 Package
19	AiP8M102G	2K MTP ROM的AD型8位微控制器 2K MTP ROM AD Type 8-Bit MCU	2.3~5.5V	DIP16 SOP16 DIP20 SOP20 TSSOP20 QFN20 MSOP10
20	AiP8M103G	2K MTP ROM的AD型8位微控制器 2K MTP ROM AD Type 8-Bit MCU	2.3~5.5V	SOP8 MSOP10 SOP14 SOP16 SOP20 QFN20
<b>(三) 8-Bit Flash RISC MCU</b>				
21	AiP8F101G*	1K Flash ROM的AD型8位微控制器 1K Flash ROM AD Type 8-Bit MCU	2.3~5.5V	DIP8 SOP8 DIP14 SOP14 MSOP8 MSOP10
22	AiP8F102G	2K Flash ROM的AD型8位微控制器 2K Flash ROM AD Type 8-Bit MCU	2.3~5.5V	DIP16 SOP16 DIP20 SOP20 TSSOP20
<b>(四) 9P系列8-Bit RISC MCU</b>				
23	AiP9P051*	1K OTP ROM的IO口型8位微控制器 1K OTP ROM IO Type 8-Bit MCU	2.0~5.5V	SOP16 DIP16 SOP14 DIP14 MSOP10 DIP8 SOP8
24	AiP9P052*	2K OTP ROM的IO口型8位微控制器 2K OTP ROM IO Type 8-Bit MCU	2.0~5.5V	SOP20 DIP20 SOP16 DIP16 SOP14 DIP14
25	AiP9P151*	1K OTP ROM的AD型8位微控制器 1K OTP ROM AD Type 8-Bit MCU	2.0~5.5V	SOP16 DIP16 SOP14 DIP14 SOP8 DIP8 MSOP10
26	AiP9P152	2K OTP ROM的AD型8位微控制器 2K OTP ROM AD Type 8-Bit MCU	2.0~5.5V	SOP20 DIP20 SOP16 DIP16 SOP14 DIP14
27	AiP9P351	2K OTP ROM的触摸型8位微控制器 2K OTP ROM Touch Type 8-Bit MCU	2.0~5.5V	SOT23-6 SOP8 DIP8
28	AiP9P352	4K OTP ROM的触摸型8位微控制器 4K OTP ROM Touch Type 8-Bit MCU	2.0~5.5V	SOP20 DIP20 SOP16 DIP16
29	AiP9M251	1K MTP ROM的LCD型8位微控制器 1K MTP ROM LCD Type 8-Bit MCU	1.8~3.6V	SOP20 TSSOP20 SOP28 SSOP28
30	AiP9M252	2K MTP ROM的LCD型8位微控制器 2K MTP ROM LCD Type 8-Bit MCU	1.8~3.6V	LQFP44 LQFP48
31	AiP9M253	4K MTP ROM的LCD型8位微控制器 4K MTP ROM LCD Type 8-Bit MCU	1.8~3.6V	LQFP44 LQFP48 LQFP64
32	AiP9M251L	1K MTP ROM的LCD型8位微控制器 1K MTP ROM LCD Type 8-Bit MCU	1.3~1.8V	SOP20 TSSOP20 SOP28 SSOP28
33	AiP9M252L	2K MTP ROM的LCD型8位微控制器 2K MTP ROM LCD Type 8-Bit MCU	1.3~1.8V	LQFP44 LQFP48
34	AiP9M253L	4K MTP ROM的LCD型8位微控制器 4K MTP ROM LCD Type 8-Bit MCU	1.3~1.8V	LQFP44 LQFP48 LQFP64
35	AiP9P262L	4K OTP ROM的LCD型8位微控制器 4K OTP ROM LCD Type 8-Bit MCU	1.3~1.8V	SSOP28
36	AiP9P263L	4K OTP ROM的LCD型8位微控制器 4K OTP ROM LCD Type 8-Bit MCU	1.3~1.8V	LQFP48

# i-CORE contents

产品目录

序号 NO.	型号 Part Number	名称及主要特点 Function	工作电压 Voltage Range	封装 Package
<b>(五) 8-Bit Flash MCU</b>				
37	AiP8F1016 AiP8F1032	16KB/32KB Flash ROM的AD型8051核微控制器 16KB/32KB Flash ROM AD Type MCU with 8051 Core	1.8~5.5V	SOP20 TSSOP20 QFN24 SOP28 SOP32 QFN32
38	AiP8F2032	32KB Flash ROM的LCD型8051核微控制器 32KB Flash ROM LCD Type MCU with 8051 Core	1.8~5.5V	SOP28 SOP32 QFN32 QFP44 LQFP48 SSOP48
39	AiP8F3264	64KB Flash ROM的触摸型8051核微控制器 64KB Flash ROM Touch Type MCU with 8051 Core	1.8~5.5V	LQFP48 SOP28 LQFP44
40	AiP8F3216 AiP8F3216E	16KB Flash ROM的触摸型8051核微控制器 16KB Flash ROM Touch Type MCU with 8051 Core	1.8~5.5V	SOP28 SOP20 SSOP20 SSOP28
41	AiP8F3208	8KB Flash ROM的触摸型8051核微控制器 8KB Flash ROM Touch Type MCU with 8051 Core	1.8~5.5V	SOP20 SSOP20 SOP16
42	AiP8F3532	32KB Flash ROM的无电容触摸型8051核微控制器 32KB Flash ROM Capless Touch Type MCU with 8051 core	1.8~5.5V	SOP32 SOP28
43	AiP8F3516	16KB Flash ROM的无电容触摸型8051核微控制器 16KB Flash ROM Capless Touch Type MCU with 8051 core	1.8~5.5V	SOP28 SOP20 TSSOP20
44	AiP8F3508*	8KB Flash ROM的无电容触摸型8051核微控制器 8KB Flash ROM Capless Touch Type MCU with 8051 core	1.8~5.5V	SOP20 TSSOP20 SOP16 SOP14
45	AiP8F7232	64MHz 32KB Flash ROM的增强型8051核微控制器 64MHz 32KB Flash ROM Enhanced Type MCU with 8051 Core	2.4~5.5V	LQFP44 LQFP48 SSOP28
46	AiP8F7232S	16MHz 32KB Flash ROM的增强型8051核微控制器 16MHz 32KB Flash ROM Enhanced Type MCU with 8051 Core	2.4~5.5V	SSOP28
47	AiP8F7201	集成驱动的64MHz 32KB Flash ROM的增强型8051核微控制器 64MHz 32KB Flash ROM Enhanced Type MCU with 8051 Core	2.4~5.5V	QFN40
48	AiP8F7201S	集成驱动的16MHz 32KB Flash ROM的增强型8051核微控制器 16MHz 32KB Flash ROM Enhanced Type MCU with 8051 Core	2.4~5.5V	QFN40
49	AiP8F7364*	96MHz 64KB Flash ROM的增强型8051核微控制器 96MHz 64KB Flash ROM Enhanced Type MCU with 8051 Core	2.4~5.5V	LQFP44 LQFP48 SSOP48
<b>(六) 32-Bit ARM MCU</b>				
50	CKS32F030F4	16KB M0核微控制器 16KB M0 MCU	2.4~3.6V	TSSOP20
51	CKS32F030K6 CKS32F030C6	32KB M0核微控制器 32KB M0 MCU	2.4~3.6V	LQFP32 LQFP48
52	CKS32F030C8	64KB M0核微控制器 64KB M0 MCU	2.4~3.6V	LQFP48
53	CKS32F031C6	32KB M0核微控制器 32KB M0 MCU	2.0~3.6V	LQFP48
54	CKS32F051K6 CKS32F051C6 CKS32F051R6	32KB M0核微控制器 32KB M0 MCU	2.0~3.6V	LQFP32 LQFP48 LQFP64
55	CKS32F051K8 CKS32F051C8	64KB M0核微控制器 64KB M0 MCU	2.0~3.6V	LQFP32 LQFP48
56	CKS32F103C8 CKS32F103R8	64KB M3核微控制器 64KB M3 MCU	2.0~3.6V	LQFP48 LQFP64
57	CKS32F103CB CKS32F103RB CKS32F103VB	128KB M3核微控制器 128KB M3 MCU	2.0~3.6V	LQFP48 LQFP64 LQFP100
58	AiP32L1032 AiP32L1064	32KB/64KB M0核微控制器 32KB/64KB M0 MCU	2.4~5.5V	TSSOP20 QFN20
<b>(七) 32-Bit RISC-V MCU</b>				
59	AiP32RV1564*	64KB RISC-V核微控制器 64KB RISC-V MCU	2.4~3.6V	LQFP48 LQFP64 LQFP100

显示驱动  
Display Driver

MCU  
Microcontroller Unit

逻辑  
Logic

信号链  
Signal Chain

电源  
Power

电机驱动  
Motor Driver

音频  
Audio

遥控器  
Remote Controller

通信  
Communication

配套  
Supporting

# i-CORE contents

产品目录

序号 NO.	型号 Part Number	名称及主要特点 Function	工作电压 Voltage Range	封装 Package
60	AiP32RV15A8*	128KB RISC-V核微控制器 128KB RISC-V MCU	2.4~3.6V	LQFP48 LQFP64 LQFP100
61	AiP32RV40B6*	256KB RISC-V核微控制器 256KB RISC-V MCU	2.4~3.6V	LQFP48 LQFP64 LQFP100
62	AiP32RV40D2*	512KB RISC-V核微控制器 512KB RISC-V MCU	2.4~3.6V	LQFP48 LQFP64 LQFP100
63	AiP32RV7064* AiP32RV70A8*	64KB/128KB RISC-V核微控制器 64KB/128KB RISC-V MCU	2.4~3.6V	LQFP44 LQFP48 LQFP64
<b>(八) 32-Bit 语音IC</b>				
64	AiP32RV500	RISC-V 核语音识别IC RISC-V Speech Recognition IC	1.8~3.6V	LQFP48
65	AiP32RV501	RISC-V 核语音识别IC RISC-V Speech Recognition IC	1.8~3.6V	LQFP48 QFN40

# i-CORE contents

产品目录

序号 NO.	型号 Part Number	名称及主要特点 Function	工作电压 Voltage Range	封装 Package
-----------	-------------------	---------------------	-----------------------	---------------

## 三、逻辑/Logic

### (一) HC/HCT系列/HC/HCT Series

1	AiP74HC00 AiP74HCT00	4路2输入与非门 Quad 2-input Nand Gate	HC:2.0~6.0V HCT:4.5~5.5V	DIP14 SOP14 TSSOP14
2	AiP74HC02 AiP74HCT02 <sup>▲</sup>	4路2输入或非门 Quad 2-input Nor Gate	HC:2.0~6.0V HCT:4.5~5.5V	DIP14 SOP14 TSSOP14
3	AiP74HC03 AiP74HCT03 <sup>▲</sup>	4路2输入与非门(开漏) Quad 2-input Nand Gate with Open-drain Outputs	HC:2.0~6.0V HCT:4.5~5.5V	DIP14 SOP14 TSSOP14
4	AiP74HC04 AiP74HCT04	6路反相器 Hex Inverter	HC:2.0~6.0V HCT:4.5~5.5V	DIP14 SOP14 TSSOP14
5	AiP74HC05 AiP74HCT05 <sup>▲</sup>	6路反相器(开漏) Hex Inverter with Open-drain Outputs	HC:2.0~6.0V HCT:4.5~5.5V	DIP14 SOP14 TSSOP14
6	AiP74HC06	6路反相器(开漏) Hex Inverter with Open-drain Outputs	2.0~6.0V	DIP14 SOP14 TSSOP14
7	AiP74HC07	6路缓冲器(开漏) Hex Buffer with Open-drain Outputs	2.0~6.0V	DIP14 SOP14 TSSOP14
8	AiP74HC08 AiP74HCT08	4路2输入与门 Quad 2-input And Gate	HC:2.0~6.0V HCT:4.5~5.5V	DIP14 SOP14 TSSOP14
9	AiP74HC10 AiP74HCT10 <sup>▲</sup>	3路3输入与非门 Triple 3-input Nand Gate	HC:2.0~6.0V HCT:4.5~5.5V	DIP14 SOP14 TSSOP14
10	AiP74HC11 AiP74HCT11 <sup>▲</sup>	3路3输入与门 Triple 3-input And Gate	HC:2.0~6.0V HCT:4.5~5.5V	DIP14 SOP14 TSSOP14
11	AiP74HC14 AiP74HCT14	6路施密特反相器 Hex Inverting Schmitt Trigger	HC:2.0~6.0V HCT:4.5~5.5V	DIP14 SOP14 TSSOP14
12	AiP74HC20 AiP74HCT20 <sup>▲</sup>	2路4输入与非门 Dual 4-input Nand Gate	HC:2.0~6.0V HCT:4.5~5.5V	DIP14 SOP14 TSSOP14
13	AiP74HC21 AiP74HCT21 <sup>▲</sup>	2路4输入与门 Dual 4-input And Gate	HC:2.0~6.0V HCT:4.5~5.5V	DIP14 SOP14 TSSOP14
14	AiP74HC27 AiP74HCT27 <sup>▲</sup>	3路3输入或非门 Triple 3-input Nor Gate	HC:2.0~6.0V HCT:4.5~5.5V	DIP14 SOP14 TSSOP14
15	AiP74HC30 <sup>▲</sup> AiP74HCT30 <sup>▲</sup>	8输入与非门 8-input Nand Gate	HC:2.0~6.0V HCT:4.5~5.5V	DIP14 SOP14 TSSOP14
16	AiP74HC32 AiP74HCT32	4路2输入或门 Quad 2-input Or Gate	HC:2.0~6.0V HCT:4.5~5.5V	DIP14 SOP14 TSSOP14
17	AiP74HC42 <sup>▲</sup> AiP74HCT42 <sup>▲</sup>	BCD转10进制译码电路 BCD to Decimal Decoder (1-of-10)	HC:2.0~6.0V HCT:4.5~5.5V	DIP16 SOP16 TSSOP16
18	AiP74HC47 <sup>▲</sup>	BCD转7段共阳极LED驱动电路 BCD-to-Seven-Segment Common Anode LED Decodes/Drivers	2.0~6.0V	DIP16 SOP16 TSSOP16
19	AiP74HC48 <sup>▲</sup>	BCD转7段共阴极LED驱动电路 BCD-to-Seven-Segment Common Cathode LED Decodes/Drivers	2.0~6.0V	DIP16 SOP16 TSSOP16
20	AiP74HC58 <sup>▲</sup> AiP74HCT58 <sup>▲</sup>	2路与或门 Dual And-or Gate	HC:2.0~6.0V HCT:4.5~5.5V	DIP14 SOP14 TSSOP14
21	AiP74HC74	2路带置位/复位的上升沿触发D型触发器 Dual D-type Flip-flop with Set and Reset, Positive-edge Trigger	2.0~6.0V	DIP14 SOP14 TSSOP14
22	AiP74HC85 AiP74HCT85 <sup>▲</sup>	4位数据比较器 4-bit Magnitude Comparator	HC:2.0~6.0V HCT:4.5~5.5V	DIP16 SOP16 TSSOP16
23	AiP74HC86 AiP74HCT86	4路2输入异或门 Quad 2-input Exclusive-or Gate	HC:2.0~6.0V HCT:4.5~5.5V	DIP14 SOP14 TSSOP14
24	AiP74HC90 <sup>▲</sup> AiP74HCT90 <sup>▲</sup>	十进制计数器 Decade Counters	HC:2.0~6.0V HCT:4.5~5.5V	DIP14 SOP14 TSSOP14

显示驱动  
Display Driver

MCU  
Microcontroller Unit

逻辑  
Logic

信号链  
Signal Chain

电源  
Power

电机驱动  
Motor Driver

音响  
Audio

遥控器  
Remote Controller

通信  
Communication

配套  
Supporting

序号 NO.	型号 Part Number	名称及主要特点 Function	工作电压 Voltage Range	封装 Package
25	AiP74HC123 AiP74HCT123 <sup>▲</sup>	2路带复位的单稳态触发器 Dual Retriggerable Monostable Multivibrator with Reset	HC:2.0~6.0V HCT:4.5~5.5V	DIP16 SOP16 TSSOP16
26	AiP74HC125 AiP74HCT125	带三态控制的4路缓冲器/线驱动器 Quad Buffer/Line Driver;3-state	HC:2.0~6.0V HCT:4.5~5.5V	DIP14 SOP14 TSSOP14
27	AiP74HC126 AiP74HCT126	带三态控制的4路缓冲器/线驱动器 Quad Buffer/Line Driver;3-state	HC:2.0~6.0V HCT:4.5~5.5V	DIP14 SOP14 TSSOP14
28	AiP74HC132 AiP74HCT132	4路2输入施密特与非门 Quad 2-input Nand Schmitt Trigger	HC:2.0~6.0V HCT:4.5~5.5V	DIP14 SOP14 TSSOP14
29	AiP74HC137 <sup>▲</sup> AiP74HCT137 <sup>▲</sup>	带地址锁存的3-8译码器/信号分离器 (反相) 3-to-8 Line Decoder/Demultiplexer with Address latches,Inverting	HC:2.0~6.0V HCT:4.5~5.5V	DIP16 SOP16 TSSOP16
30	AiP74HC138 AiP74HCT138	3-8译码器/信号分离器 (反相) 3-to-8 Line Decoder/Demultiplexer,Inverting	HC:2.0~6.0V HCT:4.5~5.5V	DIP16 SOP16 TSSOP16
31	AiP74HC139 AiP74HCT139	2路2-4译码器/信号分离器 Dual 2-to-4 Line Decoder/Demultiplexer	HC:2.0~6.0V HCT:4.5~5.5V	DIP16 SOP16 TSSOP16
32	AiP74HC145 <sup>▲</sup> AiP74HCT145	BCD转10进制译码电路 BCD-to-Decimal Decoders/Drivers	HC:2.0~6.0V HCT:4.5~5.5V	DIP16 SOP16 TSSOP16
33	AiP74HC147 <sup>▲</sup> AiP74HCT147 <sup>▲</sup>	10-4线优先编码器 10-to-4 Line Priority Encoder	HC:2.0~6.0V HCT:4.5~5.5V	DIP16 SOP16 TSSOP16
34	AiP74HC148 AiP74HCT148 <sup>▲</sup>	8-3线优先编码器 8-to-3 Line Priority Encoder	HC:2.0~6.0V HCT:4.5~5.5V	DIP16 SOP16 TSSOP16
35	AiP74HC151 AiP74HCT151 <sup>▲</sup>	8输入多路复用器 8-input Multiplexer	HC:2.0~6.0V HCT:4.5~5.5V	DIP16 SOP16 TSSOP16
36	AiP74HC153 AiP74HCT153 <sup>▲</sup>	2路4输入多路复用器 Dual 4-input Multiplexer	HC:2.0~6.0V HCT:4.5~5.5V	DIP16 SOP16 TSSOP16
37	AiP74HC157 AiP74HCT157 <sup>▲</sup>	4路2输入多路复用器 Quad 2-input Multiplexer	HC:2.0~6.0V HCT:4.5~5.5V	DIP16 SOP16 TSSOP16
38	AiP74HC158 <sup>▲</sup> AiP74HCT158 <sup>▲</sup>	4路2输入多路复用器 (反相) Quad 2-input Multiplexer,Inverting	HC:2.0~6.0V HCT:4.5~5.5V	DIP16 SOP16 TSSOP16
39	AiP74HC160 AiP74HCT160 <sup>▲</sup>	同步置数/异步复位同步BCD计数器 Presettable Synchronous BCD Decade Counter,Asynchronous Reset	HC:2.0~6.0V HCT:4.5~5.5V	DIP16 SOP16 TSSOP16
40	AiP74HC161 AiP74HCT161 <sup>▲</sup>	同步置数/异步复位同步4位二进制计数器 Presettable Synchronous 4-bit Binary Counter,Asynchronous Reset	HC:2.0~6.0V HCT:4.5~5.5V	DIP16 SOP16 TSSOP16
41	AiP74HC162 <sup>▲</sup> AiP74HCT162 <sup>▲</sup>	同步置数/同步复位同步BCD计数器 Presettable Synchronous BCD Decade Counter,Synchronous Reset	HC:2.0~6.0V HCT:4.5~5.5V	DIP16 SOP16 TSSOP16
42	AiP74HC163 AiP74HCT163 <sup>▲</sup>	同步置数/同步复位同步4位二进制计数器 Presettable Synchronous 4-bit Binary Counter,Synchronous Reset	HC:2.0~6.0V HCT:4.5~5.5V	DIP16 SOP16 TSSOP16
43	AiP74HC164	8位串入并出移位寄存器 8-bit Serial-in,Parallel-out Shift Register	2.0~6.0V	DIP14 SOP14 TSSOP14
44	AiP74HC165 AiP74HCT165	8位并入串出移位寄存器 8-bit Parallel-in,Serial out Shift Register	HC:2.0~6.0V HCT:4.5~5.5V	DIP16 SOP16 TSSOP16
45	AiP74HC173 AiP74HCT173 <sup>▲</sup>	4路带三态控制的的上升沿触发D型触发器 Quad D-type Flip-flop;Positive-edge trigger;3-state	HC:2.0~6.0V HCT:4.5~5.5V	DIP16 SOP16 TSSOP16
46	AiP74HC175 AiP74HCT175 <sup>▲</sup>	4路带复位功能的上升沿触发D型触发器 Quad D-type Flip-flop with Reset; Positive-edge Trigger	HC:2.0~6.0V HCT:4.5~5.5V	DIP16 SOP16 TSSOP16
47	AiP74HC190 AiP74HCT190 <sup>▲</sup>	异步置数BCD加减计数器 Presettable Synchronous BCD Decade Up/Down Counter	HC:2.0~6.0V HCT:4.5~5.5V	DIP16 SOP16 TSSOP16
48	AiP74HC191 AiP74HCT191 <sup>▲</sup>	异步置数4位同步二进制加减计数器 Presettable Synchronous 4-bit Binary Up/Down Counter	HC:2.0~6.0V HCT:4.5~5.5V	DIP16 SOP16 TSSOP16
49	AiP74HC192 AiP74HCT192 <sup>▲</sup>	异步置数/异步复位同步BCD加减计数器 Presettable Synchronous BCD Decade Up/Down Counter,Asynchronous Reset	HC:2.0~6.0V HCT:4.5~5.5V	DIP16 SOP16 TSSOP16
50	AiP74HC193 AiP74HCT193 <sup>▲</sup>	异步置数/异步复位同步4位二进制加减计数器 Presettable Synchronous 4-bit Binary Up/Down Counter,Asynchronous Reset	HC:2.0~6.0V HCT:4.5~5.5V	DIP16 SOP16 TSSOP16

# i-CORE contents

产品目录

序号 NO.	型号 Part Number	名称及主要特点 Function	工作电压 Voltage Range	封装 Package
51	AiP74HC196 AiP74HCT196 <sup>▲</sup>	异步置数十进制计数器 Presettable Decade Counter	HC:2.0~6.0V HCT:4.5~5.5V	DIP14 SOP14 TSSOP14
52	AiP74HC237 AiP74HCT237 <sup>▲</sup>	带地址锁存的3-8译码器/信号分离器 3-to-8 Line Decoder/Demultiplexer with Address Latches	HC:2.0~6.0V HCT:4.5~5.5V	DIP16 SOP16 TSSOP16
53	AiP74HC238 AiP74HCT238 <sup>▲</sup>	3-8译码器/信号分离器 3-to-8 Line Decoder/Demultiplexer	HC:2.0~6.0V HCT:4.5~5.5V	DIP16 SOP16 TSSOP16
54	AiP74HC240 AiP74HCT240 <sup>▲</sup>	带三态控制反向输出的8路缓冲器/线驱动器 Octal Buffer/Line Driver,3-state,Inverting	HC:2.0~6.0V HCT:4.5~5.5V	DIP20 SOP20 TSSOP20
55	AiP74HC241 AiP74HCT241	带三态控制的8路缓冲器/线驱动器 Octal Buffer/Line Driver,3-state	HC:2.0~6.0V HCT:4.5~5.5V	DIP20 SOP20 TSSOP20
56	AiP74HC243 <sup>▲</sup> AiP74HCT243	带三态控制的4路总线收发器 Quad Bus Transceiver,3-state	HC:2.0~6.0V HCT:4.5~5.5V	DIP14 SOP14 TSSOP14
57	AiP74HC244 AiP74HCT244	带三态控制的8路缓冲器/线驱动器 Octal Buffer/Line Driver,3-state	HC:2.0~6.0V HCT:4.5~5.5V	DIP20 SOP20 TSSOP20
58	AiP74HC245 AiP74HCT245	带三态控制的8路总线收发器 Octal Bus Transceiver,3-state	HC:2.0~6.0V HCT:4.5~5.5V	DIP20 SOP20 TSSOP20
59	AiP74HC247 <sup>▲</sup> AiP74HCT247 <sup>▲</sup>	BCD转7段译码管 BCD-to-Seven-Segment Decodes Drivers	HC:2.0~6.0V HCT:4.5~5.5V	DIP16 SOP16 TSSOP16
60	AiP74HC251 AiP74HCT251 <sup>▲</sup>	带三态控制的8输入多路复用器 8-input Multiplexer,3-state	HC:2.0~6.0V HCT:4.5~5.5V	DIP16 SOP16 TSSOP16
61	AiP74HC253 <sup>▲</sup> AiP74HCT253 <sup>▲</sup>	带三态控制的2路4输入多路复用器 Dual 4-input Multiplexer,3-state	HC:2.0~6.0V HCT:4.5~5.5V	DIP16 SOP16 TSSOP16
62	AiP74HC257 <sup>▲</sup> AiP74HCT257 <sup>▲</sup>	带三态控制的4路2输入多路复用器 Quad 2-input Multiplexer,3-state	HC:2.0~6.0V HCT:4.5~5.5V	DIP16 SOP16 TSSOP16
63	AiP74HC258 <sup>▲</sup> AiP74HCT258 <sup>▲</sup>	带三态控制的4路2输入多路复用器 (反相) Quad 2-input Multiplexer,3-state,Inverting	HC:2.0~6.0V HCT:4.5~5.5V	DIP16 SOP16 TSSOP16
64	AiP74HC259 AiP74HCT259 <sup>▲</sup>	8位可寻址锁存器 8-bit Addressable Latch	HC:2.0~6.0V HCT:4.5~5.5V	DIP16 SOP16 TSSOP16
65	AiP74HC273 AiP74HCT273 <sup>▲</sup>	带复位的8位上升沿触发D型触发器 Octal D-type Flip-flop with Reset,Positive-edge Trigger	HC:2.0~6.0V HCT:4.5~5.5V	DIP20 SOP20 TSSOP20
66	AiP74HC280 <sup>▲</sup> AiP74HCT280 <sup>▲</sup>	9位奇偶检验器 9-bit Odd/Even Parity Generator/Checker	HC:2.0~6.0V HCT:4.5~5.5V	DIP14 SOP14 TSSOP14
67	AiP74HC283 <sup>▲</sup> AiP74HCT283 <sup>▲</sup>	4位二进制带进位的全加器 4-bit Binary Full Adder with Fast Carry	HC:2.0~6.0V HCT:4.5~5.5V	DIP16 SOP16 TSSOP16
68	AiP74HC365 AiP74HCT365 <sup>▲</sup>	带三态控制的6路缓冲器/线驱动器 Hex Buffer/Line Driver,3-state	HC:2.0~6.0V HCT:4.5~5.5V	DIP16 SOP16 TSSOP16
69	AiP74HC366 AiP74HCT366 <sup>▲</sup>	带三态控制输出的6路缓冲器/线驱动器 (反相) Hex Buffer/Line Driver,3-state,Inverting	HC:2.0~6.0V HCT:4.5~5.5V	DIP16 SOP16 TSSOP16
70	AiP74HC367 <sup>▲</sup> AiP74HCT367 <sup>▲</sup>	带三态控制的6路缓冲器/线驱动器 Hex Buffer/Line Driver,3-state	HC:2.0~6.0V HCT:4.5~5.5V	DIP16 SOP16 TSSOP16
71	AiP74HC368 <sup>▲</sup> AiP74HCT368 <sup>▲</sup>	带三态控制输出的6路缓冲器/线驱动器 (反相) Hex Buffer/Line Driver,3-state,Inverting	HC:2.0~6.0V HCT:4.5~5.5V	DIP16 SOP16 TSSOP16
72	AiP74HC373 AiP74HCT373	带三态控制的8位D型锁存器 Octal D-type Transparent Latch,3-state	HC:2.0~6.0V HCT:4.5~5.5V	DIP20 SOP20 TSSOP20
73	AiP74HC374 AiP74HCT374 <sup>▲</sup>	带三态控制的8位上升沿触发D型触发器 Octal D-type flip-flop,positive edge-trigger,3-state	HC:2.0~6.0V HCT:4.5~5.5V	DIP20 SOP20 TSSOP20
74	AiP74HC390 AiP74HCT390 <sup>▲</sup>	2路十进制计数器 Dual Decade Ripple Counter	HC:2.0~6.0V HCT:4.5~5.5V	DIP16 SOP16 TSSOP16
75	AiP74HC393 <sup>▲</sup> AiP74HCT393 <sup>▲</sup>	2路4位二进制计数器 Dual 4-bit Binary Ripple Counter	HC:2.0~6.0V HCT:4.5~5.5V	DIP14 SOP14 TSSOP14

显示驱动  
Display Driver

MCU  
Microcontroller Unit

逻辑  
Logic

信号链  
Signal Chain

电源  
Power

电机驱动  
Motor Driver

音响  
Audio

遥控器  
Remote Controller

通信  
Communication

配套  
Supporting

序号 NO.	型号 Part Number	名称及主要特点 Function	工作电压 Voltage Range	封装 Package
76	AiP74HC534 <sup>▲</sup> AiP74HCT534 <sup>▲</sup>	带三态控制的8位上升沿触发D型触发器 (反相) Octal D-type flip-flop;Positive Edge-trigger;3-state;Inverting	HC:2.0~6.0V HCT:4.5~5.5V	DIP20 SOP20 TSSOP20
77	AiP74HC540 AiP74HCT540 <sup>▲</sup>	带三态控制输出的8路缓冲器/线驱动器 (反相) Octal Buffer/Line Driver;3-state;Inverting	HC:2.0~6.0V HCT:4.5~5.5V	DIP20 SOP20 TSSOP20
78	AiP74HC541 AiP74HCT541	带三态控制的8路缓冲器/线驱动器 Octal Buffer/Line Driver;3-state	HC:2.0~6.0V HCT:4.5~5.5V	DIP20 SOP20 TSSOP20
79	AiP74HC563 AiP74HCT563 <sup>▲</sup>	带三态控制的8位D型锁存器 (反相) Octal D-type Transparent Latch;3-state;Inverting	HC:2.0~6.0V HCT:4.5~5.5V	DIP20 SOP20 TSSOP20
80	AiP74HC564 <sup>▲</sup> AiP74HCT564 <sup>▲</sup>	带三态控制的8位上升沿触发D型触发器 (反相) Octal D-type Flip-flop;Positive Edge-trigger;3-state;Inverting	HC:2.0~6.0V HCT:4.5~5.5V	DIP20 SOP20 TSSOP20
81	AiP74HC573 AiP74HCT573	带三态控制的8位D型锁存器 Octal D-type Transparent Latch;3-state	HC:2.0~6.0V HCT:4.5~5.5V	DIP20 SOP20 TSSOP20
82	AiP74HC574 AiP74HCT574 <sup>▲</sup>	带三态控制的8位上升沿触发D型触发器 Octal D-type flip-flop;positive edge-trigger;3-state	HC:2.0~6.0V HCT:4.5~5.5V	DIP20 SOP20 TSSOP20
83	AiP74HC589 AiP74HCT589 <sup>▲</sup>	8位带三态控制的串入或并入/串出移位寄存器 8-bit Serial or Parallel-Input/Serial-Output Shift Register;3-state	HC:2.0~6.0V HCT:4.5~5.5V	DIP16 SOP16 TSSOP16
84	AiP74HC590 <sup>▲</sup> AiP74HCT590 <sup>▲</sup>	带三态控制和输出储存功能的8位二进制计数器 8-bit Binary Counter with Output Register;3-state	HC:2.0~6.0V HCT:4.5~5.5V	DIP16 SOP16 TSSOP16
85	AiP74HC594 AiP74HCT594 <sup>▲</sup>	8位带有输出锁存功能的移位寄存器 8-bit Shift Register with Output Register	HC:2.0~6.0V HCT:4.5~5.5V	DIP16 SOP16 TSSOP16
86	AiP74HC595 AiP74HCT595	8位带有输出锁存功能的移位寄存器 8-bit Serial-in, Serial or Parallel-out Shift Register with Output Latches;3-state	HC:2.0~6.0V HCT:4.5~5.5V	DIP16 SOP16 TSSOP16
87	AiP74HC597 AiP74HCT597 <sup>▲</sup>	8位带有输入触发器的移位寄存器 8-bit Shift Register with Input Flip-flops	HC:2.0~6.0V HCT:4.5~5.5V	DIP16 SOP16 TSSOP16
88	AiP74HC640 <sup>▲</sup> AiP74HCT640 <sup>▲</sup>	带三态控制输出的8路总线收发器 (反相) Octal Bus Transceiver;3-state;Inverting	HC:2.0~6.0V HCT:4.5~5.5V	DIP20 SOP20 TSSOP20
89	AiP74HC4002 <sup>▲</sup> AiP74HCT4002 <sup>▲</sup>	2路4输入或非门 Dual 4-input Nor Gate	HC:2.0~6.0V HCT:4.5~5.5V	DIP14 SOP14 TSSOP14
90	AiP74HC4017 <sup>▲</sup> AiP74HCT4017 <sup>▲</sup>	带译码输出的Johnson十进制计数器 Johnson Decade Counter with 10 Decoded Outputs	HC:2.0~6.0V HCT:4.5~5.5V	DIP16 SOP16 TSSOP16
91	AiP74HC4020 <sup>▲</sup> AiP74HCT4020 <sup>▲</sup>	14位二进制计数器 14-stage Binary Ripple Counter	HC:2.0~6.0V HCT:4.5~5.5V	DIP16 SOP16 TSSOP16
92	AiP74HC4024 <sup>▲</sup> AiP74HCT4024 <sup>▲</sup>	7位二进制计数器 7-stage Binary Ripple Counter	HC:2.0~6.0V HCT:4.5~5.5V	DIP14 SOP14 TSSOP14
93	AiP74HC4040 AiP74HCT4040 <sup>▲</sup>	12位二进制计数器 12-stage Binary Ripple Counter	HC:2.0~6.0V HCT:4.5~5.5V	DIP16 SOP16 TSSOP16
94	AiP74HC4049 <sup>▲</sup> AiP74HCT4049 <sup>▲</sup>	六路缓冲器 (反相) Hex Inverting Buffer	HC:2.0~6.0V HCT:4.5~5.5V	DIP16 SOP16 TSSOP16
95	AiP74HC4050 <sup>▲</sup> AiP74HCT4050 <sup>▲</sup>	六路缓冲器 Hex Non-inverting Buffer	HC:2.0~6.0V HCT:4.5~5.5V	DIP16 SOP16 TSSOP16
96	AiP74HC4075 <sup>▲</sup> AiP74HCT4075 <sup>▲</sup>	3路3输入或门 Triple 3-input Or Gate	HC:2.0~6.0V HCT:4.5~5.5V	DIP14 SOP14 TSSOP14
97	AiP74HC4520 <sup>▲</sup> AiP74HCT4520 <sup>▲</sup>	2路4位同步二进制计数器 Dual 4-bit Synchronous Binary Counter	HC:2.0~6.0V HCT:4.5~5.5V	DIP16 SOP16 TSSOP16
98	AiP74HC7014 <sup>▲</sup>	六路施密特缓冲器 Hex Non-inverting Precision Schmitt Trigger	2.0~6.0V	DIP14 SOP14 TSSOP14
99	AiP74HC7266 AiP74HCT7266 <sup>▲</sup>	4路2输入同或门 Quad 2-input Exclusive-nor Gate	HC:2.0~6.0V HCT:4.5~5.5V	DIP14 SOP14 TSSOP14
100	AiP74HC40103 AiP74HCT40103 <sup>▲</sup>	8位同步二进制递减计数器 8-bit Synchronous Binary Down Counter	HC:2.0~6.0V HCT:4.5~5.5V	DIP16 SOP16 TSSOP16

# i-CORE contents

产品目录

序号 NO.	型号 Part Number	名称及主要特点 Function	工作电压 Voltage Range	封装 Package	
<b>(二) AHC/AHCT系列/AHC/AHCT Series</b>					
101	AiP74AHC1G00 <sup>▲</sup> AiP74AHCT1G00	单路2输入与非门 Single 2-input Nand Gate	AHC:2.0~5.5V AHCT:4.5~5.5V	SOT23-5 SOT353	SOT553 DFN4L
102	AiP74AHC1G02 <sup>▲</sup> AiP74AHCT1G02 <sup>▲</sup>	单路2输入或非门 Single 2-input Nor Gate	AHC:2.0~5.5V AHCT:4.5~5.5V	SOT23-5 SOT353	SOT553 DFN4L
103	AiP74AHC1G04 AiP74AHCT1G04	单路反相器 Single Inverter	AHC:2.0~5.5V AHCT:4.5~5.5V	SOT23-5 SOT353	SOT553 DFN4L
104	AiP74AHC1GU04	单路无缓冲反相器 Single Unbuffered Inverter	2.0~5.5V	SOT23-5 SOT353	SOT553 DFN4L
105	AiP74AHC1G06 <sup>▲</sup> AiP74AHCT1G06 <sup>▲</sup>	单路反相器(开漏) Single Inverter (Open-drain)	AHC:2.0~5.5V AHCT:4.5~5.5V	SOT23-5 SOT353	SOT553 DFN4L
106	AiP74AHC1G07 <sup>▲</sup> AiP74AHCT1G07 <sup>▲</sup>	单路缓冲器(开漏) Single Buffer (Open-drain)	AHC:2.0~5.5V AHCT:4.5~5.5V	SOT23-5 SOT353	SOT553 DFN4L
107	AiP74AHC1G08 AiP74AHCT1G08	单路2输入与门 Single 2-input And Gate	AHC:2.0~5.5V AHCT:4.5~5.5V	SOT23-5 SOT353	SOT553 DFN4L
108	AiP74AHC1G09 AiP74AHCT1G09 <sup>▲</sup>	单路2输入与门(开漏) Single 2-input AND Gate with Open-drain	AHC:2.0~5.5V AHCT:4.5~5.5V	SOT23-5 SOT353	SOT553 DFN4L
109	AiP74AHC1G14 AiP74AHCT1G14 <sup>▲</sup>	单路施密特反相器 Single Inverter Schmitt Trigger	AHC:2.0~5.5V AHCT:4.5~5.5V	SOT23-5 SOT353	SOT553 DFN4L
110	AiP74AHC1G17 <sup>▲</sup> AiP74AHCT1G17 <sup>▲</sup>	单路施密特缓冲器 Single Buffer Schmitt Trigger	AHC:2.0~5.5V AHCT:4.5~5.5V	SOT23-5 SOT353	SOT553 DFN4L
111	AiP74AHC1G32 <sup>▲</sup> AiP74AHCT1G32 <sup>▲</sup>	单路2输入或门 Single 2-input Or Gate	AHC:2.0~5.5V AHCT:4.5~5.5V	SOT23-5 SOT353	SOT553 DFN4L
112	AiP74AHC1G86 <sup>▲</sup> AiP74AHCT1G86 <sup>▲</sup>	单路2输入异或门 Single 2-input Exclusive-or Gate	AHC:2.0~5.5V AHCT:4.5~5.5V	SOT23-5 SOT353	SOT553 DFN4L
113	AiP74AHC1G125 AiP74AHCT1G125	带三态控制的单路缓冲器/线驱动器 Single Buffer/Line Driver;3-state	AHC:2.0~5.5V AHCT:4.5~5.5V	SOT23-5 SOT353	SOT553 DFN4L
114	AiP74AHC1G126 <sup>▲</sup> AiP74AHCT1G126 <sup>▲</sup>	带三态控制的单路缓冲器/线驱动器 Single Buffer/Line Driver;3-state	AHC:2.0~5.5V AHCT:4.5~5.5V	SOT23-5 SOT353	SOT553 DFN4L
115	AiP74AHC2G00 <sup>▲</sup> AiP74AHCT2G00 <sup>▲</sup>	2路2输入与非门 Dual 2-input Nand Gate	AHC:2.0~5.5V AHCT:4.5~5.5V	TSSOP8 XSON8	VSSOP8
116	AiP74AHC2G04 <sup>▲</sup> AiP74AHCT2G04 <sup>▲</sup>	2路反相器 Dual Inverter	AHC:2.0~5.5V AHCT:4.5~5.5V	SOT23-6 SOT363	SOT563 XSON6
117	AiP74AHC2GU04 <sup>▲</sup> AiP74AHCT2GU04 <sup>▲</sup>	2路无缓冲反相器 Dual Unbuffered Inverter	AHC:2.0~5.5V AHCT:4.5~5.5V	SOT23-6 SOT363	SOT563 XSON6
118	AiP74AHC2G08 AiP74AHCT2G08 <sup>▲</sup>	2路2输入与门 Dual 2-input And Gate	AHC:2.0~5.5V AHCT:4.5~5.5V	TSSOP8 XSON8	VSSOP8
119	AiP74AHC2G14 <sup>▲</sup> AiP74AHCT2G14 <sup>▲</sup>	2路施密特反相器 Dual Inverter Schmitt Trigger	AHC:2.0~5.5V AHCT:4.5~5.5V	SOT23-6 SOT363	SOT563 XSON6
120	AiP74AHC2G32 <sup>▲</sup> AiP74AHCT2G32 <sup>▲</sup>	2路2输入或门 Dual 2-input Or Gate	AHC:2.0~5.5V AHCT:4.5~5.5V	TSSOP8 XSON8	VSSOP8
121	AiP74AHC2G86 <sup>▲</sup> AiP74AHCT2G86 <sup>▲</sup>	2路2输入异或门 Dual 2-input Exclusive-or Gate	AHC:2.0~5.5V AHCT:4.5~5.5V	TSSOP8 XSON8	VSSOP8
122	AiP74AHC2G125 <sup>▲</sup> AiP74AHCT2G125 <sup>▲</sup>	带三态控制的2路缓冲器/线驱动器 Dual Buffer/Line Driver;3-state	AHC:2.0~5.5V AHCT:4.5~5.5V	TSSOP8 XSON8	VSSOP8
123	AiP74AHC2G126 <sup>▲</sup> AiP74AHCT2G126 <sup>▲</sup>	带三态控制的2路缓冲器/线驱动器 Dual Buffer/Line Driver;3-state	AHC:2.0~5.5V AHCT:4.5~5.5V	TSSOP8 XSON8	VSSOP8
124	AiP74AHC3G04 <sup>▲</sup> AiP74AHCT3G04 <sup>▲</sup>	3路反相器 Triple Inverter	AHC:2.0~5.5V AHCT:4.5~5.5V	TSSOP8 XSON8	VSSOP8
125	AiP74AHC3GU04 <sup>▲</sup>	3路无缓冲反相器 Triple Unbuffered Inverter	2.0~5.5V	TSSOP8 XSON8	VSSOP8

显示驱动  
Display Driver

MCU  
Microcontroller Unit

逻辑  
Logic

信号链  
Signal Chain

电源  
Power

电机驱动  
Motor Driver

音频  
Audio

遥控器  
Remote Controller

通信  
Communication

配套  
Supporting



序号 NO.	型号 Part Number	名称及主要特点 Function	工作电压 Voltage Range	封装 Package	
126	AiP74AHC3G06 <sup>▲</sup> AiP74AHCT3G06 <sup>▲</sup>	3路反相器 (开漏) Triple Inverter (Open-drain)	AHC:2.0~5.5V AHCT:4.5~5.5V	TSSOP8 XSON8	VSSOP8
127	AiP74AHC3G07 <sup>▲</sup> AiP74AHCT3G07 <sup>▲</sup>	3路缓冲器 (开漏) Triple Buffer (Open-drain)	AHC:2.0~5.5V AHCT:4.5~5.5V	TSSOP8 XSON8	VSSOP8
128	AiP74AHC3G14 <sup>▲</sup> AiP74AHCT3G14 <sup>▲</sup>	3路施密特反相器 Triple Inverter Schmitt Trigger	AHC:2.0~5.5V AHCT:4.5~5.5V	TSSOP8 XSON8	VSSOP8
129	AiP74AHC3G16 <sup>▲</sup> AiP74AHCT3G16 <sup>▲</sup>	3路缓冲器 Triple Buffer	AHC:2.0~5.5V AHCT:4.5~5.5V	TSSOP8 XSON8	VSSOP8
130	AiP74AHC3G17 <sup>▲</sup> AiP74AHCT3G17 <sup>▲</sup>	3路施密特缓冲器 Triple Buffer Schmitt Trigger	AHC:2.0~5.5V AHCT:4.5~5.5V	TSSOP8 XSON8	VSSOP8
131	AiP74AHC3G34 <sup>▲</sup> AiP74AHCT3G34 <sup>▲</sup>	3路缓冲器 Triple Buffer	AHC:2.0~5.5V AHCT:4.5~5.5V	TSSOP8 XSON8	VSSOP8
<b>(三) LV/LVC系列/ LV/LVC Series</b>					
132	AiP74LV1T00 <sup>▲</sup>	单路单电源转换2输入与非门 2-input Single Supply Translating Nand Gate	1.6~5.5V	SOT23-5 SOT553	SOT353 DFN4L
133	AiP74LV1T02 <sup>▲</sup>	单路单电源转换2输入或非门 2-input Single Supply Translating Nor Gate	1.6~5.5V	SOT23-5 SOT553	SOT353 DFN4L
134	AiP74LV1T04 <sup>▲</sup>	单路单电源转换反相器 Single Supply Translating Inverter	1.6~5.5V	SOT23-5 SOT553	SOT353 DFN4L
135	AiP74LV1T08	单路单电源转换2输入与门 2-input Single Supply Translating And Gate	1.6~5.5V	SOT23-5 SOT553	SOT353 DFN4L
136	AiP74LV1T32 <sup>▲</sup>	单路单电源转换2输入或门 2-input Single Supply Translating Or Gate	1.6~5.5V	SOT23-5 SOT553	SOT353 DFN4L
137	AiP74LV1T34	单路单电源转换缓冲器 Single Supply Translating Buffer	1.6~5.5V	SOT23-5 SOT553	SOT353 DFN4L
138	AiP74LV1T86 <sup>▲</sup>	单路单电源转换2输入异或门 2-input Single Supply Translating Exclusive-or Gate	1.6~5.5V	SOT23-5 SOT553	SOT353 DFN4L
139	AiP74LV1T87	单路单电源转换2输入同或门 2-input Single Supply Translating Exclusive-nor Gate	1.6~5.5V	SOT23-5 SOT553	SOT353 DFN4L
140	AiP74LV1T125	带三态控制的单路单电源转换缓冲器/线驱动器 Single Supply Translating Buffer/Line Driver;3-state	1.6~5.5V	SOT23-5 SOT553	SOT353 DFN4L
141	AiP74LV1T126 <sup>▲</sup>	带三态控制的单路单电源转换缓冲器/线驱动器 Single Supply Translating Buffer/Line Driver;3-state	1.6~5.5V	SOT23-5 SOT553	SOT353 DFN4L
142	AiP74LV4T125	带三态控制的4路单电源转换缓冲器/线驱动器 Quad Single Supply Translating Buffer/Line Driver;3-state	1.6~5.5V	DIP14 TSSOP14	SOP14
143	AiP74LVC1G00	单路2输入与非门 Single 2-input Nand Gate	1.65~5.5V	SOT23-5 SOT553	SOT353 DFN4L
144	AiP74LVC1G02	单路2输入或非门 Single 2-input Nor Gate	1.65~5.5V	SOT23-5 SOT553	SOT353 DFN4L
145	AiP74LVC1G04	单路反相器 Single Inverter	1.65~5.5V	SOT23-5 SOT553	SOT353 DFN4L
146	AiP74LVC1GU04	单路无缓冲反相器 Single Unbuffered Inverter	1.65~5.5V	SOT23-5 SOT553	SOT353 DFN4L
147	AiP74LVC1G06	单路反相器 (开漏) Single Inverter (Open-drain)	1.65~5.5V	SOT23-5 SOT553	SOT353 DFN4L
148	AiP74LVC1G07	单路缓冲器 (开漏) Single Buffer (Open-drain)	1.65~5.5V	SOT23-5 SOT553	SOT353 DFN4L
149	AiP74LVC1G08	单路2输入与门 Single 2-input And Gate	1.65~5.5V	SOT23-5 SOT553	SOT353 DFN4L
150	AiP74LVC1G10 <sup>▲</sup>	单路3输入与非门 Single 3-input Nand Gate	1.65~5.5V	SOT23-6 SOT563	SOT363 XSON6

# i-CORE contents

产品目录

序号 NO.	型号 Part Number	名称及主要特点 Function	工作电压 Voltage Range	封装 Package
151	AiP74LVC1G11	单路3输入与门 Single 3-input And Gate	1.65~5.5V	SOT23-6 SOT563 XSON6
152	AiP74LVC1G14	单路施密特反相器 Single Inverter Schmitt Trigger	1.65~5.5V	SOT23-5 SOT553 DFN4L
153	AiP74LVC1G16	单路缓冲器 Single Buffer	1.65~5.5V	SOT23-5 SOT553 DFN4L
154	AiP74LVC1G17	单路施密特缓冲器 Single Buffer Schmitt Trigger	1.65~5.5V	SOT23-5 SOT553 DFN4L
155	AiP74LVC1G18	带三态输出的1-2信号分离器 1-to-2 Demultiplexer;3-state	1.65~5.5V	SOT23-6 SOT563 XSON6
156	AiP74LVC1G19	1-2译码器/信号分离器 1-to-2 Decoder/Demultiplexer	1.65~5.5V	SOT23-6 SOT563 XSON6
157	AiP74LVC1G27	单路3输入或非门 Single 3-input Nor Gate	1.65~5.5V	SOT23-6 SOT563 XSON6
158	AiP74LVC1G32	单路2输入或门 Single 2-input Or Gate	1.65~5.5V	SOT23-5 SOT553 DFN4L
159	AiP74LVC1G34	单路缓冲器 Single Buffer	1.65~5.5V	SOT23-5 SOT553 DFN4L
160	AiP74LVC1G38	单路2输入与非门(开漏) Single 2-input Nand Gate (Open-drain)	1.65~5.5V	SOT23-5 SOT553 DFN4L
161	AiP74LVC1G57	单路可配置的多功能门电路 Single Configurable Multiple Function Gate	1.65~5.5V	SOT23-6 SOT563 XSON6
162	AiP74LVC1G74	单路带置位复位功能上升沿触发D触发器 Single D-type Flip-flop with Set and Reset;Positive-edge Trigger	1.65~5.5V	TSSOP8 XSON8 VSSOP8
163	AiP74LVC1G79	上升沿触发D型触发器 Single D-type Flip-flop;Positive-edge Trigger	1.65~5.5V	SOT23-5 SOT553 DFN4L
164	AiP74LVC1G86	单路2输入异或门 Single 2-input Exclusive-or Gate	1.65~5.5V	SOT23-5 SOT553 DFN4L
165	AiP74LVC1G97	低压可配置多功能门电路 Low-power Configurable Multiple Function Gate	1.65~5.5V	SOT23-6 SOT563 XSON6
166	AiP74LVC1G123	单路可重复触发单稳态触发器 Single Retriggerable Monostable Multivibrator;Schmitt Trigger Inputs	1.65~5.5V	TSSOP8 XSON8 VSSOP8
167	AiP74LVC1G125	带三态控制的单路缓冲器/线驱动器 Single Buffer/Line Driver;3-state	1.65~5.5V	SOT23-5 SOT553 DFN4L
168	AiP74LVC1G126	带三态控制的单路缓冲器/线驱动器 Single Buffer/Line Driver;3-state	1.65~5.5V	SOT23-5 SOT553 DFN4L
169	AiP74LVC1G157	单路2输入多路复用器 Single 2-input Multiplexer	1.65~5.5V	SOT23-6 SOT563 XSON6
170	AiP74LVC1G240	带三态控制的单路缓冲器/线驱动器 Single Buffer/Line Driver;3-state	1.65~5.5V	SOT23-5 SOT553 DFN4L
171	AiP74LVC1G332 <sup>▲</sup>	单路3输入或门 Single 3-input Or Gate	1.65~5.5V	SOT23-6 SOT563 XSON6
172	AiP74LVC2G00 <sup>▲</sup>	2路2输入与非门 Dual 2-input Nand Gate	1.65~5.5V	TSSOP8 XSON8 VSSOP8
173	AiP74LVC2G02	2路2输入或非门 Dual 2-input Nor Gate	1.65~5.5V	TSSOP8 XSON8 VSSOP8
174	AiP74LVC2G04	2路反相器 Dual Inverter	1.65~5.5V	SOT23-6 SOT563 XSON6
175	AiP74LVC2GU04	2路无缓冲反相器 Dual Unbuffered Inverter	1.65~5.5V	SOT23-6 SOT563 XSON6
176	AiP74LVC2G06 <sup>▲</sup>	2路反相器(开漏) Dual Inverter (Open-drain)	1.65~5.5V	SOT23-6 SOT563 XSON6

显示驱动  
Display Driver

MCU  
Microcontroller Unit

逻辑  
Logic

信号链  
Signal Chain

电源  
Power

电机驱动  
Motor Driver

音频  
Audio

遥控器  
Remote Controller

通信  
Communication

配套  
Supporting

# i-CORE contents

产品目录

序号 NO.	型号 Part Number	名称及主要特点 Function	工作电压 Voltage Range	封装 Package
177	AiP74LVC2G07	2路缓冲器 (开漏) Dual Buffer (Open-drain)	1.65~5.5V	SOT23-6 SOT363 SOT563 XSON6
178	AiP74LVC2G08	2路2输入与门 Dual 2-input And Gate	1.65~5.5V	TSSOP8 VSSOP8 XSON8
179	AiP74LVC2G14	2路施密特反相器 Dual Inverter Schmitt Trigger	1.65~5.5V	SOT23-6 SOT363 SOT563 XSON6
180	AiP74LVC2G16 <sup>▲</sup>	2路缓冲器 Dual Buffer	1.65~5.5V	SOT23-6 SOT363 SOT563 XSON6
181	AiP74LVC2G17	2路施密特缓冲器 Dual Buffer Schmitt Trigger	1.65~5.5V	SOT23-6 SOT363 SOT563 XSON6
182	AiP74LVC2G32	2路2输入或门 Dual 2-input Or Gate	1.65~5.5V	TSSOP8 VSSOP8 XSON8
183	AiP74LVC2G34	2路缓冲器 Dual Buffer	1.65~5.5V	SOT23-6 SOT363 SOT563 XSON6
184	AiP74LVC2G38 <sup>▲</sup>	2路2输入与非门 (开漏) Dual 2-input Nand Gate (Open-drain)	1.65~5.5V	TSSOP8 VSSOP8 XSON8
185	AiP74LVC2G74	单路带置位复位功能上升沿触发D触发器 Single D-type Flip-flop with Set and Reset, Positive-edge Trigger	1.65~5.5V	TSSOP8 VSSOP8 XSON8
186	AiP74LVC2G86 <sup>▲</sup>	2路2输入异或门 Dual 2-input Exclusive-or Gate	1.65~5.5V	TSSOP8 VSSOP8 XSON8
187	AiP74LVC2G125	带三态控制的2路缓冲器/线驱动器 Dual Buffer/Line Driver, 3-state	1.65~5.5V	TSSOP8 VSSOP8 XSON8
188	AiP74LVC2G126	带三态控制的2路缓冲器/线驱动器 Dual Buffer/Line Driver, 3-state	1.65~5.5V	TSSOP8 VSSOP8 XSON8
189	AiP74LVC3G04 <sup>▲</sup>	3路反相器 Triple Inverter	1.65~5.5V	TSSOP8 VSSOP8 XSON8
190	AiP74LVC3GU04 <sup>▲</sup>	3路无缓冲反相器 Triple Unbuffered Inverter	1.65~5.5V	TSSOP8 VSSOP8 XSON8
191	AiP74LVC3G06 <sup>▲</sup>	3路反相器 (开漏) Triple Inverter (Open-drain)	1.65~5.5V	TSSOP8 VSSOP8 XSON8
192	AiP74LVC3G07 <sup>▲</sup>	3路缓冲器 (开漏) Triple Buffer (Open-drain)	1.65~5.5V	TSSOP8 VSSOP8 XSON8
193	AiP74LVC3G14	3路施密特反相器 Triple Inverter Schmitt Trigger	1.65~5.5V	TSSOP8 VSSOP8 XSON8
194	AiP74LVC3G16 <sup>▲</sup>	3路缓冲器 Triple Buffer	1.65~5.5V	TSSOP8 VSSOP8 XSON8
195	AiP74LVC3G17 <sup>▲</sup>	3路施密特缓冲器 Triple Buffer Schmitt Trigger	1.65~5.5V	TSSOP8 VSSOP8 XSON8
196	AiP74LVC3G34	3路缓冲器 Triple Buffer	1.65~5.5V	TSSOP8 VSSOP8 XSON8
197	AiP74LV00 <sup>▲</sup> AiP74LVC00	4路2输入与非门 Quad 2-input Nand Gate	LV: 1.0~5.5V LVC: 1.2~3.6V	DIP14 SOP14 TSSOP14
198	AiP74LV02 <sup>▲</sup> AiP74LVC02 <sup>▲</sup>	4路2输入或非门 Quad 2-input Nor Gate	LV: 1.0~5.5V LVC: 1.2~3.6V	DIP14 SOP14 TSSOP14
199	AiP74LV03 <sup>▲</sup> AiP74LVC03 <sup>▲</sup>	4路2输入与非门 (开漏) Quad 2-input Nand Gate with Open-drain Outputs	LV: 1.0~5.5V LVC: 1.2~3.6V	DIP14 SOP14 TSSOP14
200	AiP74LV04 <sup>▲</sup> AiP74LVC04	6路反相器 Hex Inverter	LV: 1.0~5.5V LVC: 1.2~3.6V	DIP14 SOP14 TSSOP14
201	AiP74LVU04 <sup>▲</sup> AiP74LVU04 <sup>▲</sup>	6路无缓冲反相器 Hex Unbuffered Inverter	LV: 1.0~5.5V LVC: 1.2~3.6V	DIP14 SOP14 TSSOP14
202	AiP74LV05 <sup>▲</sup> AiP74LVC05 <sup>▲</sup>	6路反相器 (开漏) Hex Inverter with Open-drain Outputs	LV: 1.0~5.5V LVC: 1.2~3.6V	DIP14 SOP14 TSSOP14

# i-CORE contents

产品目录

序号 NO.	型号 Part Number	名称及主要特点 Function	工作电压 Voltage Range	封装 Package	
203	AiP74LV07 <sup>▲</sup> AiP74LVC07	6路缓冲器 (开漏) Hex Buffer with Open-drain Outputs	LV:1.0~5.5V LVC:1.2~5.5V	DIP14 TSSOP14	SOP14
204	AiP74LV08 <sup>▲</sup> AiP74LVC08	4路2输入与门 Quad 2-input And Gate	LV:1.0~5.5V LVC:1.2~3.6V	DIP14 TSSOP14	SOP14
205	AiP74LV10 <sup>▲</sup> AiP74LVC10 <sup>▲</sup>	3路3输入与非门 Triple 3-input Nand Gate	LV:1.0~5.5V LVC:1.2~3.6V	DIP14 TSSOP14	SOP14
206	AiP74LV11 <sup>▲</sup> AiP74LVC11 <sup>▲</sup>	3路3输入与门 Triple 3-input And Gate	LV:1.0~5.5V LVC:1.2~3.6V	DIP14 TSSOP14	SOP14
207	AiP74LV14 AiP74LVC14	6路施密特反相器 Hex Inverting Schmitt Trigger	LV:1.0~5.5V LVC:1.2~3.6V	DIP14 TSSOP14	SOP14
208	AiP74LV17 <sup>▲</sup> AiP74LVC17 <sup>▲</sup>	6路施密特缓冲器 Hex Buffer Schmitt Trigger	LV:1.0~5.5V LVC:1.2~3.6V	DIP14 TSSOP14	SOP14
209	AiP74LV20 <sup>▲</sup> AiP74LVC20 <sup>▲</sup>	2路4输入与非门 Dual 4-input Nand Gate	LV:1.0~5.5V LVC:1.2~3.6V	DIP14 TSSOP14	SOP14
210	AiP74LV21 <sup>▲</sup> AiP74LVC21 <sup>▲</sup>	2路4输入与门 Dual 4-input Positive-and Gate	LV:1.0~5.5V LVC:1.2~3.6V	DIP14 TSSOP14	SOP14
211	AiP74LV27 <sup>▲</sup> AiP74LVC27 <sup>▲</sup>	3路3输入或非门 Triple 3-input Nor Gate	LV:1.0~5.5V LVC:1.2~3.6V	DIP14 TSSOP14	SOP14
212	AiP74LV32 AiP74LVC32	4路2输入或门 Quad 2-input Or Gate	LV:1.0~5.5V LVC:1.2~3.6V	DIP14 TSSOP14	SOP14
213	AiP74LV74 <sup>▲</sup> AiP74LVC74	2路带置位/复位的上升沿触发D型触发器 Dual D-type Flip-flop with Set and Reset,Positive-edge Trigger	LV:1.0~5.5V LVC:1.2~3.6V	DIP14 TSSOP14	SOP14
214	AiP74LV86 <sup>▲</sup> AiP74LVC86 <sup>▲</sup>	4路2输入异或门 Quad 2-input Exclusive-or Gate	LV:1.0~5.5V LVC:1.2~3.6V	DIP14 TSSOP14	SOP14
215	AiP74LV125 <sup>▲</sup> AiP74LVC125	带三态控制的4路缓冲器/线驱动器 Quad Buffer/Line Driver;3-state	LV:1.0~5.5V LVC:1.2~3.6V	DIP14 TSSOP14	SOP14
216	AiP74LV126 <sup>▲</sup> AiP74LVC126	带三态控制的4路缓冲器/线驱动器 Quad Buffer/Line Driver;3-state	LV:1.0~5.5V LVC:1.2~3.6V	DIP14 TSSOP14	SOP14
217	AiP74LV132 <sup>▲</sup> AiP74LVC132 <sup>▲</sup>	4路2输入施密特与非门 Quad 2-input Nand Schmitt Trigger	LV:1.0~5.5V LVC:1.2~3.6V	DIP14 TSSOP14	SOP14
218	AiP74LV138 <sup>▲</sup> AiP74LVC138	3-8译码器/信号分离器 (反相) 3-to-8 Line Decoder/Demultiplexer;Inverting	LV:1.0~5.5V LVC:1.2~3.6V	DIP16 SOP16	DHVQFN16 TSSOP16
219	AiP74LV139 <sup>▲</sup> AiP74LVC139 <sup>▲</sup>	2路2-4译码器/信号分离器 Dual 2-to-4 Line Decoder/Demultiplexer	LV:1.0~5.5V LVC:1.2~3.6V	DIP16 TSSOP16	SOP16
220	AiP74LV153 <sup>▲</sup> AiP74LVC153 <sup>▲</sup>	2路4输入多路复用器 Dual 4-input Multiplexer	LV:1.0~5.5V LVC:1.2~3.6V	DIP16 TSSOP16	SOP16
221	AiP74LV157 <sup>▲</sup> AiP74LVC157	4路2输入多路复用器 Quad 2-input Multiplexer	LV:1.0~5.5V LVC:1.2~3.6V	DIP16 TSSOP16	SOP16
222	AiP74LV164 AiP74LVC164 <sup>▲</sup>	8位串入并出移位寄存器 8-bit Serial-in/Parallel-out Shift Register	LV:1.0~5.5V LVC:1.2~3.6V	DIP14 TSSOP14	DHVQFN14 SOP14
223	AiP74LV165 AiP74LVC165 <sup>▲</sup>	8位并入串出移位寄存器 8-bit Parallel-in/Serial-out Shift Register	LV:1.0~5.5V LVC:1.2~3.6V	DIP16 TSSOP16	SOP16
224	AiP74LV244 <sup>▲</sup> AiP74LVC244	带三态控制的8路缓冲器/线驱动器 Octal Buffer/Line Driver;3-state	LV:1.0~5.5V LVC:1.2~3.6V	SOP20 DHVQFN20	TSSOP20
225	AiP74LV245 <sup>▲</sup> AiP74LVC245	带三态控制的8路总线收发器 Octal Bus Transceiver;3-state	LV:1.0~5.5V LVC:1.2~3.6V	SOP20 DHVQFN20	TSSOP20
226	AiP74LV251 <sup>▲</sup> AiP74LVC251 <sup>▲</sup>	带三态控制的8输入多路复用器 8-input Multiplexer;3-state	LV:1.0~5.5V LVC:1.2~3.6V	DIP16 TSSOP16	SOP16
227	AiP74LV257 <sup>▲</sup> AiP74LVC257 <sup>▲</sup>	带三态控制的4路2输入多路复用器 Quad 2-input Multiplexer;3-state	LV:1.0~5.5V LVC:1.2~3.6V	DIP16 TSSOP16	SOP16
228	AiP74LV365 <sup>▲</sup> AiP74LVC365 <sup>▲</sup>	带三态控制的6路缓冲器/线驱动器 Hex Buffer/Line Driver;3-state	LV:1.0~5.5V LVC:1.2~3.6V	DIP16 TSSOP16	SOP16

显示驱动  
Display Driver

MCU  
Microcontroller Unit

逻辑  
Logic

信号链  
Signal Chain

电源  
Power

电机驱动  
Motor Driver

音频  
Audio

遥控器  
Remote Controller

通信  
Communication

配套  
Supporting

# i-CORE contents

产品目录

序号 NO.	型号 Part Number	名称及主要特点 Function	工作电压 Voltage Range	封装 Package
229	AiP74LV367 <sup>▲</sup> AiP74LVC367 <sup>▲</sup>	带三态控制的6路缓冲器/线驱动器 Hex Buffer/Line Driver;3-state	LV:1.0~5.5V LVC:1.2~3.6V	DIP16    SOP16 TSSOP16
230	AiP74LV541 <sup>▲</sup> AiP74LVC541	带三态控制的8路缓冲器/线驱动器 Octal Buffer/Line Driver;3-state	LV:1.0~5.5V LVC:1.2~3.6V	SOP20    TSSOP20 DHVQFN20
231	AiP74LV573 <sup>▲</sup> AiP74LVC573	带三态控制的8位D型锁存器 Octal D-type Transparent Latch;3-state	LV:1.0~5.5V LVC:1.2~3.6V	SOP20    TSSOP20 DHVQFN20
232	AiP74LV574 <sup>▲</sup> AiP74LVC574	带三态控制的8位上升沿触发D型触发器 Octal D-type flip-flop;positive edge-trigger;3-state	LV:1.0~5.5V LVC:1.2~3.6V	SOP20    TSSOP20 DHVQFN20
233	AiP74LVC4245	双电源带三态控制的8路总线收发器 Octal Dual Supply Translating Transceiver;3-state	VDDA:1.5~5.5V VDDDB:1.5~3.6V	SOP24    TSSOP24 DHVQFN24
234	AiP74LVC16245	带三态控制的16路总线收发器 16-bit Bus Transceiver;3-state	1.2~3.6V	TSSOP48
235	AiP74LVC16373	带三态控制的16位D型锁存器 16-bit D-type Transparent Latch;3-state	1.2~3.6V	TSSOP48
236	AiP74LVC162373 <sup>▲</sup>	带三态控制和内置电阻的16位D型锁存器 16-bit D-type Transparent Latch with Termination Resistors;3-state	1.2~3.6V	TSSOP48
237	AiP74LVC1T45	双电源带三态控制的总线收发器 Dual Supply Translating Transceiver;3-state	VDDA:1.2~5.5V VDDDB:1.2~5.5V	SOT23-6 SOT363
238	AiP74LVC2T45 AiP74LVCH2T45	双电源带三态控制的2路总线收发器 2-bit Dual Supply Translating Transceiver;3-state	VDDA:1.2~5.5V VDDDB:1.2~5.5V	VSSOP8
239	AiP74LVC4T245	双电源带三态控制的4路总线收发器 4-bit Dual Supply Translating Transceiver;3-state	VDDA:1.2~5.5V VDDDB:1.2~5.5V	SOP16 TSSOP16
240	AiP74LVC4T774	双电源带三态控制的4路总线收发器 4-bit Dual Supply Translating Transceiver;3-state	VDDA:1.2~5.5V VDDDB:1.2~5.5V	SOP16 TSSOP16
241	AiP74LVC8T245 AiP74LVCH8T245	双电源带三态控制的8路总线收发器 8-bit Dual Supply Translating Transceiver;3-state	VDDA:1.2~5.5V VDDDB:1.2~5.5V	TSSOP24 DHVQFN24
242	AiP74LVC16T245 AiP74LVCH16T245	双电源带三态控制的16路总线收发器 16-bit Dual Supply Translating Transceiver;3-state	VDDA:1.2~5.5V VDDDB:1.2~5.5V	TSSOP48
243	AiP74ALVC164245	双电源带三态控制的16路总线收发器 16-bit Dual Supply Translating Transceiver;3-state	VDDA:1.5~3.6V VDDDB:1.2~5.5V	TSSOP48
244	AiP74ALVCH162374 <sup>▲</sup>	带三态输出和总线保持的16位沿触发D型触发器 16-bit Edge-triggered D-type Flip-flop with 3-state outputs and bus hold	1.65~3.6V	TSSOP48
<b>( 四 ) LVT系列/ LVT Series</b>				
245	AiP74LVTH125	带三态控制和总线保持的4路缓冲器/线驱动器 Quad Buffer/Line Driver;3-state;Bus hold	2.7~3.6V	SOP14 TSSOP14
246	AiP74LVTH244	带三态控制和总线保持的8路缓冲器/线驱动器 Octal Buffer/Line Driver;3-state;Bus hold	2.7~3.6V	SOP20 TSSOP20
247	AiP74LVT245	带三态控制的8路总线收发器 Octal Bus Transceiver;3-state	2.7~3.6V	SOP20    TSSOP20 DHVQFN20
248	AiP74LVT2244	带三态控制的8路缓冲器/线驱动器 Octal Buffer/Line Driver with 30Ω Termination Resistors;3-state	2.7~3.6V	SOP20 TSSOP20
249	AiP74LVT2245	带三态控制的8路总线收发器 Octal Bus Transceiver with 30Ω Termination Resistors;3-state	2.7~3.6V	SOP20 TSSOP20
250	AiP74LVT16244	带三态控制的16路缓冲器/线驱动器 16-bit Buffer/Line Driver;3-state	2.7~3.6V	TSSOP48
251	AiP74LVT16245	带三态控制的16路总线收发器 16-bit D-type Transparent Latch;3-state	2.7~3.6V	TSSOP48
252	AiP74LVT16373	带三态控制的16位D型锁存器 16-bit D-type Transparent Latch;3-state	2.7~3.6V	TSSOP48
253	AiP74LVT16374	带三态控制的16位上升沿触发D型触发器 16-bit D-type Flip-flop;Positive Edge-trigger;3-state	2.7~3.6V	TSSOP48
<b>( 五 ) AVC系列/ AVC Series</b>				
254	AiP74AVC1T45	双电源带三态控制的单路总线收发器 Dual Supply Translating Transceiver;3-state	VDDA:0.8~3.6V VDDDB:0.8~3.6V	SOT23-6 SOT363

# i-CORE contents

产品目录

序号 NO.	型号 Part Number	名称及主要特点 Function	工作电压 Voltage Range	封装 Package
255	AiP74AVC2T45 AiP74AVCH2T45	双电源带三态控制的2路总线收发器 2-bit Dual Supply Translating Transceiver;3-state	VDDA:0.8~3.6V VDDDB:0.8~3.6V	TSSOP8 VSSOP8
256	AiP74AVC4T245 AiP74AVCH4T245	双电源带三态控制的4路总线收发器 4-bit Dual Supply Translating Transceiver;3-state	VDDA:0.8~3.6V VDDDB:0.8~3.6V	SOP16 TSSOP16 DHVQFN16
257	AiP74AVC4T774	双电源带三态控制的4路总线收发器 4-bit Dual Supply Translating Transceiver;3-state	VDDA:0.8~3.6V VDDDB:0.8~3.6V	DHVQFN16
258	AiP74AVC8T245	双电源带三态控制的8路总线收发器 8-bit Dual Supply Translating Transceiver;3-state	VDDA:0.8~3.6V VDDDB:0.8~3.6V	TSSOP24 DHVQFN24
259	AiP74AVC16T245	双电源带三态控制的16路总线收发器 16-bit Dual Supply Translating Transceiver;3-state	VDDA:0.8~3.6V VDDDB:0.8~3.6V	TSSOP48
<b>(六) AUP系列/ AUP Series</b>				
260	AiP74AUP1G00 <sup>▲</sup>	低压单路2输入与非门 Low Power Single 2-input Nand Gate	0.8~3.6V	SOT23-5 SOT353
261	AiP74AUP1G02 <sup>▲</sup>	低压单路2输入或非门 Low Power Single 2-input Nor Gate	0.8~3.6V	SOT23-5 SOT353
262	AiP74AUP1G04 <sup>▲</sup>	低压单路反相器 Low Power Single Inverter	0.8~3.6V	SOT23-5 SOT353
263	AiP74AUP1GU04 <sup>▲</sup>	低压单路无缓冲反相器 Low Power Single Unbuffered Inverter	0.8~3.6V	SOT23-5 SOT353
264	AiP74AUP1G06 <sup>▲</sup>	低压单路反相器 (开漏) Low Power Single Inverter (Open-drain)	0.8~3.6V	SOT23-5 SOT353
265	AiP74AUP1G07	低压单路缓冲器 (开漏) Low Power Single Buffer (Open-drain)	0.8~3.6V	SOT23-5 SOT353
266	AiP74AUP1G08	低压单路2输入与门 Low Power Single 2-input And Gate	0.8~3.6V	SOT23-5 SOT353
267	AiP74AUP1G14 <sup>▲</sup>	低压单路施密特反相器 Low Power Single Inverter Schmitt Trigger	0.8~3.6V	SOT23-5 SOT353
268	AiP74AUP1G16 <sup>▲</sup>	低压单路缓冲器 Low Power Single Buffer	0.8~3.6V	SOT23-5 SOT353
269	AiP74AUP1G17 <sup>▲</sup>	低压单路施密特缓冲器 Low Power Single Buffer Schmitt Trigger	0.8~3.6V	SOT23-5 SOT353
270	AiP74AUP1G32	低压单路2输入或门 Low Power Single 2-input Or Gate	0.8~3.6V	SOT23-5 SOT353
271	AiP74AUP1G74	低压单路带置位复位功能上升沿触发D触发器 Low Power Single D-type Flip-flop with Set and Reset;Positive-edge Trigger	0.8~3.6V	TSSOP8 VSSOP8
272	AiP74AUP1G86 <sup>▲</sup>	低压单路2输入异或门 Low Power Single 2-input Exclusive-or Gate	0.8~3.6V	SOT23-5 SOT353
273	AiP74AUP1G97	低压带三态控制的单路缓冲器/线驱动器 Low Power Single Buffer/Line Driver;3-state	0.8~3.6V	SOT23-5 SOT353
274	AiP74AUP1G125	低压带三态控制的单路缓冲器/线驱动器 Low Power Single Buffer/Line Driver;3-state	0.8~3.6V	SOT23-5 SOT353
275	AiP74AUP1G126 <sup>▲</sup>	低压带三态控制的单路缓冲器/线驱动器 Low Power Single Buffer/Line Driver;3-state	0.8~3.6V	SOT23-5 SOT353
276	AiP74AUP2G00 <sup>▲</sup>	低压2路2输入与非门 Low Power Dual 2-input Nand Gate	0.8~3.6V	TSSOP8 VSSOP8
277	AiP74AUP2G02 <sup>▲</sup>	低压2路2输入或非门 Low Power Dual 2-input Nor Gate	0.8~3.6V	TSSOP8 VSSOP8
278	AiP74AUP2G04	低电压2路反相器 Low Power Dual Inverter	0.8~3.6V	SOT23-6 SOT363
279	AiP74AUP2GU04 <sup>▲</sup>	低压2路无缓冲反相器 Low Power Dual Unbuffered Inverter	0.8~3.6V	SOT23-6 SOT363

显示驱动  
Display Driver

MCU  
Microcontroller Unit

逻辑  
Logic

信号链  
Signal Chain

电源  
Power

电机驱动  
Motor Driver

音频  
Audio

遥控器  
Remote Controller

通信  
Communication

配套  
Supporting

序号 NO.	型号 Part Number	名称及主要特点 Function	工作电压 Voltage Range	封装 Package
280	AiP74AUP2G06 <sup>▲</sup>	低压2路反相器 (开漏) Low Power Dual Inverter (Open-drain)	0.8~3.6V	SOT23-6 SOT363
281	AiP74AUP2G07 <sup>▲</sup>	低压2路缓冲器 (开漏) Low Power Dual Buffer (Open-drain)	0.8~3.6V	SOT23-6 SOT363
282	AiP74AUP2G08 <sup>▲</sup>	低压2路2输入与门 Low Power Dual 2-input And Gate	0.8~3.6V	TSSOP8 VSSOP8
283	AiP74AUP2G14 <sup>▲</sup>	低压2路施密特反相器 Low Power Dual Inverter Schmitt Trigger	0.8~3.6V	SOT23-6 SOT363
284	AiP74AUP2G16 <sup>▲</sup>	低压2路缓冲器 Low Power Dual Buffer	0.8~3.6V	SOT23-6 SOT363
285	AiP74AUP2G17 <sup>▲</sup>	低压2路施密特缓冲器 Low Power Dual Buffer Schmitt Trigger	0.8~3.6V	SOT23-6 SOT363
286	AiP74AUP2G32	低压2路2输入或门 Low Power Dual 2-input Or Gate	0.8~3.6V	TSSOP8 VSSOP8
287	AiP74AUP2G74 <sup>▲</sup>	低压单路带置位复位功能上升沿触发D触发器 Low Power Single D-type Flip-flop with Set and Reset;Positive-edge Trigger	0.8~3.6V	TSSOP8 VSSOP8
288	AiP74AUP2G86 <sup>▲</sup>	低压2路2输入异或门 Low Power Dual 2-input Exclusive-or Gate	0.8~3.6V	TSSOP8 VSSOP8
289	AiP74AUP2G125 <sup>▲</sup>	低压带三态控制的2路缓冲器/线驱动器 Low Power Dual Buffer/Line Driver;3-state	0.8~3.6V	TSSOP8 VSSOP8
290	AiP74AUP2G126 <sup>▲</sup>	低压带三态控制的2路缓冲器/线驱动器 Low Power Dual Buffer/Line Driver;3-state	0.8~3.6V	TSSOP8 VSSOP8
291	AiP74AUP3G14	低压3路施密特反相器 Low-Power Triple Schmitt Trigger Inverter	0.8~3.6V	TSSOP8 VSSOP8
292	AiP74AUP1T17	单路施密特缓冲器 Low Power Single Buffer Schmitt Trigger	2.3~3.6V	SOT23-5 SOT353
293	AiP74AUP1T34	低压双电源缓冲器 Low Power Dual Supply Translating Buffer	VDDA:1.1~3.6V VDDB:1.1~3.6V	SOT23-5 SOT353
294	AiP74AUP1T87	低压2输入同或门 Low Power 2-input Exclusive-or Gate	2.3~3.6V	SOT23-5 SOT353
<b>(七) 电平转换系列/Level-Shifting Series</b>				
295	AiPTS0101	单路双向电平电压转换器 1-bit Bidirectional Level-Shifting,Voltage-Level Translator	VDDA:1.65~3.6V VDDB:2.3~5.5V	SOT23-6 SOT363
296	AiPTS0102	2路双向电平电压转换器 2-bit Bidirectional Level-Shifting,Voltage-Level Translator	VDDA:1.65~3.6V VDDB:2.3~5.5V	TSSOP8 VSSOP8
297	AiPTS0103	3路双向电平电压转换器 3-bit Bidirectional Level-Shifting,Voltage-Level Translator	VDDA:1.65~3.6V VDDB:2.3~5.5V	QFN10
298	AiPTS0104	4路双向电平电压转换器 4-bit Bidirectional Level-Shifting,Voltage-Level Translator	VDDA:1.65~3.6V VDDB:2.3~5.5V	SOP14 TSSOP14 DHVQFN14
299	AiPTS0108	8路双向电平电压转换器 8-bit Bidirectional Level-Shifting,Voltage-Level Translator	VDDA:1.65~3.6V VDDB:2.3~5.5V	TSSOP20
300	AiPTS2102	2路双向电平电压转换器 2-bit Bidirectional Level-Shifting,Voltage-Level Translator	VDDA:1.65~5.5V VDDB:1.65~5.5V	QFN8
301	AiPTB0101	单路双向电平电压转换器 1-bit Bidirectional Level-Shifting,Voltage-Level Translator	VDDA:1.2~3.6V VDDB:1.65~5.5V	SOT23-6 SOT363
302	AiPTB0102	2路双向电平电压转换器 2-bit Bidirectional Level-Shifting,Voltage-Level Translator	VDDA:1.2~3.6V VDDB:1.65~5.5V	TSSOP8 VSSOP8
303	AiPTB0104	4路双向电平电压转换器 4-bit Bidirectional Level-Shifting,Voltage-Level Translator	VDDA:1.2~3.6V VDDB:1.65~5.5V	SOP14 TSSOP14 DHVQFN14
304	AiPTB0106	6路双向电平电压转换器 6-bit Bidirectional Level-Shifting,Voltage-Level Translator	VDDA:1.2~3.6V VDDB:1.65~5.5V	SOP16 TSSOP16
305	AiPTB0108	8路双向电平电压转换器 8-bit Bidirectional Level-Shifting,Voltage-Level Translator	VDDA:1.2~3.6V VDDB:1.65~5.5V	SOP20 TSSOP20
306	AiPLS0101	单通道自动双向总线接口电路 1-Channel Auto-Bidirectional Multi-Voltage Level Translator	0~5.0V	XSON6

# i-CORE contents

产品目录

序号 NO.	型号 Part Number	名称及主要特点 Function	工作电压 Voltage Range	封装 Package	
307	AiPLS0102	双通道自动双向总线接口电路 2-Channel Auto-Bidirectional Multi-Voltage Level Translator	0~5.0V	TSSOP8 VSSOP8	
308	AiPLS0104	四通道自动双向总线接口电路 4-Channel Auto-Bidirectional Multi-Voltage Level Translator	0~5.0V	SOP14 TSSOP14	SSOP14
309	AiPLS0108	八通道自动双向总线接口电路 8-Channel Auto-Bidirectional Multi-Voltage Level Translator	0~5.0V	SOP20 TSSOP20	SSOP20
310	AiP2206	双向I <sup>2</sup> C总线接口电路 Dual Bidirectional I <sup>2</sup> C-Bus and SMBus Voltage-Level Translator	0~5.0V	TSSOP8	
311	AiPGTL2002	2路双向低压转换器 2-bit Bidirectional Low Voltage Translator	0.8~5.0V	TSSOP8 VSSOP8	
312	AiPGTL2003	8路双向低压转换器 8-bit Bidirectional Low Voltage Translator	0.8~5.0V	SOP20 TSSOP20	DHVQFN20 SSOP20
313	AiPGTL2005	4路GTL/GTL+到LVTTTL/TTL双向无锁存转换器 Quad GTL/GTL+ to LVTTTL/TTL Bidirectional Non-latched Translator	3~3.6V	SOP14 SSOP14	TSSOP14
314	AiPGTL2010	10路双向低压转换器 10-bit Bidirectional Low Voltage Translator	0.8~5.0V	SOP24 SSOP24	DHVQFN24 TSSOP24
315	AiPGTL2012	2路LVTTTL到GTL转换器 2-bit LVTTTL to GTL Transceiver	3~3.6V	SOP14 SSOP14	TSSOP14
316	AiPGTL2014	4路LVTTTL到GTL转换器 4-bit LVTTTL to GTL Transceiver	3~3.6V	SOP14 SSOP14	TSSOP14
317	AiPGTL2034	4路GTL到GTL缓冲器 4-bit GTL to GTL Buffer	3~3.6V	SOP14 SSOP14	TSSOP14
<b>(八) 模拟开关系列/Analog Multiplexer Demultiplexer Series</b>					
318	AiP74HC4051 AiP74VHC4051	八选一模拟开关 8-channel Analog Multiplexer/Demultiplexer	VDD:3.0~9.0V VDD-VEE:3.0~9.0V	DIP16 TSSOP16	DHVQFN16 SOP16
319	AiP74HC4052 AiP74HCT4052	2路四选一模拟开关 Dual 4-channel Analog Multiplexer/Demultiplexer	VDD: HC:3.0~9.0V HCT:4.5~5.5V VDD-VEE:3.0~9.0V	DIP16 SSOP16 TSSOP16	SOP16
320	AiP74HC4053 AiP74HCT4053	3路二选一模拟开关 Triple 2-channel Analog Multiplexer/Demultiplexer	VDD: HC:3.0~9.0V HCT:4.5~5.5V VDD-VEE:3.0~9.0V	DIP16 TSSOP16	SOP16
321	AiP74HC4066	4路双向开关 Quad Bilateral Switches	3.0~9.0V	DIP14 TSSOP14	SOP14
322	AiP74HC4067	十六选一模拟开关 16-channel Analog Multiplexer/Demultiplexer	3.0~9.0V	SOP24 TSSOP24	
323	AiP74HC4097	2路八选一模拟开关 Dual 8-channel Analog Multiplexer/Demultiplexer	3.0~9.0V	SOP24 TSSOP24	
324	AiP74LV4052	2路四选一模拟开关 Dual 4-channel Analog Multiplexer/Demultiplexer	VDD:1.0~6.0V VDD-VEE:1.0~6.0V	DIP16 TSSOP16	SOP16
325	CD4051 CD4051H	八选一模拟开关 8-channel Analog Multiplexer/Demultiplexer	VDD:3.0~9.0V VDD-VEE:3.0~9.0V VDD:3.0~20.0V(H) VDD-VEE:3.0~20.0V(H)	DIP16 TSSOP16	DHVQFN16 SOP16
326	CD4052 CD4052H	2路四选一模拟开关 Dual 4-channel Analog Multiplexer/Demultiplexer	VDD:3.0~9.0V VDD-VEE:3.0~9.0V VDD:3.0~20.0V(H) VDD-VEE:3.0~20.0V(H)	DIP16 TSSOP16	SOP16
327	CD4053 CD4053H	3路二选一模拟开关 Triple 2-channel Analog Multiplexer/Demultiplexer	VDD:3.0~9.0V VDD-VEE:3.0~9.0V VDD:3.0~20.0V(H) VDD-VEE:3.0~20.0V(H)	DIP16 TSSOP16	SOP16
328	CD4066	4路双向开关 Quad Bilateral Switches	3.0~9.0V	DIP14 TSSOP14	SOP14

显示驱动  
Display Driver

MCU  
Microcontroller Unit

逻辑  
Logic

信号链  
Signal Chain

电源  
Power

电机驱动  
Motor Driver

音频  
Audio

遥控器  
Remote Controller

通信  
Communication

配套  
Supporting



序号 NO.	型号 Part Number	名称及主要特点 Function	工作电压 Voltage Range	封装 Package	
329	CD4067	十六选一模拟开关 16-channel Analog Multiplexer/Demultiplexer	3.0~9.0V	SOP24 TSSOP24	
330	CD4097	2路八选一模拟开关 Dual 8-channel Analog Multiplexer/Demultiplexer	3.0~9.0V	SOP24 TSSOP24	
331	AiP5V330	双向4通道/2选1视频开关 Low On-Resistance Wideband/Video Quad 2-Channel Multiplexer/Demultiplexer	5.0V	SOP16 TSSOP16	SSOP16
332	AiP5V331	双向2通道/4选1视频开关 Low On-Resistance Wideband/Video Dual 4-Channel Multiplexer/Demultiplexer	5.0V	SOP16 TSSOP16	SSOP16
333	AiP5V332	双向4通道/视频开关 Low On-Resistance Wideband/Video Quad with Individual Control	5.0V	SOP16 TSSOP16	SSOP16
334	AiP74LV4053*	3路二选一模拟开关 Triple 2-channel Analog Multiplexer/Demultiplexer	1.0~6.0V	DIP16 TSSOP16	SOP16
335	AiP74LVC1G66	单路双向开关 Bilateral Switch	1.65~5.5V	SOT23-5 SOT353	
336	AiP74LVC1G3157	二选一模拟开关 2-channel Analog Multiplexer/Demultiplexer	1.65~5.5V	SOT23-6 SOT363	
337	AiP74CBTLV3125 <sup>▲</sup>	4路总线开关 4-bit Bus Switch	2.3~3.6V	TSSOP14 DHVQFN14	
338	AiP74CBTLV3126 <sup>▲</sup>	4路总线开关 4-bit Bus Switch	2.3~3.6V	TSSOP14 DHVQFN14	
339	AiP74CBTLV3244 <sup>▲</sup>	每4路带输出使能的8路总线开关 8-bit Bus Switch with 4-bit Output Enables	2.3~3.6V	TSSOP20 DHVQFN20	
340	AiP74CBTLV3245 <sup>▲</sup>	带输出使能的8路总线开关 8-bit Bus Switch with Output Enables	2.3~3.6V	SOP20 DHVQFN20	TSSOP20
341	AiP74CBTLV3251 <sup>▲</sup>	八选一模拟开关 1-of-8 Multiplexer/demultiplexer	2.3~3.6V	SOP16 TSSOP16	SSOP16
342	AiP74CBTLV3253 <sup>▲</sup>	2路四选一模拟开关 Dual 1-of-4 Multiplexer/demultiplexer	2.3~3.6V	SOP16 TSSOP16	SSOP16 DHVQFN16
343	AiP74CBTLV3257	4路二选一模拟开关 Quad 1-of-2 Multiplexer/Demultiplexer	2.3~3.6V	SOP16 TSSOP16	SSOP16 DHVQFN16
344	AiP74CBTLV3384 <sup>▲</sup>	每5路带输出使能的10路总线开关 10-Bit Bus Switch with 5-Bit Output Enables	2.3~3.6V	SOP24 DHVQFN24	TSSOP24
345	AiP74CBTLV3861 <sup>▲</sup>	带输出使能的10路总线开关 10-Bit Bus Switch with Output Enable	2.3~3.6V	SOP24 DHVQFN24	TSSOP24
346	AiPTS3A4741*	0.9 Ω 低电压单电源2路模拟开关 0.9-Ω Low-Voltage Single-Supply 2-Channel SPST Analog Switches	1.6~3.6V	VSSOP8	
347	AiPTS3A4742*	0.9 Ω 低电压单电源2路模拟开关 0.9-Ω Low-Voltage Single-Supply 2-Channel SPST Analog Switches	1.6~3.6V	VSSOP8	
348	AiPTS3A5223*	0.45 Ω 2路二选一双向模拟开关 0.45-Ω 2-Channel SPDT Bidirectional Analog Switch	1.65~3.6V	QFN10	
349	AiPTS3A24157*	0.65 Ω 2路二选一双向模拟开关 0.65-Ω 2-Channel SPDT Analog Switch	1.65~3.6V	QFN10	
<b>(九) 4000系列/4000 Series</b>					
350	CD4000 <sup>▲</sup> CD4000H <sup>▲</sup>	2路3输入或非门与反相器 Dual 3-input Nor Gate and Inverter	3.0~15.0V 3.0~20.0V(H)	DIP14 TSSOP14	SOP14
351	CD4001 CD4001H <sup>▲</sup>	4路2输入或非门 Quad 2-input Nor Gate	3.0~15.0V 3.0~20.0V(H)	DIP14 TSSOP14	SOP14
352	CD4002 <sup>▲</sup> CD4002H <sup>▲</sup>	2路4输入或非门 Dual 4-input Nor Gate	3.0~15.0V 3.0~20.0V(H)	DIP14 TSSOP14	SOP14
353	CD4011 CD4011H <sup>▲</sup>	4路2输入与非门 Quad 2-input Nand Gate	3.0~15.0V 3.0~20.0V(H)	DIP14 TSSOP14	SOP14
354	CD4012 CD4012H <sup>▲</sup>	2路4输入与非门 Dual 4-input Nand Gate	3.0~15.0V 3.0~20.0V(H)	DIP14 TSSOP14	SOP14
355	CD4013	2路D型触发器 Dual D-type Flip-flop	3.0~15.0V	DIP14 TSSOP14	SOP14
356	CD4017	5阶Johnson译码计数器 5-stage Johnson Decade Counter	3.0~15.0V	DIP16 TSSOP16	SOP16

# i-CORE contents

产品目录

序号 NO.	型号 Part Number	名称及主要特点 Function	工作电压 Voltage Range	封装 Package
357	CD4020	14位二进制计数器 14-stage Binary Counter	3.0~15.0V	DIP16 TSSOP16 SOP16
358	CD4021	8位移位寄存器 8-bit Static Shift Register	3.0~15.0V	DIP16 TSSOP16 SOP16
359	CD4023 CD4023H <sup>▲</sup>	3路3输入与非门 Triple 3-input Nand Gate	3.0~15.0V 3.0~20.0V(H)	DIP14 TSSOP14 SOP14
360	CD4024	7位二进制计数器 7-stage Binary Counter	3.0~15.0V	DIP14 TSSOP14 SOP14
361	CD4025 CD4025H <sup>▲</sup>	3路3输入与非门 Triple 3-input Nand Gate	3.0~15.0V 3.0~20.0V(H)	DIP14 TSSOP14 SOP14
362	CD4026	BCD转7段译码管 BCD to 7-segment Decoder	3.0~15.0V	DIP16 TSSOP16 SOP16
363	CD4027	2路JK触发器 Dual JK Flip-Flop	3.0~15.0V	DIP16 TSSOP16 SOP16
364	CD4028	BCD转10进制译码电路 BCD to Decimal Decoder	3.0~15.0V	DIP16 TSSOP16 SOP16
365	CD4030 CD4030H <sup>▲</sup>	4路2输入异或门 Quad 2-input Exclusive-or Gate	3.0~15.0V 3.0~20.0V(H)	DIP14 TSSOP14 SOP14
366	CD4043	4路带三态输出的R/S锁存器 Quad R/S Latch with 3-state Outputs	3.0~15.0V	DIP16 TSSOP16 SOP16
367	CD4044 <sup>▲</sup>	4路带三态输出的R/S锁存器 Quad R/S Latch with 3-state Outputs	3.0~15.0V	DIP16 TSSOP16 SOP16
368	CD4051 CD4051H	八选一模拟开关 8-channel Analog Multiplexer/Demultiplexer	VDD:3.0~9.0V VDD-VEE:3.0~9.0V VDD:3.0~20.0V(H) VDD-VEE:3.0~20.0V(H)	DIP16 TSSOP16 DHVQFN16 SOP16
369	CD4052 CD4052H	2路四选一模拟开关 Dual 4-channel Analog Multiplexer/Demultiplexer	VDD:3.0~9.0V VDD-VEE:3.0~9.0V VDD:3.0~20.0V(H) VDD-VEE:3.0~20.0V(H)	DIP16 TSSOP16 SOP16
370	CD4053 CD4053H	3路二选一模拟开关 Triple 2-channel Analog Multiplexer/Demultiplexer	VDD:3.0~9.0V VDD-VEE:3.0~9.0V VDD:3.0~20.0V(H) VDD-VEE:3.0~20.0V(H)	DIP16 TSSOP16 SOP16
371	CD4060	带时钟的14阶二进制纹波计数器/分配器 14-stage Ripple-carry Binary Counter/Divider and Oscillator	3.0~15.0V	DIP16 TSSOP16 SOP16
372	CD4066 CD4066H <sup>▲</sup>	4路双向开关 Quad Bilateral Switches	3.0~15.0V 3.0~20.0V(H)	DIP14 TSSOP14 SOP14
373	CD4067	十六选一模拟开关 16-channel Analog Multiplexer/Demultiplexer	3.0~9.0V	SOP24 TSSOP24
374	CD4068 CD4068H <sup>▲</sup>	8输入与门/与非门 8-input And Gate/Nand Gate	3.0~15.0V 3.0~20.0V(H)	DIP14 TSSOP14 SOP14
375	CD4069 CD4069H <sup>▲</sup>	6路反相器 Hex Inverter	3.0~15.0V 3.0~20.0V(H)	DIP14 TSSOP14 SOP14
376	CD4070 CD4070H <sup>▲</sup>	4路2输入异或门 Quad 2-input Exclusive-or Gate	3.0~15.0V 3.0~20.0V(H)	DIP14 TSSOP14 SOP14
377	CD4071 CD4071H <sup>▲</sup>	4路2输入或门 Quad 2-input Or Gate	3.0~15.0V 3.0~20.0V(H)	DIP14 TSSOP14 SOP14
378	CD4072 <sup>▲</sup> CD4072H <sup>▲</sup>	2路4输入或门 Dual 4-input Or Gate	3.0~15.0V 3.0~20.0V(H)	DIP14 TSSOP14 SOP14
379	CD4073 CD4073H <sup>▲</sup>	3路3输入与门 Triple 3-input And Gate	3.0~15.0V 3.0~20.0V(H)	DIP14 TSSOP14 SOP14
380	CD4075 CD4075H <sup>▲</sup>	3路3输入或门 Triple 3-input Or Gate	3.0~15.0V 3.0~20.0V(H)	DIP14 TSSOP14 SOP14
381	CD4077 <sup>▲</sup> CD4077H <sup>▲</sup>	4路2输入同或门 Quad 2-input Exclusive-Nor Gate	3.0~15.0V 3.0~20.0V(H)	DIP14 TSSOP14 SOP14

显示驱动  
Display Driver

MCU  
Microcontroller Unit

逻辑  
Logic

信号链  
Signal Chain

电源  
Power

电机驱动  
Motor Driver

音频  
Audio

遥控器  
Remote Controller

通信  
Communication

配套  
Supporting

# i-CORE contents

产品目录

序号 NO.	型号 Part Number	名称及主要特点 Function	工作电压 Voltage Range	封装 Package
382	CD4078 <sup>▲</sup> CD4078H <sup>▲</sup>	8输入或门/或非门 8-input Or Gate/Nor Gate	3.0~15.0V 3.0~20.0V(H)	DIP14 SOP14 TSSOP14
383	CD4081 CD4081H <sup>▲</sup>	4路2输入与门 Quad 2-input And Gate	3.0~15.0V 3.0~20.0V(H)	DIP14 SOP14 TSSOP14
384	CD4082 CD4082H <sup>▲</sup>	2路4输入与门 Dual 4-input And Gate	3.0~15.0V 3.0~20.0V(H)	DIP14 SOP14 TSSOP14
385	CD4085 <sup>▲</sup> CD4085H <sup>▲</sup>	2路2输入与或非门 Dual 2-input And-Or-Invert Gate	3.0~15.0V 3.0~20.0V(H)	DIP14 SOP14 TSSOP14
386	CD4093 CD4093H <sup>▲</sup>	4路2输入施密特与非门 Quad 2-input Nand Schmitt Gate	3.0~15.0V 3.0~20.0V(H)	DIP14 SOP14 TSSOP14
387	CD4094	8阶移位锁存总线寄存器 8-stage Shift-and-store Bus Register	3.0~15.0V	DIP16 SOP16 TSSOP16
388	CD4097	2路八选一模拟开关 Dual 8-channel Analog Multiplexer/Demultiplexer	3.0~9.0V	SOP24 TSSOP24
389	CD4518	2路BCD计数器 Dual BCD Counter	3.0~15.0V	DIP16 SOP16 TSSOP16
390	CD4520	2路二进制计数器 Dual Binary Counter	3.0~15.0V	DIP16 SOP16 TSSOP16
391	CD4528	2路单稳态多频振荡器 Dual Monostable Multivibrator	3.0~12.0V	DIP16 SOP16 TSSOP16
392	CD4538	2路高精度单稳态多频振荡器 Dual Precision Monostable Multivibrator	3.0~12.0V	DIP16 SOP16 TSSOP16
393	CD4543	BCD转7段锁存器/译码器/驱动器 BCD to 7-segment Latch/Decoder/Driver	3.0~15.0V	DIP16 SOP16 TSSOP16
394	CD4556	2路2-4译码器/信号分离器 Dual 1-of-4 Decoder/Demultiplexer	3.0~15.0V	DIP16 SOP16 TSSOP16
395	CD4584	6路施密特触发器 Hex Schmitt Trigger	3.0~15.0V	DIP14 SOP14 TSSOP14
396	CD4585	4位比较器 4-bit Magnitude Comparator	3.0~15.0V	DIP16 SOP16 TSSOP16
397	CD40106 CD40106H	6路施密特反相器 Hex Inverting Schmitt Trigger	3.0~15.0V 3.0~20.0V(H)	DIP14 SOP14 TSSOP14
398	CD40174	6路D型触发器 Hex D-type Flip-flop	3.0~15.0V	DIP16 SOP16 TSSOP16
399	CD40175	4路D型触发器 Quad D-type Flip-flop	3.0~15.0V	DIP16 SOP16 TSSOP16
400	CD40192	异步置数BCD加减计数器 Presettable BCD Decade Up/Down Counter	3.0~15.0V	DIP16 SOP16 TSSOP16
401	CD40193	4位递增/递减二进制计数器 4-bit Up/Down Binary Counter	3.0~15.0V	DIP16 SOP16 TSSOP16

# i-CORE contents

产品目录

序号 NO.	型号 Part Number	名称及主要特点 Function	工作电压 Voltage Range	封装 Package
-----------	-------------------	---------------------	-----------------------	---------------

## 四、信号链/Signal Chain

(一) 通用运算放大器/General-purpose OP AMPS				
1	AiP321/221	单通道运算放大器 Single Operational Amplifiers	$\pm 1.5\sim\pm 18V$	SOT23-5
2	AiP321L	单通道运算放大器 Single Operational Amplifier	$\pm 1.5\sim\pm 9V$	SOT23-5
3	AiP321LV	单通道轨到轨运算放大器 Single Rail-to-Rail Operational Amplifier	2.5~5.5V	SOT23-5
4	AiP358/258/2904 AiP358S	双通道运算放大器 Dual Operational Amplifiers	$\pm 1.5\sim\pm 18V$	DIP8 MSOP8 SOP8 TSSOP8
5	AiP358L	双通道运算放大器 Dual Operational Amplifier	$\pm 1.5\sim\pm 9V$	DIP8 MSOP8 SOP8 TSSOP8
6	AiP358LV	双通道轨到轨运算放大器 Dual Rail-to-Rail Operational Amplifier	2.5~5.5V	SOP8 MSOP8 TSSOP8
7	AiP324/224/2902 AiP324S	四通道运算放大器 Quad Operational Amplifiers	$\pm 1.5\sim\pm 18V$	DIP14 TSSOP14 SOP14
8	AiP324L	四通道运算放大器 Quad Operational Amplifier	$\pm 1.5\sim\pm 9V$	DIP14 TSSOP14 SOP14
9	AiP324LV	四通道轨到轨运算放大器 Quad Rail-to-Rail Operational Amplifier	2.5~5.5V	SOP14 TSSOP14
10	AiP061	单通道低功耗JFET运算放大器 Single Low Power JFET Operational Amplifier	$\pm 5\sim\pm 18V$	DIP8 MSOP8 SOP8 TSSOP8
11	AiP062	双通道低功耗JFET运算放大器 Dual Low Power JFET Operational Amplifier	$\pm 5\sim\pm 18V$	DIP8 MSOP8 SOP8 TSSOP8
12	AiP064	四通道低功耗JFET运算放大器 Quad Low Power JFET Operational Amplifier	$\pm 5\sim\pm 18V$	DIP14 TSSOP14 SOP14
13	AiP9272 AiP9274	低功耗运算放大器 Quad Microampera Power Differential Comparator	1.6~5.5V	DIP8 TSSOP8 SOP8 SOP14 DIP14
14	AiP1330	极低工作电压的双通道CMOS运算放大器电路 Ultra-Small Low Voltage Operation CMOS Dual Operational Amplifierr	1.8~5.5V	SOP8 MSOP8 TSSOP14
15	AiP8651*	单通道纳安功耗轨到轨运算放大器 Single Nanoampera Power Rail-to-Rail Operational Amplifier	1.8~5.5V	SOT23-5
16	AiP8652*	双通道纳安功耗轨到轨运算放大器 Dual Nanoampera Power Rail-to-Rail Operational Amplifier	1.8~5.5V	SOP8 MSOP8
17	AiP8654*	四通道纳安功耗轨到轨运算放大器 Quad Nanoampera Power Rail-to-Rail Operational Amplifier	1.8~5.5V	SOP14 TSSOP14
18	AiP8721*	单通道低噪声轨到轨运算放大器 Single Low Noise Rail-to-Rail Operational Amplifier	2.2~5.5V	SOT23-5
19	AiP8722*	双通道低噪声轨到轨运算放大器 Dual Low Noise Rail-to-Rail Operational Amplifier	2.2~5.5V	SOP8 MSOP8
20	AiP8724*	四通道低噪声轨到轨运算放大器 Quad Low Noise Rail-to-Rail Operational Amplifier	2.2~5.5V	SOP14 TSSOP14
(二) 音频运算放大器/Audio OP AMPS				
21	AiP4580 AiP4580S	双通道低噪声运算放大器 Dual Low-Noise Operational Amplifiers	$\pm 2\sim\pm 18V$	DIP8 MSOP8 SOP8 SSOP8
22	AiP4558 AiP4558S	双通道低噪声运算放大器 Dual Low-Noise Operational Amplifiers	$\pm 1.5\sim\pm 18V$	SOP8 DIP8 SIP8 SOP8W

显示驱动  
Display Driver

MCU  
Microcontroller Unit

逻辑  
Logic

信号链  
Signal Chain

电源  
Power

电机驱动  
Motor Driver

音频  
Audio

遥控器  
Remote Controller

通信  
Communication

配套  
Supporting

序号 NO.	型号 Part Number	名称及主要特点 Function	工作电压 Voltage Range	封装 Package
23	AiP4558L	双通道低噪声运算放大器 Dual Low-Noise Operational Amplifier	$\pm 1.5\sim\pm 9V$	SOP8 SIP8 DIP8 SOP8W
24	AiP5532*	双通道低噪声运算放大器 Dual Low-Noise Operational Amplifier	$\pm 3\sim\pm 18V$	DIP8 SOP8 MSOP8 SSOP8
<b>(三) 高速运算放大器/High-speed OP AMPS</b>				
25	AiP8051*	单通道250MHz轨到轨运算放大器 Single 250MHz Rail-to-Rail Operational Amplifier	2.5~5.5V	SOT23-5
26	AiP8052*	双通道250MHz轨到轨运算放大器 Dual 250MHz Rail-to-Rail Operational Amplifier	2.5~5.5V	SOP8 MSOP8
27	AiP8054*	四通道250MHz轨到轨运算放大器 Quad 250MHz Rail-to-Rail Operational Amplifier	2.5~5.5V	SOP14 TSSOP14
<b>(四) 精密运算放大器/Precision OP AMPS</b>				
28	AiP07*	单通道高精度运算放大器 Single High Precision Operational Amplifier	$\pm 3.0\sim\pm 18V$	DIP8 SOP8 MSOP8 TSSOP8
29	AiP8551*	单通道零漂移轨到轨运算放大器 Single Zero Drift Rail-to-Rail Operational Amplifier	1.8~5.5V	SOT23-5
30	AiP8552*	双通道零漂移轨到轨运算放大器 Dual Zero Drift Rail-to-Rail Operational Amplifier	1.8~5.5V	SOP8 MSOP8
31	AiP8554*	四通道零漂移轨到轨运算放大器 Quad Zero Drift Rail-to-Rail Operational Amplifier	1.8~5.5V	SOP14 TSSOP14
<b>(五) 电流检测运算放大器/Current sense amplifiers</b>				
32	AiP8199	零漂移双向电流检测放大器 Zero-Drift, Bi-directional Current Sense Amplifier	2.7~30V	SOT363
33	AiP8181	零漂移双向电流检测放大器 Zero-Drift, Bi-directional Current Sense Amplifier	2.7~5.5V	SOT23-6
<b>(六) 比较器/Comparators</b>				
34	AiP393/293/2903	双通道差分比较器 Dual Differential Comparators	$\pm 1\sim\pm 18V$	DIP8 SOP8 MSOP8 TSSOP8
35	AiP393L	双通道差分比较器 Dual Differential Comparator	$\pm 1\sim\pm 9V$	DIP8 SOP8 MSOP8 TSSOP8
36	AiP339/239/2901	四通道差分比较器 Quad Differential Comparators	$\pm 1\sim\pm 18V$	DIP14 SOP14 TSSOP14
37	AiP339L	四通道差分比较器 Quad Differential Comparator	$\pm 1\sim\pm 9V$	DIP14 SOP14 TSSOP14
38	AiP211*/AiP311*	单通道高速差分比较器 Single High-speed Differential Comparators	$\pm 1.5\sim\pm 18V$	DIP8 SOP8 MSOP8 TSSOP8
39	AiP3201*	单通道高速低功耗差分比较器 Single High-speed Low Power Differential Comparator	2.7~5.5V	SOT23-5
40	AiP3202*	双通道高速低功耗差分比较器 Single High-speed Low Power Differential Comparator	2.7~5.5V	SOP8 MSOP8
41	AiP3204*	四通道高速低功耗差分比较器 Quad High-speed Low Power Differential Comparator	2.7~5.5V	SOP14 TSSOP14

# i-CORE contents

产品目录

序号 NO.	型号 Part Number	名称及主要特点 Function	工作电压 Voltage Range	封装 Package
-----------	-------------------	---------------------	-----------------------	---------------

## 五、电源/Power

### (一) 线性稳压器&电压参考/LDO&Voltage References

1	AiP78L05/09/12/15	100mA正电源稳压器 100mA Positive-Voltage Linear Regulators	7~36V	TO92 SOT23-3 SOT89
2	AiP78M05/08/09/12/15	500mA正电源稳压器 500mA Positive-Voltage Linear Regulators	7~36V	TO252 TO220
3	AiP7805/06/08/09/12/15/24	1A正电源稳压器 1A Positive-Voltage Linear Regulators	7~36V	TO220 TO252 TO263
4	AiP79M05/08/12/15	500mA负电源稳压器 500mA Negative-Voltage Linear Regulators	-7~-36V	TO252 TO220
5	AiP7905/08/12/15	1A负电源稳压器 1A Negative-Voltage Linear Regulators	-7~-36V	TO220 TO263
6	AiP1117-ADJ/1.8/3.3/5	800mA低压差正电源稳压器 800mA Low-Dropout Linear Regulators	2.7~15V	SOT223 TO252
7	AiP71XX*	30mA输出电压调整电路 30mA Output High Driver Regulator	5~24V	TO-92 SOT-89
8	AiP75XX	100mA输出电压调整电路 100mA Output High Driver Regulator	5~30V	TO-92 SOT-89
9	AiP73XX*	250mA输出电压调整电路 250mA Output High Driver Regulator	5~24V	TO-92 SOT-89
10	AiP76XX	300mA低压差稳压器 300mA Low-Dropout Linear Regulator	2.5~5.5V	SOT23-5
11	AiP317	1.5A低压差可调电压调整器 1.5A Low-Dropout Adjustable Regulator	3~37V	TO220
12	AiP431/A/B AiP432/A/B	精度为1%、0.5%、2%的可调精密并联稳压器 Adjustable Precision Shunt Regulators(Precision=1%, 0.5%, 2%)	2.5~36V	SOP8 SOT23-3 DIP8 SOT23-5 TO92

### (二) 电池管理/Battery Management

13	AiP4700	6节锂离子和锂磷酸盐电池管理监控器 6-Series Cell Battery Monitor for Li-Ion and Phosphate	2.5V/3.3V	TSSOP20
14	AiP4701	10节锂离子和锂磷酸盐电池管理监控器 10-Series Cell Battery Monitor for Li-Ion and Phosphate	2.5V/3.3V	TSSOP30
15	AiP4702	18节锂离子和锂磷酸盐电池管理监控器 18-Series Cell Battery Monitor for Li-Ion and Phosphate	2.5V/3.3V	TSSOP48
16	AiP4054/F	500mA线性锂电池充电器 500mA Standalone Linear Li-Ion Battery Charger with Thermal Regulation	4.25~5.5V	SOT23-5
17	AiP4054H*	500mA线性锂电池充电器 500mA Standalone Linear Li-Ion Battery Charger with Thermal Regulation	4.25~28V	SOT23-5
18	AiP4056	1A线性锂电池充电器 1A Standalone Linear Li-Ion Battery Charger with Thermal Regulation	4.25~5.5V	ESOP8
19	AiP4056H*	1A线性锂电池充电器 1A Standalone Linear Li-Ion Battery Charger with Thermal Regulation	4.25~28V	ESOP8
20	AiP4060*	300mA线性锂电池充电器 300mA Standalone Linear Li-Ion Battery Charger with Thermal Regulation	4.5~5.5V	DFN6

### (三) DC-DC

21	AiP3002*	500mA同步BOOST DC/DC调节器 500mA Synchronous Boost DC/DC Regulator	1.0~4.4V	SOT23-6
----	----------	--	----------	---------

显示驱动  
Display Driver

MCU  
Microcontroller Unit

逻辑  
Logic

信号链  
Signal Chain

电源  
Power

电机驱动  
Motor Driver

音响  
Audio

遥控器  
Remote Controller

通信  
Communication

配套  
Supporting

# i-CORE contents

产品目录

序号 NO.	型号 Part Number	名称及主要特点 Function	工作电压 Voltage Range	封装 Package
22	AiP4004A	低噪声电荷泵DC/DC转换电路 Low-Noise, Regulated Charge Pump DC/DC Converter	2.5~5.5V	SOT23-6
<b>(四) 电源监控/ Voltage Detector</b>				
23	AiP706	带看门狗功能的微处理器复位电路 Microprocessor Reset Circuit with Watchdog Controller	1.0~5.5V	DIP8 SOP8
24	AiP708 <sup>▲</sup>	带看门狗功能的微处理器复位电路 Microprocessor Reset Circuit with Watchdog Controller	1.0~5.5V	DIP8 SOP8
25	AiP803/AiP809/AiP810	微处理器复位电路 Microprocessor Reset Circuits	1.0~5.5V	SOT23-3
26	AiP811/AiP812	微处理器复位电路 Microprocessor Reset Circuits	1.0~5.5V	SOT23-4
27	AiP3823/AiP823 <sup>▲</sup>	微处理器复位电路 Microprocessor Reset Circuits	1.0~5.5V	SOT23-5
28	AiP7033 AiP7042	电压检测电路 Voltage Detector Circuits	0~15.0V	TO92 SOT89-3
<b>(五) PWM控制器/ PWM Controller</b>				
29	AiP3842/2842	电流模式PWM控制器, 输出占空比<100% Current-Mode PWM Controllers, MAX Output Duty Cycle <100%	16~30V	DIP8 SOP8
30	AiP3843/2843	电流模式PWM控制器, 输出占空比<100% Current-Mode PWM Controllers, MAX Output Duty Cycle <100%	8.4~30V	DIP8 SOP8
31	AiP3844/2844	电流模式PWM控制器, 输出占空比<50% Current-Mode PWM Controllers, MAX Output Duty Cycle <50%	16~30V	DIP8 SOP8
32	AiP3845/2845	电流模式PWM控制器, 输出占空比<50% Current-Mode PWM Controllers, MAX Output Duty Cycle <50%	8.4~30V	DIP8 SOP8
33	AiP494	PWM控制器 PWM Controller	7~40V	SOP16 DIP16 TSSOP16
34	AiP3637	PWM控制型直流马达驱动 PWM Controller for DC Motor Driver	±2.5~±20V	SOP20 DIP18
<b>(六) 漏电保护/Earth Leakage Current Protector</b>				
35	AiP54123	高速漏电保护电路 High-Speed Earth Leakage Current Protector	12~20V	SOP8 DIP8 SIP8
36	AiP54123A*	高速漏电保护电路 High-Speed Earth Leakage Current Protector	4.5~5.5V	SOP8 DIP8 SIP8

# i-CORE contents

产品目录

序号 NO.	型号 Part Number	名称及主要特点 Function	工作电压 Voltage Range	封装 Package
-----------	-------------------	---------------------	-----------------------	---------------

## 六、电机驱动/Motor Driver

### (一) H桥驱动/ H Bridge Drivers

1	L9110S	直流电机H桥驱动电路 DC Motor H Bridge Driver	2.0~5.5V	SOP8 TSSOP8	DFN8
2	AiP6150	0.7A直流电机H桥驱动电路 0.7A DC Motor H Bridge Driver	VDD : 3.0~5.5V VM : 8.0~20V	SOP8	
3	AiP6150H	0.7A直流电机H桥驱动电路 0.7A DC Motor H Bridge Driver	VDD : 3.0~5.5V VM : 8.0~24V	SOP8	
4	AiP6151	1.0A直流电机H桥驱动电路 1.0A DC Motor H Bridge Driver	VDD : 3.0~5.5V VM : 8.0~20V	ESOP8	
5	AiP6151H	1.0A直流电机H桥驱动电路 1.0A DC Motor H Bridge Driver	VDD : 3.0~5.5V VM : 8.0~24V	ESOP8	
6	AiP6189	3A单通道直流马达驱动 3A Single-CH DC Motor Driver	3~13V	SOP8	
7	AiP6208	双向马达驱动电路 Motor Driver Circuit	4.5~5V	SOP8	
8	AiP6133	双通道H桥电机驱动 2 CH DC Motor H Bridge Driver	2.7~10.8V	QFN16 eTSSOP16	
9	AiP6137	低压H桥电机驱动 Low Voltage DC Motor H Bridge Driver	1.8~11V	WSO8	

### (二) 栅驱动器/Gate Drivers

10	AiP2103	500V耐压200mA峰值电流的半桥栅极驱动电路 500V Half-Bridge Driver with 200mA Peak Current	$V_{CC} : 10\sim 20V$ $V_B : (V_S + 10 \sim V_S + 20)V$ $V_S : 0\sim 500V$	DIP8 SOP8	
11	AiP2110*	500V耐压2A峰值电流带SD使能端的半桥栅极驱动电路 500V Half-Bridge Gate Driver with 2A Peak Current, SD Enable Port	$V_{DD} : 3\sim 20V$ $V_{CC} : 10\sim 20V$ $V_B : (V_S + 10 \sim V_S + 20)V$ $V_S : 0\sim 500V$	DIP14 SOP16	
12	AiP2130	500V三相桥式驱动电路 500V 3-Phase Bridge Driver	$V_{CC} : 10V\sim 20V$ $V_{H1,2,3} : (V_{H1,2,3} + 10V) \sim (V_{H1,2,3} + 20V)$ $V_{S1,2,3} : 0\sim 500V$	DIP28	
13	AiP2119	90V三相桥式驱动电路 90V 3-Phase Bridge Driver	$V_{CC} : 10\sim 18V$ $V_B : (V_S + 10 \sim V_S + 18)V$ $V_S : 0\sim 90V$	TSSOP20 TSSOP24	
14	AiP2163	90V高压半桥驱动电路 90V Half-Bridge Driver	$V_{CC} : 10\sim 18V$ $V_B : (V_S + 10 \sim V_S + 18)V$ $V_S : 0\sim 90V$	SOP8	
15	AiP2164*	225V高压半桥驱动电路 225V Half-Bridge Driver	$V_{CC} : 10\sim 20V$ $V_B : (V_S + 10 \sim V_S + 20)V$ $V_S : 0\sim 225V$	SOP8	
16	AiP4420/AiP4429	6A高速MOSFET驱动器 6A High-Speed MOSFET Drivers	4.5~18.0V	SOP8	
17	AiP4421/AiP4422	9A高速MOSFET驱动器 9A High-Speed MOSFET Drivers	4.5~18.0V	SOP8	
18	AiP4423/AiP4424/AiP4425	3A高速MOSFET驱动器 3A High-Speed MOSFET Drivers	4.5~18.0V	SOP8	

显示驱动  
Display Driver

MCU  
Microcontroller Unit

逻辑  
Logic

信号链  
Signal Chain

电源  
Power

电机驱动  
Motor Driver

音响  
Audio

遥控器  
Remote Controller

通信  
Communication

配套  
Supporting



# i-CORE contents

产品目录

序号 NO.	型号 Part Number	名称及主要特点 Function	工作电压 Voltage Range	封装 Package
19	AiP4426/AiP4427/AiP4428	1.5A高速MOSFET驱动器 1.5A High-Speed MOSFET Drivers	4.5~18.0V	SOP8
<b>(三) 达林顿晶体管阵列&amp;继电器、步进电机驱动/ Darlington Arrays &amp; Outputs Driver for Relay or Stepper Motor</b>				
20	AiP2000	内置3端稳压器2通道达林顿晶体管阵列 2 CH Darlington Arrays with 3-end Voltage Stabilizer	0~30V	SOP8
21	AiP2001	3通道达林顿晶体管阵列 3 CH Darlington Arrays	0~50V	DIP8 SOP8
22	AiP2002	5通道达林顿晶体管阵列 5 CH Darlington Arrays	0~50V	DIP14 TSSOP14 SOP14
23	AiP2003	7通道达林顿晶体管阵列 7 CH Darlington Arrays	0~50V	DIP16 TSSOP16 SOP16
24	AiP2003L	7通道达林顿晶体管阵列 7 CH Darlington Arrays	0~40V	DIP16 TSSOP16 SOP16
25	AiP2603	内置3端稳压器6通道达林顿晶体管阵列 6 CH Darlington Arrays with 3-end Voltage Stabilizer	0~30V	SOP16 TSSOP16
26	AiP2803	8通道达林顿晶体管阵列 8 CH Darlington Arrays	0~50V	DIP18 TSSOP20 SOP18
27	AiP2803L	8通道达林顿晶体管阵列 8 CH Darlington Arrays	0~40V	DIP18 TSSOP20 SOP18
28	AiP2803LS	8通道达林顿晶体管阵列 8 CH Darlington Arrays	0~15V	SOP18 TSSOP20
29	AiP6120	2线通讯/10路输出家电用继电器/步进电机专用驱动器 2-line Serial Interface/10 Outputs Driver for Relay or Stepper Motor	2.7~5.5V	SOP16
30	AiP6121 <sup>▲</sup>	2线通讯/3路输出家电用继电器/步进电机专用驱动器 2-line Serial Interface/3 Outputs Driver for Relay or Stepper Motor	2.7~5.5V	SOP8

# i-CORE contents

产品目录

序号 NO.	型号 Part Number	名称及主要特点 Function	工作电压 Voltage Range	封装 Package
-----------	-------------------	---------------------	-----------------------	---------------

## 七、音响类/Audio

### (一) 音质、音效处理电路/Audio Processors

1	TC9153 CD9153	电子音量控制器 Electronic Volume Controllers	6.0~12.0V	DIP16
2	CD2256 CD9235	电子音量控制器 Electronic Volume Controllers	4.5~10.0V	DIP16 SOP16
3	M62429 CD62429	串行数据控制的双声道电子音量控制器 Serial Control Dual Electronic Volume Controllers	4.0~6.0V	DIP8 SOP8
4	M62429L CD62429L	串行数据控制的双声道电子音量控制器 Serial Control Dual Electronic Volume Controllers	3.0~5.5V	DIP8 SOP8
5	AiP1115	带四输入选择器的2.1声道音量控制电路 2.1 CH Electronic Volume Controller with 4 Input Selector	3.0~9.0V	DIP16 SOP16
6	CD3312	四声道音频处理器 4 CH Audio Processor	6.0~10.0V	SOP32
7	CD3313	带音调和音量处理的数控四声道音频处理器 Digital Controlled Stereo Audio Processor with Tone and Volume Processor	6.0~10.0V	DIP28 SSOP28
8	CD3313L	带音调和音量处理的数控四声道音频处理器 Digital Controlled Stereo Audio Processor with Tone and Volume Processor	3.0~6.0V	SOP28 SSOP28
9	CD3314	四声道音频处理器 4 CH Input Audio Processor	6.0~10.0V	DIP28 SSOP28
10	CD3314L	四声道音频处理器 4 CH Input Audio Processor	3.0~6.0V	SOP28 SSOP28 TSSOP28
11	CD3315	二声道音频处理器 2 CH Audio Processor	6.0~10.0V	DIP20 SOP20
12	CD2258	六声道音量控制器 6 CH Electronic Volume Controller	5.0~10.0V	DIP20 SOP20
13	AiP2358	带输入选择的6声道音量控制器 6 CH Electronic Volume Controller with Input Selector	5.0~10.0V	DIP28 SOP28
14	AiP15902	带四输入选择器的6通道音质处理器 6 CH Electronic Volume Controller with 4 Input Selectors	8.0~10.0V	LQFP44
15	CD2399	混响处理器芯片 Echo Processor	3.3~5.5V	DIP16 SOP16
16	CD65831	麦克风混响音效处理器 Echo Processor for Microphones in Karaoke Systems	4.5~5.5V	SOP24
17	CD7388	五种预置模式均衡器电路 Equalizer with 5 Preset Modes	5.0~11.0V	SKDIP24 SOP24
18	AiP1279	带回声处理四声道AB类音频功放 4 CH Class-AB Audio Power Amplifier with Echo Processor	2.7~5.5V	QFN32
19	AiP1280	带回声处理两声道AB类音频功放 2 CH Class-AB Audio Power Amplifier with Echo Processor	2.7~5.5V	SSOP24

### (二) 音频功放电路/Audio Power Amp

20	AiP4809	低电平关机模式的140mW 耳机功放电路 140mW Headphone Amplifier with Active Low Shutdown Mode	2.0~5.5V	MSOP8
21	AiP9722A/B	带关断的差分输入5V130mW立体声直驱耳机功放 5V Differential Input Direct Drive, 130mW Stereo Headphone Amplifiers with Shutdown	2.4~5.5V	TSSOP16 QFN16
22	AiP97220*	差分输入线驱/耳机直驱功放 Differential Input Direct Drive Line Drivers/Headphone Amplifiers	2.5~5.5V	QFN16
23	AiP2112	增益可调的音频驱动电路 Audio Driver with Adjustable Gain	3.0~3.6V	TSSOP14

显示驱动  
Display Driver

MCU  
Microcontroller Unit

逻辑  
Logic

信号链  
Signal Chain

电源  
Power

电机驱动  
Motor Driver

音响  
Audio

遥控器  
Remote Controller

通信  
Communication

配套  
Supporting

# i-CORE contents

产品目录

序号 NO.	型号 Part Number	名称及主要特点 Function	工作电压 Voltage Range	封装 Package
24	GW2308	双通道AB类音频功率放大电路 Dual Class-AB Audio Power Amplifier	2.7~5.5V	SOP8
25	CS4863	2.2W带立体声耳机功能的AB类双音频功率放大器 Dual 2.2W Class-AB Power Amplifier With Stereo Headphone Function	2.0~5.5V	DIP16 TSSOP20
26	AiP8002	2W带关断模式的AB类音频功率放大器 2W Class-AB Audio Power Amplifier with Shutdown Mode	2.0~5.5V	DIP8 SOP8
27	AiP8004	4W带关断模式的AB类音频功率放大器 4W Class-D Audio Power Amplifier with Shutdown Mode	2.0~5.5V	MSOP8 ESOP8
28	CS4871	3W带关断模式的AB类音频功率放大器 3W Class-AB Audio Power Amplifier with Shutdown Mode	2.0~5.0V	DIP8 SOP8
29	AiP4890	2W带关断模式的音频功率放大器 2W Audio Power Amplifier with Shutdown Mode	2.0~5.5V	MSOP8 SOP8
30	AiP9971	5W AB/D类可选式音频功率放大器 5W Class-AB/D Optional Audio Power Amplifier	2.0~5.0V	MSOP8 ESOP8
31	AiP1350	4W D类可选式音频功率放大器 4W Class-D Optional Audio Power Amplifier	2.0~5.0V	SOP8 DIP8
32	AiP1351	3W D类可选式音频功率放大器 3W Class-D Optional Audio Power Amplifier	2.0~5.0V	ESOP8
33	AiP1370*	带功率限制的2×20W D类立体声放大器 2×20W Stereo Class-D Audio Amplifier with Power Limit	4.5~26V	MSOP8 ESOP8
<b>(三) 音频配套电路/Other ICs</b>				
34	CD3207	BBD1024级低压低噪声音响信号延时电路 1024-Stage Low Voltage Operation, Low-Noise BBD for Analog Signal Delays	4.0~10.0V	DIP8
35	CD3102	BBD低压时钟发生/驱动电路 CMOS Clock Generator/Driver For Low Voltage Operation BBD	4.0~10.0V	DIP8
36	CD3610	频率及时钟显示驱动电路 LCD Driver for Radio Signal Frequency Receive	2.2~3.3V	DIE COB
37	BU1924	数据广播系统解码器 RDS / RBDS Decoder	4.5~5.5V	SOP16

# i-CORE contents

产品目录

序号 NO.	型号 Part Number	名称及主要特点 Function	工作电压 Voltage Range	封装 Package
-----------	-------------------	---------------------	-----------------------	---------------

## 八、遥控器 / Remote Controller

### (一) 红外遥控/Infrared Remote Controllers

1	AiP4910	内置驱动管和振荡可省电容的55键可编程遥控器编码电路 55 Keys Programmable Infrared Encoder IC with Built-in RC Oscillator and MOSFET without Capacitor	1.8~5.5V	SOP16
2	AiP4911	内置驱动管和振荡可省电容的66键可编程遥控器编码电路 66 Keys Programmable Infrared Encoder IC with Built-in RC Oscillator and MOSFET without Capacitor	1.8~5.5V	SOP16
3	AiP4912	内置驱动管和振荡可省电容的78键可编程遥控器编码电路 78 Keys Programmable Infrared Encoder IC with Built-in RC Oscillator and MOSFET without Capacitor	1.8~5.5V	SOP8 SOP16
4	AiP6920 AiP6921 AiP6922	内置驱动管20/32/64键遥控器电路 20/32/64 Keys Infrared Emitter ICs with Built-in MOSFET	1.8~3.6V	DIE SOP20 SOP24
5	AiP5014	内置驱动管和振荡可省电容的10键5104编码电路 10 Keys 5104 Encoder IC with Built-in RC Oscillator and MOSFET without Capacitor	1.8~5.5V	SOP16
6	AiP4930 <sup>*</sup>	内置驱动管和振荡可省电容的66键遥控器编码电路 66 Keys Infrared Encoder IC with Built-in RC Oscillator and MOSFET without Capacitor	1.8~5.5V	DIE SOP16

### (二) 学习型遥控/Self-Learning Remote Controller

7	AiP4920 <sup>*</sup>	内置驱动管和振荡可省电容的66键学习型遥控器编码电路 66 Keys Self-Learning Infrared Encoder IC with Built-in RC Oscillator and MOSFET without Capacitor	1.8~5.5V	SOP16
---	----------------------	--	----------	-------

### (三) 无线遥控/Wireless Remote Controllers

8	AiP1527	带20位内码的无线遥控发射编码电路 Encoder IC with 20 Addresses for Wireless Remote Control Applications	3.0~13.0V	SOP8
9	AiP1527L	带20位内码的无线遥控发射编码电路 Encoder IC with 20 Addresses for Wireless Remote Control Applications	2.0~11.0V	SOP8
10	AiP1527E	带20位内码的长按键可关断无线遥控发射编码电路 Encoder IC with 20 Addresses for Wireless Remote Control Applications	2.0~11.0V	SOP8
11	AiP2240	带20位内码的无线遥控发射编码电路 Encoder IC with 20 Addresses for Wireless Remote Control Applications	3.0~13.0V	SOP8
12	AiP2240L	带20位内码的无线遥控发射编码电路 Encoder IC with 20 Addresses for Wireless Remote Control Applications	2.0~11.0V	SOP8
13	AiP2240E	带20位内码的长按键可关断无线遥控发射编码电路 Encoder IC with 20 Addresses for Wireless Remote Control Applications	2.0~11.0V	SOP8
14	AiP300	KEELOQ <sup>®</sup> 跳码编码器 K <sub>o</sub> L <sub>o</sub> <sup>®</sup> Code Hopping Encoder	2.0~6.3V	DIP8 SOP8
15	AiP301	KEELOQ <sup>®</sup> 跳码编码器 K <sub>o</sub> L <sub>o</sub> <sup>®</sup> Code Hopping Encoder	3.5~13.0V	DIP8 SOP8
16	AiP501	6通道长按键可关断的无线遥控编码电路 Encoder IC with 6 Keys for Wireless Remote Control Applications	2.0~11.0V	SOP8
17	AiP527	带20位内码的无线遥控发射编码电路 Encoder IC with 20 Addresses for Wireless Remote Control Applications	3.0~13.0V	SOP8
18	AiP1517 <sup>*</sup>	带24位内码的无线遥控发射编码电路 Encoder IC with 24 Addresses for Wireless Remote Control Applications	3.0~13.0V	SOP8
19	AiP126	300-440MHz低功耗OOK/ASK接收电路 300-440MHz Lower Power OOK/ASK Receive IC	2.2~3.6V	SOP8
20	AiP126E	300-440MHz低功耗OOK/ASK接收电路 300-440MHz Lower Power OOK/ASK Receive IC	4.0~5.5V	SOP8
21	AiP4941/42/43	300-440MHz抗干扰低功耗OOK/ASK接收电路 300-440MHz Anti-interference Lower Power OOK/ASK Receive ICs	4.0~5.5V	SOP8
22	AiP4945/46	250-450MHz OOK/ASK发射电路 250-450MHz OOK/ASK Transmitter ICs	2.2~5.5V	SOT23-6

显示驱动  
Display Driver

MCU  
Microcontroller Unit

逻辑  
Logic

信号链  
Signal Chain

电源  
Power

电机驱动  
Motor Driver

音频  
Audio

遥控器  
Remote Controller

通信  
Communication

配套  
Supporting

# i-CORE contents

产品目录

序号 NO.	型号 Part Number	名称及主要特点 Function	工作电压 Voltage Range	封装 Package
23	AiP3356	硅基微波双极性晶体管 Silicon Microwave Bipolar Transistor	3.0~20.0V	SOT23
24	AiP4952A/B/C/D	2.4G单片高速无线收发电路 2.4G High-Speed Wireless Transmitter ICs	1.9~3.6V	SOP8 SOP16 DFN16
25	AiP4947*	300-450MHz OOK/ASK发射电路 300-450MHz OOK/ASK Transmitter IC	1.8~3.6V	SOT23-6
26	AiP4960	300-440MHz低功耗OOK/ASK接收电路 300-440MHz Lower Power OOK/ASK Receive IC	4.0~5.5V	SOP8
27	AiP4961*	300-440MHz低功耗OOK/ASK接收电路 300-440MHz Lower Power OOK/ASK Receive IC	2.6~5.5V	SOP8

# i-CORE contents

产品目录

序号 NO.	型号 Part Number	名称及主要特点 Function	工作电压 Voltage Range	封装 Package
-----------	-------------------	---------------------	-----------------------	---------------

## 九、通信 / Communication

### (一) 电话机电路 / Phone Chip

1	CSC9102	带重拨的音频/脉冲拨号电路 Pulse/Tone Dialer with Last Number Redial (LNR) Function	2.0~5.5V	DIE DIP18
2	AiP9200A/B	双音多频发生器 DTMF Generators	2.5~5.5V	DIP8 DIP14 SOP8 SOP14
3	AiP9032C/D	FSK来电识别器 Calling Line Identification Receiver	3.5~5.5V	DIP8 DIP16 SOP8 SOP16
4	CSC9270	DTMF来电显示解码电路 DTMF Decoder Circuit with Frequency-Band-Divide Filter and Digital Decode Functions	3.0~5.5V	DIE SOP18 DIP18
5	AiP9172	DTMF来电显示解码电路 DTMF Decoder Circuit with Frequency-Band-Divide Filter and Digital Decode Functions	2.5~5.5V	DIE SOP18 DIP18
6	AiP8950	数字电话机专用电路 Digital Phone Asic	3.3V or 5.0V	PLCC44

### (二) 总线接口电路 / Bus Interface Circuit

7	CS1346	低功耗DCE/DTE, V.35收发器 Low Power Single Chip DCE/DTE V.35 Transceiver	VCC: 5.0V VEE: -5.0V	SSOP24
8	CS1344	软件可选择电缆终端器 Software-Selectable Cable Terminator	VCC: 5.0V VEE: -5.0V	SSOP24
9	CS1543	软件可选择多协议收发器 Software-Selectable Multiprotocol Transceiver	5.0V	SSOP28
10	CS1544	软件可选择多协议收发器 Software-Selectable Multiprotocol Transceiver	VCC: 5.0V VDD: 8.0V VEE: -7.0V或 -5.5V	SSOP28
11	AiP485A AiP485B	RS-485总线收发器 RS-485 Transceivers	3~5.5V	MSOP8 SOP8 DFN8
12	AiP8485A AiP8485B	极性自适应RS-485总线收发器 Polarity self-adaption RS-485 Transceivers	3~5.5V	MSOP8 SOP8 DFN8
13	AiP3232	3V~5.5V多通道RS-232总线收发器 3V~5.5V Multichannel RS-232 Transceiver	3~5.5V	SOP16 TSSOP16 SSOP16
14	AiP3122	低功耗多通道RS-232总线收发器 Low-Consume Multichannel RS-232 Transceiver	VCC: 3~5.5V VL: 1.65~5.5V	QFN24

显示驱动  
Display Driver

MCU  
Microcontroller Unit

逻辑  
Logic

信号链  
Signal Chain

电源  
Power

电机驱动  
Motor Driver

音频  
Audio

遥控器  
Remote Controller

通信  
Communication

配套  
Supporting

序号 NO.	型号 Part Number	名称及主要特点 Function	工作电压 Voltage Range	封装 Package
-----------	-------------------	---------------------	-----------------------	---------------

## 十、配套/Supporting

(一) 计量类电路/Metering ICs					
1	AiP8209	单相多功能防窃电专用计量芯片 Single-Phase Multifunctional Anti-Theft Power Metering IC	4.5~5.5V	SSOP24	
2	CS9105	三相电子电度表电路 Three Phase Bi-directional Power/Energy Metering IC with Instantaneous Pulse Output	4.5~5.5V	DIP40 QFP44	PLCC44
(二) 电容式触摸芯片/ Touch Chips					
3	TK8021	单键触摸芯片 1-key Touch Chip	2.1~5.5V	SOT23-6	
4	TK8022	双键触摸芯片 2-key Touch Chip	2.1~5.5V	SOP8	
5	TK8023	三键触摸芯片 3-key Touch Chip	2.1~5.5V	SOP8 MSOP10	
6	AiP5901	单键触摸芯片 1-key Touch Chip	2.1~5.5V	SOT23-6	
7	AiP5905	五键触摸芯片 5-key Touch Chip	2.7~5.5V	SOP16	
8	AiP5908	八键触摸芯片 8-key Touch Chip	2.7~5.5V	SOP14	
9	AiP5916	十六键触摸芯片 16-key Touch Chip	2.7~5.5V	QFN24 SSOP24	
(三) 存储器/EEPROM					
10	AiP24C02 AiP24C02A	2线串行EEPROM I <sup>2</sup> C Serial EEPROM	1.8~5.5V	DIP8 TSSOP8	SOP8
11	AiP24C04	2线串行EEPROM I <sup>2</sup> C Serial EEPROM	1.8~5.5V	DIP8 TSSOP8	SOP8
12	AiP24C08	2线串行EEPROM I <sup>2</sup> C Serial EEPROM	1.8~5.5V	DIP8 TSSOP8	SOP8
13	AiP24C16	2线串行EEPROM I <sup>2</sup> C Serial EEPROM	1.8~5.5V	DIP8 TSSOP8	SOP8
14	AiP24C32	2线串行EEPROM I <sup>2</sup> C Serial EEPROM	1.8~5.5V	DIP8 TSSOP8	SOP8
15	AiP24C64	2线串行EEPROM I <sup>2</sup> C Serial EEPROM	1.8~5.5V	DIP8 TSSOP8	SOP8
16	AiP24C128	2线串行EEPROM I <sup>2</sup> C Serial EEPROM	1.8~5.5V	DIP8 TSSOP8	SOP8
17	AiP24C256	2线串行EEPROM I <sup>2</sup> C Serial EEPROM	1.8~5.5V	DIP8 TSSOP8	SOP8
18	AiP24C512	2线串行EEPROM I <sup>2</sup> C Serial EEPROM	1.8~5.5V	DIP8 TSSOP8	SOP8
19	AiP24CM01	2线串行EEPROM I <sup>2</sup> C Serial EEPROM	1.8~5.5V	DIP8 TSSOP8	SOP8
(四) 时钟电路/Clock Chip					
20	CS1380 CS1381	串行时钟电路 Serial Timekeeper Chip	2.0~5.5V	DIP8 SOP8	
21	CS4725 AiP8025T	具有温度补偿功能的高精度时钟电路 Real-time Clock Module Adjusted for High Precision	2.5~5.5V	SOP14	

# i-CORE contents

产品目录

序号 NO.	型号 Part Number	名称及主要特点 Function	工作电压 Voltage Range	封装 Package
22	AiP8563	I <sup>2</sup> C实时时钟/日历芯片 I <sup>2</sup> C Real-Time Clock/Calendar Chip	1.8~5.5V	DIP8 SOP8 TSSOP8 MSOP8
23	AiP1302	涓流充电实时时钟芯片 Trickle-Charge Timekeeping Chip	2.0~5.5V	DIP8 TSSOP8 SOP8
24	AiP1307	串行实时时钟电路 Serial I <sup>2</sup> C Real-Time Clock Chip	2.0~5.5V	DIP8 SOP8
25	AiP555	通用计时器 General Purpose Timers	2.0~18V	DIP8 SOP8
26	AiP6445	定时器电路 Time IC	8.0V	SIP8 SOP8
<b>(五) 热释红外/PIR IC</b>				
27	AiP9803	带过零检测功能的热释电红外控制电路 PIR Induction Control IC with ZCD	4.0~5.5V	DIP16 SOP16
28	BISS0001	热释电红外控制电路 PIR Induction Control IC	3.0~5.0V	DIP16 SOP16
<b>(六) 其他/Others</b>				
29	AiP18B20	单总线数字温度传感器 Single Bus Digital Temperature Sensor	3.0~5.5V	TO-92 MSOP8 SOP8
30	AiP2010	霍尔开关传感器 Holzer Switch Sensor	3.0~20V	SIP4L TO-94
31	AiP2224	IC卡接口电路 IC Card Interface	2.7~6.5V	SOP28

注：\*表示研发中

▲表示无现货，可接受提前一月订单

显示驱动  
Display Driver

MCU  
Microcontroller Unit

逻辑  
Logic

信号链  
Signal Chain

电源  
Power

电机驱动  
Motor Driver

音响  
Audio

遥控器  
Remote Controller

通信  
Communication

配套  
Supporting





### 显示驱动

- CS1621
- AiP16C21
- AiP16C22
- AiP16C23
- AiP31256
- AiP31729
- AiP33616
- AiP33620
- AiP33624
- AiP3332
- AiP3331
- AiP3368H
- 遥控**
- AiP4952A/B/C/D
- AiP1527

### MCU

- AiP8P005G
- AiP8M103G
- AiP9P351
- AiP8F1016
- AiP8F2032
- AiP8F3208
- AiP8F3216/E
- AiP8F3264
- 电源监控**
- AiP706系列
- AiP809系列
- AiP7042
- AiP7033
- 漏电保护**
- AiP54123

### 逻辑

- AiP74HC138
- AiP74HC245
- AiP74HC595
- AiP74LVC08
- 电池管理**
- AiP4054
- AiP4056
- 触摸**
- TK8021
- TK8022
- TK8023
- AiP5901
- AiP5905
- AiP5908
- AiP5916

### 存储器

- AiP24C02/A
- AiP24C04
- AiP24C08
- AiP24C16
- AiP24C32
- AiP24C64
- AiP24C128
- AiP24C256
- AiP24C512
- AiP24CM01
- 通用运算放大器**
- AiP321
- AiP358
- AiP324
- AiP1330

### 电机驱动

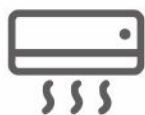
- AiP6120
- AiP6121
- AiP6150H
- AiP6189
- AiP6190
- 电平转换**
- AiP2206
- AiPTS系列
- AiPTB系列
- 电源**
- 75系列
- 78系列
- 79系列
- AiP431
- AiP1117

### 达林顿

- AiP2000
- AiP2001
- AiP2002
- AiP2003
- AiP2003L
- AiP2603
- AiP2803
- AiP2803L
- AiP2803LS
- 实时时钟**
- AiP1380
- AiP1381
- AiP8025T
- AiP8563
- AiP1302
- AiP1307



冰箱



空调



洗衣机



扫地机器人



智能电饭煲



指纹锁

# i-CORE

## 网通产品 应用示例



产品应用  
Product Application

### 逻辑HC/HCT系列

- AiP74HC04
- AiP74HC14
- AiP74HC125
- AiP74HCT00
- AiP74HCT04

### 逻辑AUP系列

- AiP74AUP1G04
- AiP74AUP1G07
- AiP74AUP1G12

### 逻辑LVC系列

- AiP74LVC1G08
- AiP74LVC04
- AiP74LVC07
- AiP74LVC157

### 电平转换

- AiPTS系列
- AiPTB系列
- AiPGTL系列

### 逻辑LVT系列

- AiP74LVT245
  - AiP74LVTH125
- ### 模拟开关系列
- AiP74LVC1G3157
  - AiP74CBTLV3257

### 逻辑AVC系列

- AiP74AVC2T45
  - AiP74AVC4T245
- ### 电源监控
- AiP706系列
  - AiP809系列



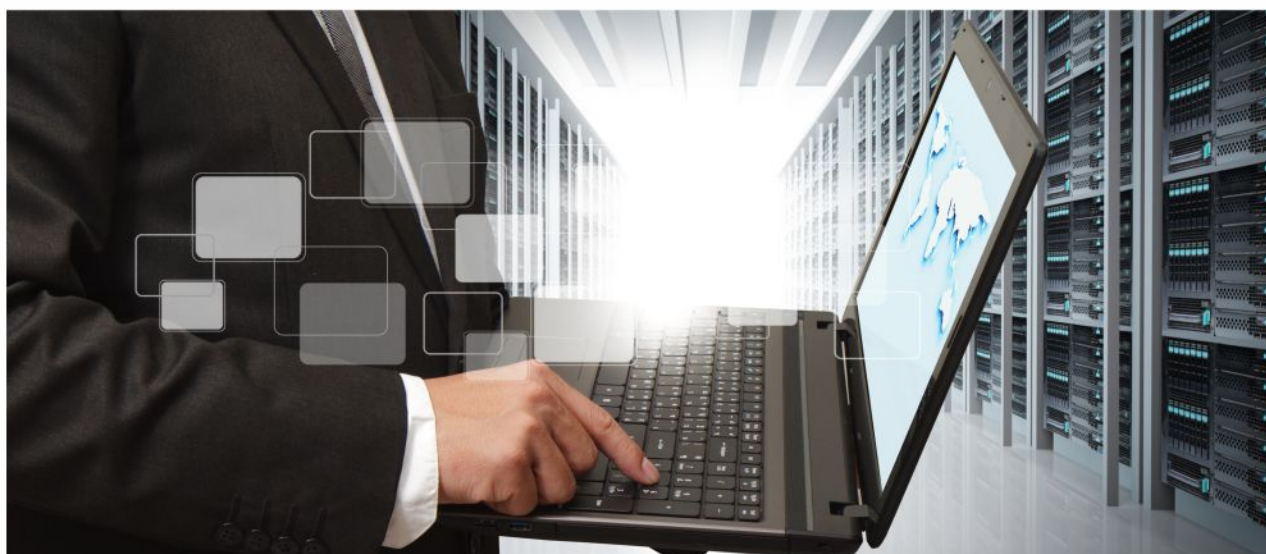
路由器



交换机



5G基站



### 逻辑HC系列

- AiP74HC32
- AiP74HC4052

### 逻辑AHC系列

- AiP74AHC1G04
- AiP74AHC1G08
- AiP74AHC1G09

### 电平转换

- AiPTS系列
- AiPTB系列
- AiPGTL系列

### 通用运算放大器

- AiP358系列

### 逻辑AVC系列

- AiP74AVC4T245
- AiP74AVCH4T245
- AiP74AVC4T774
- AiP74AVC8T245

### 逻辑AUP系列

- AiP74AUP1G07
- AiP74AUP1T34

### 比较器

- AiP2901
- AiP2903

### 电流检测运算放大器

- AiP8199

### 逻辑LVC系列

- AiP74LVC1G00
- AiP74LVC1G04
- AiP74LVC1G06
- AiP74LVC1G07
- AiP74LVC1G08
- AiP74LVC1G14
- AiP74LVC1G17
- AiP74LVC1G32
- AiP74LVC1G86
- AiP74LVC1G125
- AiP74LVC1G126
- AiP74LVC2G07
- AiP74LVC2G17
- AiP74LVC2G74
- AiP74LVC1G3157
- AiP74LVC07
- AiP74LVC08
- AiP74LVC14
- AiP74LVC32
- AiP74LVC74
- AiP74LVC125
- AiP74LVC244
- AiP74LVC8T245



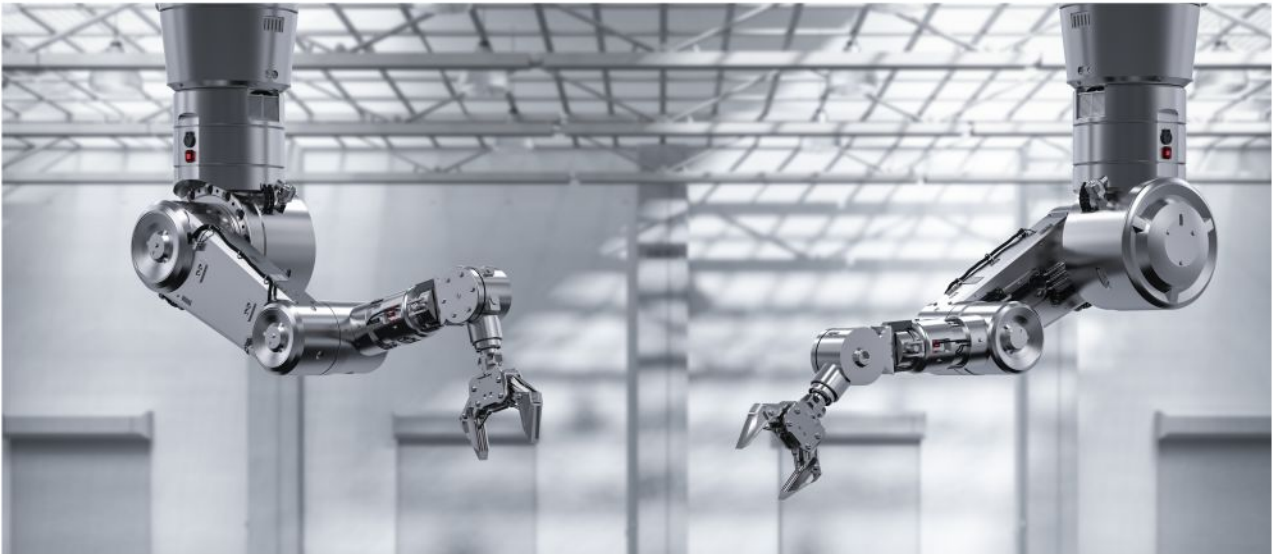
PC



服务器

# i-CORE

## 工业控制 应用示例



产品应用  
Product Application

### MCU

- AiP8F7232
- AiP8F7232S
- AiP8F7201
- AiP8F7201S

### 通用运算放大器

- AiP2904
- AiP2902

### 比较器

- AiP2901
- AiP2903

### 显示驱动

- CS1621
- AiP1629
- AiP1612
- AiP33616
- AiP33620
- AiP33624
- AiP3331
- AiP3332

### 逻辑HC/HCT系列

- AiP74HC00
- AiP74HC08
- AiP74HC10
- AiP74HC14
- AiP74HCT14
- AiP74HC165
- AiP74HC245
- AiP74HC574
- AiP74HC595

### 逻辑LVC系列

- AiP74LVC1G04
- AiP74LVC1G08
- AiP74LVC1G14
- AiP74LVC1G3157
- AiP74LVC2G04
- AiP74LVC07
- AiP74LVC14
- AiP74LVC244
- AiP74LVC16245
- AiP74LVC2T45

### 电源

- 75系列
- 78系列
- 79系列
- AiP1117

### 总线接口

- AiP485A
- AiP485B
- AiP3232

### CAN总线

- AiP1042\*
- AiP1022\*



工业机器人



PLC逻辑控制



自动化装备



工业缝纫机



### 显示驱动

- CS1621
- AiP33616
- AiP33620
- AiP33624
- AiP3331
- AiP3332

### PWM控制器

- AiP384X系列
- AiP494

### 逻辑HC/HCT系列

- AiP74HC08
- AiP74HCT08
- AiP74HC14
- AiP74HC132
- AiP74HCT240
- AiP74HC244
- AiP74HCT244
- AiP74HC540
- AiP74HC541

### 逻辑LV/LVC系列

- AiP74LV08
- AiP74LVC14
- AiP74LVC245
- AiP74LV4051
- AiP74LVC4245
- AiP74LVC2T45

### 比较器

- AiP2901
- AiP2903

### 模拟开关

- AiP74CBTLV3253
- AiP74CBTLV3257

### 通用运算放大器

- AiP321
- AiP358
- AiP2904
- AiP324
- AiP2902

### 电平转换

- AiPTS系列
- AiPTB系列

### 总线接口

- AiP485A
- AiP485B
- AiP3232

### CAN总线

- AiP1042\*
- AiP1022\*

### 电源

- 75系列
- 78系列
- 79系列
- AiP1117
- AiP431

### 电源监控

- AiP706系列
- AiP809系列



光伏发电



风力发电



逆变器



户外储能



换电站

# i-CORE

## 汽车电子 应用示例



已通过AEC-Q100认证

### 逻辑

- AiP74LVC1T45-Q1  
功能：双电源带三态控制的总线收发器  
工作电压：VDDA:1.2~5.5V  
VDDB:1.2~5.5V  
封装：SOT363

### 逻辑

- AiP74LVC8T245-Q1  
功能：双电源带三态控制的8路总线收发器  
工作电压：VDDA:1.2~5.5V  
VDDB:1.2~5.5V  
封装：TSSOP24

### 逻辑

- AiP74LVC2T45-Q1  
功能：双电源带三态控制的2路总线收发器  
工作电压：VDDA:1.2~5.5V  
VDDB:1.2~5.5V  
封装：VSSOP8

### 逻辑

- AiP74LVC1G08-Q1  
功能：单路2输入与门  
工作电压：1.65~5.5V  
封装：SOT353

### 车规认证中

#### 电平转换

- AiPTS0104-Q1
- AiPTS0108-Q1

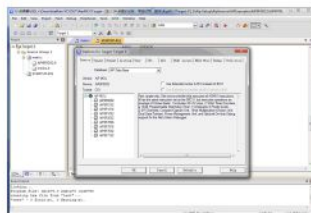
#### 通用运算放大器

- AiP2902-Q1
- AiP2904-Q1

仿真器



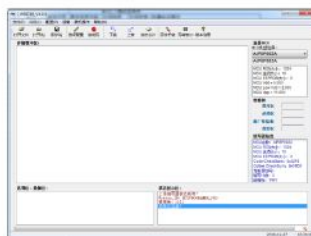
仿真器上位机界面



V1.0插卡烧录器iWriter



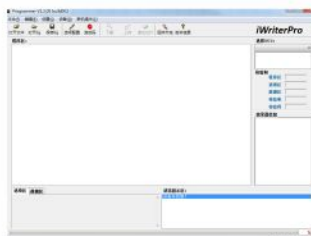
插卡烧录器上位机界面



V2.0 免插卡烧录器 iWriterPro



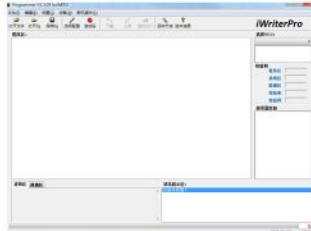
免插卡烧录器上位机界面



一拖四烧录器 i-WriterGANG-4



一拖四烧录器上位机界面



软件界面



触摸按键调试软件  
iView-TK

**总部：**江苏省无锡市滨湖区建筑西路777号无锡国家集成电路设计中心B4栋  
电话：0510-85572706

**华南分公司：**广东省深圳市宝安区西乡银田路智谷科技园C栋501-508  
电话：0755-88370507

**佛山分公司：**广东省佛山市顺德区伦教街道霞石村成业路10号8楼  
电话：0757-22271359

**顺德应用研发中心：**广东省佛山市顺德区大良镇凤山中路3号弘越大厦6层

**合肥研发中心：**安徽省合肥市蜀山区宿松路3963号305

**官方网站：** [www.i-core.cn](http://www.i-core.cn)

**业务合作：** 0510-85572706

**市场&媒体：** [marketing@i-core.cn](mailto:marketing@i-core.cn)

**简历投递：** [xuxl@i-core.cn](mailto:xuxl@i-core.cn)



中微爱芯微信公众号



中微爱芯官方抖音

声明：本手册仅供选型参考，本公司不作任何明示或暗示的保证，包括但不限于适用性、特殊应用或不侵犯第三方权利等。除非另有说明，否则本手册中产品不适用于任何军事用途、生命救援、生命维持或安全等关键设备，也不适用于因产品故障或失效可能导致人身伤害、死亡或严重财产或环境损害的应用。本公司保留随时对本手册产品信息进行更新的权利，本手册中的信息如有变化，恕不另行通知，若要了解详细产品信息，建议采购前咨询我司销售人员。本公司保留最终解释权。