



# Product Selection Guide 2019

[www.sg-micro.de](http://www.sg-micro.de)

**SG Micro Corp**

No. 87 North Xisanhuan Road, IFEC, Suite C-1301,  
Haidian District, Beijing, 100089  
China  
Tel: 86-10-88825716/17  
Fax: 86-10-88825736

SG Micro Corp

The background features a close-up of a person's hand resting on a laptop keyboard. A semi-transparent blue hexagonal shape is overlaid on the center. Six white circular icons are connected to the vertices of this hexagon by thin white lines. The icons represent: a document (top-left), a globe (top-right), a dollar sign (\$) (middle-right), a padlock (bottom-right), a magnifying glass (bottom-left), and a folder (middle-left).

## SGMICRO OVERVIEW

SG Micro Corp (SGMICRO) specializes in high performance, high quality analog IC design, marketing and sales, and offers innovative solutions for a broad range of applications in wireless communication, consumer, medical, automotive and industrial markets.

SGMICRO's close partnership with customers and technology expertise in analog IC are the driving forces for continuous improvements and innovations. Benefited from years of heavy investments in R&D and advanced technologies, SGMICRO has introduced more than 1500 analog IC products with excellent reliability and consistency, including precision signal conditioning products such as amplifiers, buffers, comparators, switches and interface products, as well as the energy efficient power management ICs.

Our innovative analog IC solutions with an extensive portfolio allow our customers to target such diverse and fast growing markets as smart devices, mobile electronics and green energy technologies, and have resulted in improved performance such as longer battery life, less peripheral components, smaller PCB space and lower cost.

Quality and reliability are on top of the priority list at SGMICRO at all times. SGMICRO strives to become one of the world's leading analog IC solution providers by offering our customers with best-quality products and services. It is therefore the policy of SGMICRO to continually improve our technologies and systems in an ongoing effort to meet and exceed our customers' expectations. Through the strictest QA system, SGMICRO assures each chip it produced of excellent quality and reliability.

We pursue the leading position in analog IC industry with advanced design, superior performance and excellent quality. We are committed to improve our lives and environment in every possible way through advancements in technology and technical innovations. SGMICRO strives to help our customers develop differentiated products and leading in their chosen markets.

# CONTENTS

## Operational Amplifier

Nano Power OPA.....	1
Micro Power OPA.....	1~2
High Speed OPA.....	3
High Precision OPA.....	3~5
Low Noise OPA.....	6~7
Special Function Operational Amplifiers.....	8
High Output Operational Amplifiers.....	8
Tiny Package Operational Amplifiers.....	9

## Comparator

Nano Power Comparators.....	10
High Speed Comparators.....	10
High Voltage Comparators.....	11

## Data Converter

Digital-to-Analog Converters.....	12
Oversampling Analog-to-Digital Converters.....	12

## Audio/Video Driver

High Performance Video Buffers.....	13
High Performance Audio Line Drivers.....	14

## Analog Switch

Analog Switches.....	15~16
Switch Complexes.....	17

## Logic IC

Level Translators.....	18
------------------------	----

## Power Management IC

Supervisory Circuits.....	19
Over-Voltage Protection ICs.....	19
Li-Ion Battery Chargers and Protection ICs.....	20
DC/DC Converters.....	20
Charge Pump DC/DC Converters.....	21
High Reliability LDOs.....	21
Isolated Power.....	21
Load Switches.....	22

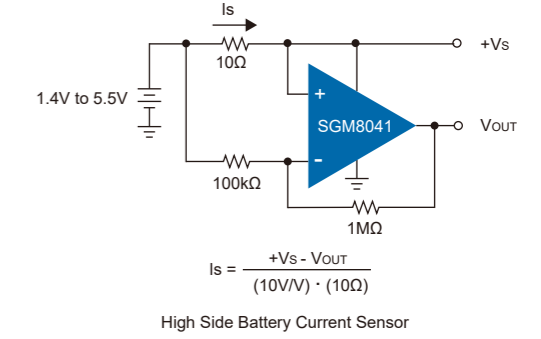
## Motor/MOSFET Driver

Motor Drivers.....	23
MOSFET Drivers.....	23



# Nano Power Operational Amplifiers

The Nano Power Operational Amplifier family is designed to support rail-to-rail input and output operation and has as low as 350nA quiescent current. These specifications make these operational amplifiers extremely appropriate for low frequency low power applications, such as battery current monitoring and sensor conditioning.



Amplifiers per Package	Part Number	I <sub>Q</sub> /Amp Typ (μA)	Shut-down	V <sub>CC</sub> (V)	GBP Typ (kHz)	Slew Rate Typ (V/ms)	E <sub>NOISE</sub> 0.1Hz ~ 10Hz (μV <sub>PP</sub> )	E <sub>NOISE</sub> Typ @1kHz (nV/√Hz)	V <sub>OS</sub> Max @25°C (mV)	TC of V <sub>OS</sub> Typ (μV/°C)	I <sub>B</sub> Typ (pA)	A <sub>VO</sub> Typ (dB)	CMRR Typ (dB)	Rail-to-Rail Input	Rail-to-Rail Output	Package	Features
2	SGM8142	0.35	No	1.4 ~ 5.5	5	1.6	4	130	2.5	2	1	93	83	Yes	Yes	SOIC-8,MSOP-8	Ultra Low Quiescent Current, Rail-to-Rail Input and Output
1	SGM8141	0.38	No	1.4 ~ 5.5	5	1.5	4.9	125	2.5	2	1	90	80	Yes	Yes	SOT-23-5,SOIC-8,MSOP-8	Ultra Low Quiescent Current, Rail-to-Rail Input and Output
1	SGM8040-1	0.55	No	1.4 ~ 5.5	11	4	5	180	0.23	1	10	120	92	Yes	Yes	SOT-23-5,SC70-5,SOIC-8	Very Low Quiescent Current, Rail-to-Rail Input and Output
2	SGM8040-2	0.55	No	1.4 ~ 5.5	11	4	5	180	0.23	1	10	120	92	Yes	Yes	TDFN-2x2-8L,SOIC-8	Very Low Quiescent Current, Rail-to-Rail Input and Output
2	SGM8042	0.67	No	1.4 ~ 5.5	14.5	4.2	3.2	180	2.5	2.5	1	93	84	Yes	Yes	SOIC-8,MSOP-8	Very Low Quiescent Current, Rail-to-Rail Input and Output
4	SGM8044	0.67	No	1.4 ~ 5.5	15	3.4	3.2	190	2.5	2.5	1	93	83	Yes	Yes	SOIC-14,TSSOP-14,TQFN-3x3-16L	Very Low Quiescent Current, Rail-to-Rail Input and Output
2	SGM8046	0.67	No	1.4 ~ 5.5	100	14.5	3	190	2.5	2.5	1	92	82	Yes	Yes	SOIC-8,MSOP-8	Stable for Gain of 10, 100kHz, Very Low I <sub>Q</sub> , RRIO
4	SGM8048	0.69	No	1.4 ~ 5.5	100	14.5	3.5	205	2.5	2.5	1	92	83	Yes	Yes	SOIC-14,TSSOP-14	Stable for Gain of 10, 100kHz, Very Low I <sub>Q</sub> , RRIO
1	SGM8041	0.71	No	1.4 ~ 5.5	14.5	3.3	3.4	135	2.5	2.5	1	93	84	Yes	Yes	SOT-23-5,SOIC-8,MSOP-8	Very Low Quiescent Current, Rail-to-Rail Input and Output
1	SGM8045	0.71	No	1.4 ~ 5.5	100	16	3.2	160	2.5	2.5	1	93	84	Yes	Yes	SOT-23-5,SOIC-8,MSOP-8	Stable for Gain of 10, 100kHz, Very Low I <sub>Q</sub> , RRIO
2	SGM8039-2	1.5	No	1.4 ~ 5.5	12	4	5	190	0.08 <sup>†</sup>		5	120	96	Yes	Yes	MSOP-10	Very Low Quiescent Current, Integrated Special Switch, RRIO

Notes: † Typical Values @ 25°C

# Micro Power Operational Amplifiers

The Micro Power Operational Amplifier family is designed to support rail-to-rail input and output operation and has as low as 2.5μA quiescent current. These specifications make these operational amplifiers extremely appropriate for low frequency low power applications, such as battery current monitoring and sensor conditioning.

Amplifiers per Package	Part Number	I <sub>Q</sub> /Amp Typ (μA)	Shut-down	V <sub>CC</sub> (V)	GBP Typ (MHz)	Slew Rate Typ (V/ms)	E <sub>NOISE</sub> 0.1Hz ~ 10Hz (μV <sub>PP</sub> )	E <sub>NOISE</sub> Typ @1kHz (nV/√Hz)	V <sub>OS</sub> Max @25°C (mV)	TC of V <sub>OS</sub> Typ (μV/°C)	I <sub>B</sub> Typ (pA)	A <sub>VO</sub> Typ (dB)	CMRR Typ (dB)	Rail-to-Rail Input	Rail-to-Rail Output	Package	Features
1	SGM8049-1	2.5	No	1.8 ~ 5.5	0.12	80	3.5	75	0.85	0.6	1	118	100	Yes	Yes	SOT-23-5,SC70-5,TDFN-2x2-6L	Pico Amp Input Current, Micro Power, Rail-to-Rail Input and Output
2	SGM8049-2	2.5	No	1.8 ~ 5.5	0.12	80	3.5	75	0.85	0.6	1	118	100	Yes	Yes	SOT-23-8,SOIC-8	Pico Amp Input Current, Micro Power, Rail-to-Rail Input and Output
4	SGM8049-4	2.5	No	1.8 ~ 5.5	0.12	80	3.5	75	0.85	0.6	1	118	100	Yes	Yes	TSSOP-14	Pico Amp Input Current, Micro Power, Rail-to-Rail Input and Output
1	SGM8240-1	2.8	No	2.7 ~ 24	0.1	50	3	100	1	3	5	120	110	Yes	Yes	SC70-5,SOT-23-5	High Voltage, Micro Power, Precision
2	SGM8240-2	2.8	No	2.7 ~ 24	0.1	50	3	100	1	3	5	120	110	Yes	Yes	TDFN-2x3-8L,SOIC-8,MSOP-8	High Voltage, Micro Power, Precision
4	SGM8240-4	2.8	No	2.7 ~ 24	0.1	50	3	100	1	3	5	120	110	Yes	Yes	SOIC-14	High Voltage, Micro Power, Precision
1	SGM8521	5.5	No	2.1 ~ 5.5	0.15	50		85	3.5	2	3	110	87	Yes	Yes	SOT-23-5,SOIC-8	Low Bias Current, Micro Power, Rail-to-Rail Input and Output
2	SGM8522	5.5	No	2.1 ~ 5.5	0.15	50		85	3.5	2	3	110	87	Yes	Yes	SOIC-8,MSOP-8	Low Bias Current, Micro Power, Rail-to-Rail Input and Output
4	SGM8524	5.5	No	2.1 ~ 5.5	0.15	50		85	3.5	2	3	110	87	Yes	Yes	SOIC-14,TSSOP-14	Low Bias Current, Micro Power, Rail-to-Rail Input and Output
1	SGM8954-1	9	No	1.8 ~ 5.5	0.11	40	1	65	0.035	0.055	60	125	108	Yes	Yes	SOT-23-5,SOIC-8,UTDFN-1.6x1.6-6L	Micro Power, CMOS, Zero-Drift, Rail-to-Rail Input and Output
2	SGM8954-2	9	No	1.8 ~ 5.5	0.11	40	1	65	0.035	0.055	60	125	108	Yes	Yes	SOIC-8,MSOP-8,TDFN-2x2-8L	Micro Power, CMOS, Zero-Drift, Rail-to-Rail Input and Output
1	SGM8953-1	17	No	1.8 ~ 5.5	0.2	50	1	50	0.05	0.06	80	118	106	Yes	Yes	SOT-23-5,SOIC-8,UTDFN-1.6x1.6-6L	Micro Power, CMOS, Zero-Drift, Rail-to-Rail Input and Output
2	SGM8953-2	17	No	1.8 ~ 5.5	0.2	50	1	50	0.05	0.06	80	118	106	Yes	Yes	SOIC-8,MSOP-8,TDFN-2x2-8L	Micro Power, CMOS, Zero-Drift, Rail-to-Rail Input and Output

# Micro Power Operational Amplifiers

Amplifiers per Package	Part Number	I <sub>Q</sub> /Amp Typ (μA)	Shut-down	V <sub>CC</sub> (V)	GBP Typ (MHz)	Slew Rate Typ (V/ms)	E <sub>NOISE</sub> 0.1Hz ~ 10Hz (μV <sub>PP</sub> )	E <sub>NOISE</sub> Typ @1kHz (nV/√Hz)	V <sub>OS</sub> Max @25°C (mV)	TC of V <sub>OS</sub> Typ (μV/°C)	I <sub>B</sub> Typ (pA)	A <sub>VO</sub> Typ (dB)	CMRR Typ (dB)	Rail-to-Rail Input	Rail-to-Rail Output	Package	Features
1	SGM8531	18	No	2.1 ~ 5.5	0.5	200		33	3.5	1.7	0.5	104	75	Yes	Yes	SOT-23-5,SOIC-8	Low Bias Current, Micro Power, Rail-to-Rail Input and Output
2	SGM8532	18	No	2.1 ~ 5.5	0.5	200		33	3.5	1.7	0.5	104	75	Yes	Yes	SOIC-8,MSOP-8	Low Bias Current, Micro Power, Rail-to-Rail Input and Output
4	SGM8534	18	No	2.1 ~ 5.5	0.5	200		33	3.5	1.7	0.5	104	75	Yes	Yes	SOIC-14,TSSOP-14	Low Bias Current, Micro Power, Rail-to-Rail Input and Output
1	SGM8541	46	No	2.1 ~ 5.5	1.1	520		27	3.5	2.7	0.5	105	80	Yes	Yes	SOT-23-5,SOIC-8,SC70-5	Pico Amp Input Current, Micro Power, Rail-to-Rail Input and Output
2	SGM8542	46	No	2.1 ~ 5.5	1.1	520		27	3.5	2.7	0.5	105	80	Yes	Yes	SOIC-8,MSOP-8,TSSOP-8	Pico Amp Input Current, Micro Power, Rail-to-Rail Input and Output
4	SGM8544	46	No	2.1 ~ 5.5	1.1	520		27	3.5	2.7	0.5	105	80	Yes	Yes	SOIC-14,TSSOP-14	Pico Amp Input Current, Micro Power, Rail-to-Rail Input and Output
1	SGM8543	48	Yes	2.1 ~ 5.5	1.1	520		27	3.5	2.7	0.5	105	76	Yes	Yes	SOT-23-6,SOIC-8	Pico Amp Input Current, Micro Power, Rail-to-Rail Input and Output
1	SGM8545	48	No	2.1 ~ 5.5	1.1	520		27	3.5	2.7	0.5	105	76	Yes	Yes	SOT-23-5	Pico Amp Input Current, Micro Power, Rail-to-Rail Input and Output
1	SGM8210-1	50	No	3.3 ~ 24	1	300	3	25	1	1	5	120	115	Yes	Yes	SOT-23-5,SC70-5	High Voltage, Micro Power, Precision
2	SGM8210-2	50	No	3.3 ~ 24	1	300	3	25	1	1	5	120	115	Yes	Yes	SOIC-8,MSOP-8,TDFN-2x3-8L	High Voltage, Micro Power, Precision
4	SGM8210-4	50	No	3.3 ~ 24	1	300	3	25	1	1	5	120	115	Yes	Yes	SOIC-14	High Voltage, Micro Power, Precision
1	SGM8535	80	No	1.8 ~ 5.5	1.5	800		30	3.4	1.5	3	103	85	No	Yes	SOT-23-5,SC70-5,SOIC-8,MSOP-8	1.5MHz/1.8V, Unity Gain Stable, Rail-to-Rail Output
2	SGM8536	80	No	1.8 ~ 5.5	1.5	800		30	3.4	1.5	3	103	85	No	Yes	SOIC-8,MSOP-8	1.5MHz/1.8V, Unity Gain Stable, Rail-to-Rail Output
1	SGM8537	80	Yes	1.8 ~ 5.5	1.5	800		30	3.4	1.5	3	103	85	No	Yes	SOT-23-6,SOIC-8,MSOP-8	1.5MHz/1.8V, Unity Gain Stable, Rail-to-Rail Output
4	SGM8538	80	No	1.8 ~ 5.5	1.5	800		30	3.4	1.5	3	103	85	No	Yes	SOIC-14,TSSOP-14	1.5MHz/1.8V, Unity Gain Stable, Rail-to-Rail Output
1	SGM8271	150	No	4.5 ~ 36	1.4	7000		43	3	3	20	100	95	No	Yes	SOT-23-5,SOIC-8,MSOP-8	1.4MHz/7V/μs, Low Power, Rail-to-Rail Output
2	SGM8272	150	No	4.5 ~ 36	1.4	7000		43	3	3	20	100	95	No	Yes	SOIC-8,MSOP-8	1.4MHz/7V/μs, Low Power, Rail-to-Rail Output
4	SGM8274	150	No	4.5 ~ 36	1.4	7000		43	3	3	20	100	95	No	Yes	SOIC-14,TSSOP-14	1.4MHz/7V/μs, Low Power, Rail-to-Rail Output
2	LM2904	215	No	3 ~ 32	1.4	500	9	39	3.5 <sup>†</sup>		30	122	133	No	Yes	SOIC-8,MSOP-8,TSSOP-8	High Voltage, Precision
2	SGM8270-2	500	No	3.3 ~ 36	2.5	8000	3	15	2.8	0.8	10	120	85	Yes	Yes	SOIC-8,MSOP-8	High Voltage, Precision, Rail-to-Rail Input and Output
4	SGM8270-4	500	No	3.3 ~ 36	2.2	8000	3.5	15	0.3 <sup>†</sup>	0.8	10	120	85	Yes	Yes	SOIC-14,TSSOP-14	High Voltage, Precision, Rail-to-Rail Input and Output
1	SGM8273-1	600	No	3.3 ~ 36	4	6000	1.5	9	1	2	10	90	86	Yes	Yes	SOT-23-5,SOIC-8,MSOP-8	High Voltage, Precision, Rail-to-Rail Input and Output
2	SGM8273-2	600	No	3.3 ~ 36	4	6000	1.5	9	1	2	10	90	86	Yes	Yes	SOIC-8	High Voltage, Precision, Rail-to-Rail Input and Output
4	SGM8273-4	600	No	3.3 ~ 36	4	6000	1.5	9	1	2	10	90	86	Yes	Yes	SOIC-14	High Voltage, Precision, Rail-to-Rail Input and Output
1	SGM8276-1	1400	No	3.3 ~ 36	10	8000	3	10	1.5	1	50	120	80	Yes	Yes	SOT-23-5	High Voltage, Low Noise, Precision, Rail-to-Rail Input and Output
2	SGM8276-2	1400	No	3.3 ~ 36	10	8000	3	10	1.5	1	50	120	80	Yes	Yes	SOIC-8	High Voltage, Low Noise, Precision, Rail-to-Rail Input and Output
4	SGM8276-4	1400	No	3.3 ~ 36	10	8000	3	10	1.5	1	50	120	80	Yes	Yes	SOIC-14	High Voltage, Low Noise, Precision, Rail-to-Rail Input and Output

Notes: † Typical Values @ 25°C

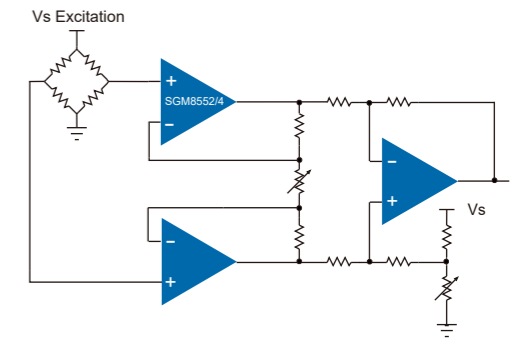
# High Speed Operational Amplifiers

Amplifiers per Package	Part Number	GBP Typ (MHz)	Bandwidth @-3dB (MHz)	Shut-down	V <sub>CC</sub> (V)	Slew Rate		E <sub>NOISE</sub> Typ @1MHz (nV/√Hz)	V <sub>OS</sub> Max @25°C (mV)	TC of V <sub>OS</sub>		I <sub>B</sub> Typ (pA)	I <sub>Q</sub> /Amp Typ (mA)	A <sub>VO</sub> Typ (dB)	CMRR Typ (dB)	Rail-to-Rail Input	Rail-to-Rail Output	Package	Features
						Typ (V/μs)	Typ (V/μs)			Typ (μV/°C)	I <sub>B</sub> Typ (pA)								
1	SGM8968-1	11		No	2.1 ~ 5.5	25	18	0.05 <sup>†</sup>		5	1.6	105	100	Yes	Yes	SOT-23-5,SOIC-8	11MHz High Precision Rail-to-Rail Input and Output Amp		
2	SGM8968-2	11		No	2.1 ~ 5.5	25	18	0.05 <sup>†</sup>		5	1.6	105	100	Yes	Yes	SOIC-8	11MHz High Precision Rail-to-Rail Input and Output Amp		
1	SGM8967-1	27		No	2.1 ~ 5.5	30	18	0.05 <sup>†</sup>		5	2.6	105	100	Yes	Yes	SOT-23-5,SOIC-8	27MHz High Precision Rail-to-Rail Input and Output Amp		
2	SGM8967-2	27		No	2.1 ~ 5.5	30	18	0.05 <sup>†</sup>		5	2.6	105	100	Yes	Yes	MSOP-8,SOIC-8	27MHz High Precision Rail-to-Rail Input and Output Amp		
1	SGM8965A-1	50		No	2.2 ~ 5.5	30	6	0.08 <sup>†</sup>		1	5.3	115	100	Yes	Yes	SOT-23-5,SOIC-8	50MHz High Precision Amp		
2	SGM8965A-2	50		No	2.2 ~ 5.5	30	6	0.35		1	5.3	115	100	Yes	Yes	MSOP-8,SOIC-8	50MHz High Precision Amp		
1	SGM8301	57	110	No	4.5 ~ 12	140	65 <sup>††</sup>	18	12		7.5	105	75	No	Yes	SOT-23-5,SOIC-8,MSOP-8	110MHz High Voltage Rail-to-Rail Output Amp		
2	SGM8302	57	110	No	4.5 ~ 12	140	65 <sup>††</sup>	18	12		7.5	105	75	No	Yes	SOIC-8,MSOP-8	110MHz High Voltage Rail-to-Rail Output Amp		
4	SGM8304	57	110	No	4.5 ~ 12	140	65 <sup>††</sup>	18	12		7.5	105	75	No	Yes	SOIC-14,TSSOP-14	110MHz High Voltage Rail-to-Rail Output Amp		
1	SGM80581	100	220	No	2.5 ~ 5.5	160	7	3		2	4.5	109	71	Yes	Yes	SOT-23-5,SOIC-8	220MHz Rail-to-Rail Input and Output Amp		
2	SGM80582	100	220	No	2.5 ~ 5.5	160	7	3		2	4.5	109	71	Yes	Yes	SOIC-8,MSOP-8	220MHz Rail-to-Rail Input and Output Amp		
4	SGM80584	100	220	No	2.5 ~ 5.5	160	7	3		2	4.5	109	71	Yes	Yes	SOIC-14	220MHz Rail-to-Rail Input and Output Amp		

Notes: † Typical Values @ 25°C  
 †† Typical Values @ 100kHz

# High Precision Operational Amplifiers

The High Precision Operational Amplifier family provides high precision, low noise, low drift, rail-to-rail input and output, and single/dual/quad channel operational amplifiers. The internal auto-zero circuit cancels the input offset voltage and drift over time and temperature, and eliminates the 1/f noise as well. The combination of these characteristics makes them good choices for temperature, position and pressure sensors, medical equipment, strain gauge amplifiers, or any other industrial applications requiring high precision, low noise and long term stability.



Amplifiers per Package	Part Number	V <sub>OS</sub> Max @25°C (mV)	TC of V <sub>OS</sub> Typ (μV/°C)	I <sub>B</sub> Typ (pA)	Shut-down	V <sub>CC</sub> (V)	GBP Typ (MHz)	Slew Rate Typ (V/μs)	E <sub>NOISE</sub> 0.1Hz ~ 10Hz (μV <sub>PP</sub> )	E <sub>NOISE</sub> Typ @1kHz (nV/√Hz)	I <sub>Q</sub> /Amp Typ (μA)	A <sub>VO</sub> Typ (dB)	CMRR Typ (dB)	Rail-to-Rail Input	Rail-to-Rail Output	Package	Features
2	SGM8557-2	0.005	0.027	100	No	2.7 ~ 5.5	15	7	0.5	22	1150	144	120	No	Yes	SOIC-8	High Precision, Low Noise, Zero-Drift
1	SGM8557-3	0.005	0.027	100	Yes	2.7 ~ 5.5	15	7	0.5	22	1150	144	120	No	Yes	SOT-23-6,SOIC-8	High Precision, Low Noise, Zero-Drift, Single Amp with Shutdown
2	SGM8557-5	0.005	0.027	100	Yes	2.7 ~ 5.5	15	7	0.5	22	1150	144	120	No	Yes	MSOP-10	High Precision, Low Noise, Zero-Drift, Dual Amps with Shutdown
1	SGM8263-1	0.0085	0.01	60000	No	4 ~ 36	10	10	0.1	4.5	2500	145	135	No	Yes	SOT-23-5,SOIC-8	10MHz, Ultra Low Noise, Ultra Low Offset
2	SGM8263-2	0.0085	0.01	60000	No	4 ~ 36	10	10	0.1	4.5	2500	145	135	No	Yes	SOIC-8	10MHz, Ultra Low Noise, Ultra Low Offset
1	SGM8249-1	0.01	0.012	100	No	4.5 ~ 36	8	6	0.2	10	850	150	140	No	Yes	SOT-23-5,SOIC-8	High Voltage, High Precision, Low Noise, Rail-to-Rail Output
2	SGM8249-2	0.01	0.012	100	No	4.5 ~ 36	8	6	0.2	10	850	150	140	No	Yes	SOIC-8	High Voltage, High Precision, Low Noise, Rail-to-Rail Output
1	SGM8958-1	0.01	0.03	500	No	1.8 ~ 5.5	1.8	0.7	0.3	12	165	136	125	Yes	Yes	SOT-23-5,SC70-5,SOIC-8	High Precision, Low Noise, Zero-Drift
2	SGM8958-2	0.01	0.03	500	No	1.8 ~ 5.5	1.8	0.7	0.3	12	165	136	125	Yes	Yes	SOIC-8,TDFN-3*3-8L	High Precision, Low Noise, Zero-Drift
1	SGM8959-1	0.01	0.032	350	No	1.8 ~ 5.5	4	1		8	380	127	123	Yes	Yes	SOT-23-5,SC70-5,SOIC-8	High Precision, Low Noise, Zero-Drift
2	SGM8959-2	0.01	0.032	350	No	1.8 ~ 5.5	4	1		8	380	127	123	Yes	Yes	SOIC-8,TDFN-3*3-8L	High Precision, Low Noise, Zero-Drift

## High Precision Operational Amplifiers

Amplifiers per Package	Part Number	V <sub>OS</sub> Max @25°C (mV)	TC of V <sub>OS</sub>			V <sub>CC</sub> (V)	GBP Typ (MHz)	Slew Rate Typ (V/μs)	E <sub>NOISE</sub> 0.1Hz ~ 10Hz (μV <sub>PP</sub> )	E <sub>NOISE</sub> Typ @1kHz (nV/√Hz)	I <sub>Q</sub> /Amp Typ (μA)	A <sub>VO</sub> Typ (dB)	CMRR Typ (dB)	Rail-to-Rail Input	Rail-to-Rail Output	Package	Features
			Typ (μV/°C)	I <sub>B</sub> Typ (pA)	Shut-down												
4	SGM8249-4	0.012	0.014	100	No	4.5 ~ 36	8	5	0.2	12	800	150	140	No	Yes	SOIC-14,TSSOP-14	High Voltage, High Precision, Low Noise, Rail-to-Rail Output
1	SGM8558-1	0.015	0.013	600	No	2.8 ~ 5.5	15	8	0.2	8	860	139	126	No	Yes	SOT-23-5,SOIC-8	High Precision, Low Noise, Zero-Drift
2	SGM8558-2	0.015	0.013	600	No	2.8 ~ 5.5	15	8	0.2	8	860	139	126	No	Yes	TDFN-3×3-8L,SOIC-8	High Precision, Low Noise, Zero-Drift
1	SGM8558-3	0.015	0.013	600	Yes	2.8 ~ 5.5	15	8	0.2	8	860	139	126	No	Yes	SOT-23-6	High Precision, Low Noise, Zero-Drift, Single Amp with Shutdown
4	SGM8558-4	0.015	0.013	600	No	2.8 ~ 5.5	15	8	0.2	8	860	139	126	No	Yes	SOIC-14	High Precision, Low Noise, Zero-Drift
1	SGM8251	0.018	0.02	100	No	4.5 ~ 36	2.8	1.3	0.4	20	450	150	135	No	Yes	SOT-23-5,SOIC-8,MSOP-8	High Voltage, High Precision, Low Noise
2	SGM8252A	0.018	0.02	100	No	4.5 ~ 36	2.8	1.3	0.4	20	450	150	135	No	Yes	SOIC-8,MSOP-8	High Voltage, High Precision, Low Noise
1	SGM8551	0.02	0.02	10	No	2.5 ~ 5.5	1.53	0.9	0.8	47.5	930	145	105	Yes	Yes	SOT-23-5,SOIC-8,MSOP-8	High Precision, Low Noise, Zero-Drift
2	SGM8552	0.02	0.02	10	No	2.5 ~ 5.5	1.53	0.9	0.8	47.5	465	145	105	Yes	Yes	SOIC-8,MSOP-8	High Precision, Low Noise, Zero-Drift
4	SGM8554	0.02	0.07	10	No	2.5 ~ 5.5	1.5	1	1.6	63	465	145	105	Yes	Yes	SOIC-14,TSSOP-14	High Precision, Low Noise, Zero-Drift
1	SGM8255A-1	0.025	0.018	100	No	4.5 ~ 36	8.5	5	0.2	12	850	150	135	No	Yes	SOT-23-5,SOIC-8,MSOP-8	High Voltage, High Precision, Low Noise
2	SGM8255A-2	0.025	0.018	100	No	4.5 ~ 36	8.5	5	0.2	12	850	150	135	No	Yes	SOIC-8,MSOP-8	High Voltage, High Precision, Low Noise
1	SGM8957-1	0.025	0.08	130	No	1.8 ~ 5.5	0.35	0.18	2		20	121	100	Yes	Yes	SOT-23-5,SC70-5,SOIC-8	High Precision, Low Noise, Micro Power, RRIO
2	SGM8957-2	0.025	0.08	130	No	1.8 ~ 5.5	0.35	0.18	2		20	121	100	Yes	Yes	SOIC-8,TDFN-3×3-8L,MSOP-8	High Precision, Low Noise, Micro Power, RRIO
1	SGM8954-1	0.035	0.055	60	No	1.8 ~ 5.5	0.11	0.04	1	65	9	125	108	Yes	Yes	SOT-23-5,SOIC-8,UTDFN-1.6×1.6-6L	Ultra-Low Power, CMOS, Zero-Drift, Rail-to-Rail Input and Output
2	SGM8954-2	0.035	0.055	60	No	1.8 ~ 5.5	0.11	0.04	1	65	9	125	108	Yes	Yes	SOIC-8,MSOP-8,TDFN-2×2-8L	Ultra-Low Power, CMOS, Zero-Drift, Rail-to-Rail Input and Output
1	SGM8275-1	0.035†	0.3	1000	No	3.6 ~ 36	0.6	3	0.3	8.5	750	130	140	No	Yes	SOT-23-5	High Voltage, Precision, Low Noise
2	SGM8275-2	0.035†	0.3	1000	No	3.6 ~ 36	0.6	3	0.3	8.5	750	130	140	No	Yes	SOIC-8	High Voltage, Precision, Low Noise
1	SGM8953-1	0.05	0.06	80	No	1.8 ~ 5.5	0.2	0.05	1	50	17	118	106	Yes	Yes	SOT-23-5,SOIC-8,UTDFN-1.6×1.6-6L	Ultra-Low Power, CMOS, Zero-Drift, Rail-to-Rail Input and Output
2	SGM8953-2	0.05	0.06	80	No	1.8 ~ 5.5	0.2	0.05	1	50	17	118	106	Yes	Yes	SOIC-8,MSOP-8,TDFN-2×2-8L	Ultra-Low Power, CMOS, Zero-Drift, Rail-to-Rail Input and Output
1	SGM8955	0.05	0.08	130	No	1.8 ~ 5.5	0.35	0.18	2		20	121	100	Yes	Yes	SOT-23-5,SC70-5,SOIC-8	High Precision, Low Noise, Micro Power, RRIO
2	SGM8956	0.05	0.08	130	No	1.8 ~ 5.5	0.35	0.18	2		20	121	100	Yes	Yes	SOIC-8,MSOP-8,TDFN-3×3-8L	High Precision, Low Noise, Micro Power, RRIO
1	SGM8250-1	0.05	0.11	80	No	3 ~ 24	0.35	0.09	0.85	40	50	145	130	Yes	Yes	SOT-23-5,SC70-5,SOIC-8	High Voltage, Micro-Power, Zero-Drift
2	SGM8250-2	0.05	0.11	80	No	3 ~ 24	0.35	0.09	0.85	40	50	145	130	Yes	Yes	SOIC-8,TDFN-3×3-8L	High Voltage, Micro-Power, Zero-Drift
1	SGM8967-1	0.05†		5	No	2.1 ~ 5.5	27	30		18	2600	105	100	Yes	Yes	SOT-23-5,SOIC-8	27MHz High Precision Rail-to-Rail Input and Output Amp
2	SGM8967-2	0.05†		5	No	2.1 ~ 5.5	27	30		18	2600	105	100	Yes	Yes	SOIC-8,MSOP-8	27MHz High Precision Rail-to-Rail Input and Output Amp
1	SGM8968-1	0.05†		5	No	2.1 ~ 5.5	11	25		18	1600	105	100	Yes	Yes	SOT-23-5,SOIC-8	11MHz High Precision Rail-to-Rail Input and Output Amp
2	SGM8968-2	0.05†		5	No	2.1 ~ 5.5	11	25		18	1600	105	100	Yes	Yes	SOIC-8	11MHz High Precision Rail-to-Rail Input and Output Amp
1	SGM8555	0.09	0.05	30	No	2.5 ~ 5.5	3.5	3	0.6	21	950	133	98	Yes	Yes	SOT-23-5,SOIC-8,MSOP-8	3.5MHz, 3V/μs, High Precision, Low Noise, RRIO
2	SGM8556	0.09	0.05	30	No	2.5 ~ 5.5	3.5	3	0.6	21	950	133	98	Yes	Yes	SOIC-8,MSOP-8	3.5MHz, 3V/μs, High Precision, Low Noise, RRIO
1	SGM8581	0.1	0.1	15	No	2.5 ~ 5.5	1.45	0.75	0.85	47.5	445	145	90	Yes	Yes	SOT-23-5,SOIC-8,MSOP-8	High Precision, Low Noise, Zero-Drift
2	SGM8582	0.1	0.1	15	No	2.5 ~ 5.5	1.5	0.9	0.8	49	430	145	95	Yes	Yes	SOIC-8,MSOP-8	High Precision, Low Noise, Zero-Drift
4	SGM8584	0.1	0.15	60	No	2.5 ~ 5.5	1.5	0.9	1.4	78	430	135	92	Yes	Yes	SOIC-14,TSSOP-14	High Precision, Low Noise, Zero-Drift
1	SGMOP17C	0.12	0.02	100	No	4.5 ~ 36	2.8	1.3	0.4	20	450	150	135	No	Yes	SOT-23-5	High Voltage, High Precision, Low Noise
2	SGMOP17C-2	0.12	0.02	100	No	4.5 ~ 36	2.8	1.3	0.4	20	450	150	135	No	Yes	SOIC-8	High Voltage, High Precision, Low Noise
1	SGMOP07E	0.15	0.3	1000	No	3.6 ~ 36	0.6	3	0.3	8.5	750	130	140	No	Yes	SOIC-8	High Voltage, High Precision, Low Noise

Notes : † Typical Values @ 25°C  
 †† Typical Values @ 100kHz

# High Precision Operational Amplifiers

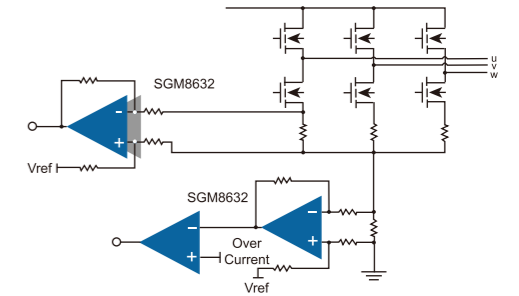
Amplifiers per Package	Part Number	V <sub>OS</sub> Max @25°C (mV)	TC of V <sub>OS</sub>			V <sub>CC</sub> (V)	GBP Typ (MHz)	Slew Rate Typ (V/μs)	E <sub>NOISE</sub> 0.1Hz ~ 10Hz (μV <sub>PP</sub> )	E <sub>NOISE</sub> Typ @1kHz (nV/√Hz)	I <sub>Q</sub> /Amp Typ (μA)	A <sub>VO</sub> Typ (dB)	CMRR Typ (dB)	Rail-to -Rail Input	Rail-to -Rail Output	Package	Features
			Typ (μV/°C)	I <sub>B</sub> Typ (pA)	Shut- down												
1	SGM8040-1	0.23	1	10	No	1.4 ~ 5.5	0.011	0.004	5	180	0.55	120	92	Yes	Yes	SOT-23-5,SC70-5,SOIC-8	High Precision, Unity Gain Stable, RRIO
2	SGM8040-2	0.23	1	10	No	1.4 ~ 5.5	0.011	0.004	5	180	0.55	120	92	Yes	Yes	SOIC-8,TDFN-2×2-8L	High Precision, Unity Gain Stable, RRIO
1	SGM8295-1	0.25	0.4	1000	No	3.6 ~ 36	9	8	0.28	4.5	1500	130	140	No	Yes	SOIC-8,SOT-23-5	High Voltage, High Precision, Low Noise
2	SGM8295-2	0.25	0.4	1000	No	3.6 ~ 36	9	8	0.28	4.5	1500	130	140	No	Yes	SOIC-8,MSOP-8	High Voltage, High Precision, Low Noise
4	SGM8295-4	0.25	0.4	1000	No	3.6 ~ 36	9	8	0.28	4.5	1500	130	140	No	Yes	SOIC-14	High Voltage, High Precision, Low Noise
1	SGM8965-1	0.25	1.2	0.5	No	2.2 ~ 5.5	50	30	5	4.5 <sup>††</sup>	5300	115	100	Yes	Yes	SOT-23-5,SOIC-8	50MHz, High Precision Amp
2	SGM8965-2	0.25	1.2	0.5	No	2.2 ~ 5.5	50	30	5	4.5 <sup>††</sup>	5300	115	100	Yes	Yes	SOIC-8,MSOP-8	50MHz, High Precision Amp
2	SGM8261-2	0.35	1	40000	No	3.6 ~ 36	16	16	0.1	1.6	3800	140	135	No	Yes	TDFN-3×3-8AL,TDFN-3×3-8BL,SOIC-8,MSOP-8	High Voltage, High Precision, Ultra Low Noise, HiFi Audio Amp
2	SGM8262-2	0.5	0.5	40000	No	4.5 ~ 36	50	33		3.5	9000	110	125	No	Yes	SOIC-8,TDFN-3×3-8BL	50MHz, Ultra Low Noise, HiFi High Output Current Audio Amp
1	SGM8925	0.6	2.5	1	No	1.6 ~ 5.5	0.11	0.04		105	6.4	93	85	No	Yes	SOT-23-5,SC70-5,SOIC-8,MSOP-8	High Precision, Very Low Quiescent Current, Low Side Current Sense
1	SGM8927	0.6	2.5	1	Yes	1.6 ~ 5.5	0.11	0.04		105	6.4	93	85	No	Yes	SOT-23-6,SOIC-8,MSOP-8	High Precision, Very Low Quiescent Current, Low Side Current Sense
1	SGM8951	0.8			No	1.8 ~ 5.5	0.11	0.045	3.5	115	26	92	92	Yes	Yes	SOT-23-5,SOIC-8	High Precision, Low Noise, Micro Power, RRIO
2	SGM8952	0.8			No	1.8 ~ 5.5	0.11	0.045	3.5	115	17	92	92	Yes	Yes	SOIC-8,MSOP-8	High Precision, Low Noise, Micro Power, RRIO
1	SGM8931	0.9	1.5	3	No	1.8 ~ 5.5	1.5	0.8		30	80	100	86	No	Yes	SOT-23-5,SC70-5,SOIC-8,MSOP-8	High Precision, Low Power, Low Noise, Rail-to-Rail Output
2	SGM8932	0.9	1.5	3	No	1.8 ~ 5.5	1.5	0.8		30	80	100	86	No	Yes	SOIC-8,MSOP-8	High Precision, Low Power, Low Noise, Rail-to-Rail Output
1	SGM8933	0.9	1.5	3	Yes	1.8 ~ 5.5	1.5	0.8		30	80	100	86	No	Yes	SOT-23-6,SOIC-8,MSOP-8	High Precision, Low Power, Low Noise, Rail-to-Rail Output
4	SGM8934	0.9	1.5	3	No	1.8 ~ 5.5	1.5	0.8		30	80	100	86	No	Yes	SOIC-14,TSSOP-14	High Precision, Low Power, Low Noise, Rail-to-Rail Output
2	SGM8922A	0.9	1.6		No	3.0 ~ 5.5	12.7	6.8		6	3000	104	108	No	Yes	SOIC-8,MSOP-8,TSSOP-8	High Precision, 300mA Output Short Circuit Current, Rail-to-Rail Output
2	SGM8926	0.9	2.5	1	No	1.6 ~ 5.5	0.11	0.04		105	6.4	93	85	No	Yes	SOIC-8,MSOP-8	High Precision, Very Low Quiescent Current, Low Side Current Sense
2	SGM8924A	1	1.5		No	3.0 ~ 5.5	8.9	5.1		6	5500	105	102	No	Yes	MSOP-10	High Precision, 300mA Output Short Circuit Current, Rail-to-Rail Output
1	SGM8273-1	1	2	10	No	3.3 ~ 36	4	6	1.5	9	600	90	86	Yes	Yes	SOT-23-5,SOIC-8,MSOP-8	Low Noise, High Precision, High Voltage RRIO
2	SGM8273-2	1	2	10	No	3.3 ~ 36	4	6	1.5	9	600	90	86	Yes	Yes	SOIC-8	Low Noise, High Precision, High Voltage RRIO
4	SGM8273-4	1	2	10	No	3.3 ~ 36	4	6	1.5	9	600	90	86	Yes	Yes	SOIC-14	Low Noise, High Precision, High Voltage RRIO
1	SGM8240-1	1	3	5	No	2.7 ~ 24	0.1	0.05	3	100	2.8	120	110	Yes	Yes	SOT-23-5,SC70-5	High Voltage, Precision, Micro Power, Low Noise
2	SGM8240-2	1	3	5	No	2.7 ~ 24	0.1	0.05	3	100	2.8	120	110	Yes	Yes	SOIC-8,MSOP-8,TDFN-2×3-8L	High Voltage, Precision, Micro Power, Low Noise

Notes : † Typical Values @ 25°C  
 †† Typical Values @ 100kHz



# Low Noise Operational Amplifiers

The Low Noise Operational Amplifier family provides rail-to-rail input and output with an excellent speed/power consumption ratio. They are designed to provide optimal performance in low noise systems, providing rail-to-rail output swing into heavy loads. The combination of these characteristics makes them extremely suitable for sensor interfaces, high speed current sensing and active filtering.



Amplifiers per Package	Part Number	E <sub>NOISE</sub> Typ @1kHz (nV/√Hz)	I <sub>NOISE</sub> Typ @1kHz (pA/√Hz)	GBP Typ (MHz)	Slew Rate Typ (V/μs)	I <sub>OUT</sub> Min @25°C (mA)	V <sub>OS</sub> Max @25°C (mV)	TC of V <sub>OS</sub> Typ (μV/°C)	I <sub>B</sub> Typ (pA)	V <sub>CC</sub> (V)	I <sub>Q</sub> /Amp Typ (mA)	A <sub>VO</sub> Typ (dB)	CMRR Typ (dB)	Rail-to-Rail I/O	Package	Features
1	SGM8261-1	1.6	6	16	16	65 <sup>†</sup>	0.35	1	40000	3.6 ~ 36	3.8	140	135	Output	SOIC-8	16MHz, Ultra Low Noise, HiFi Audio Amp
2	SGM8261-2	1.6	6	16	16	65 <sup>†</sup>	0.35	1	40000	3.6 ~ 36	3.8	140	135	Output	TDFN-3x3-8AL,TDFN-3x3-8BL,SOIC-8,MSOP-8	16MHz, Ultra Low Noise, HiFi Audio Amp
2	SGM8261-5	1.6	6	16	16	110 <sup>†</sup>	0.35	1	40000	3.6 ~ 36	4.1	150	136	Output	TDFN-3x3-10L,MSOP-10	16MHz, Ultra Low Noise, HiFi Audio Amp
2	SGM8264-2	1.6	6	16	16	110 <sup>†</sup>	0.35	1	40000	3.6 ~ 36	4.1	140	120	Output	SOIC-8	16MHz, Ultra Low Noise, HiFi Audio Amp
2	SGM8262-2	3.5 <sup>†††</sup>	4 <sup>†††</sup>	50	33	200 <sup>†</sup>	0.5	0.5	40000	4.5 ~ 36	9	110	125	Output	SOIC-8,TDFN-3x3-8BL	50MHz, Ultra Low Noise, HiFi High Output Current Audio Amp
1	SGM8965-1	4.5 <sup>†††</sup>	0.125 <sup>††††</sup>	50	30	70 <sup>†</sup>	0.25	1.2	0.5	2.2 ~ 5.5	5.3	115	100	Yes	SOT-23-5,SOIC-8	50MHz, High Precision Amp
2	SGM8965-2	4.5 <sup>†††</sup>	0.125 <sup>††††</sup>	50	30	70 <sup>†</sup>	0.25	1.2	0.5	2.2 ~ 5.5	5.3	115	100	Yes	SOIC-8,MSOP-8	50MHz, High Precision Amp
1	SGM8263-1	4.5	5	10	10	36	0.0085	0.01	60000	4 ~ 36	2.5	145	135	Output	SOT-23-5,SOIC-8	10MHz, Ultra Low Noise, Ultra Low Offset
1	SGM8295-1	4.5	2	9	8	28	0.25	0.4	1000	3.6 ~ 36	1.5	130	140	Output	SOIC-8,SOT-23-5	9MHz, Low Noise, High Voltage Amp
2	SGM8263-2	4.5	5	10	10	36	0.0085	0.01	60000	4 ~ 36	2.5	145	135	Output	SOIC-8	10MHz, Ultra Low Noise, Ultra Low Offset
2	SGM8295-2	4.5	2	9	8	28	0.25	0.4	1000	3.6 ~ 36	1.5	130	140	Output	SOIC-8,MSOP-8	9MHz, Low Noise, High Voltage Amp
4	SGM8295-4	4.5	2	9	8	28	0.25	0.4	1000	3.6 ~ 36	1.5	130	140	Output	SOIC-14	9MHz, Low Noise, High Voltage Amp
2	SGM5532	5	1	20	18	27	0.5	0.6	550000	5 ~ 36	4.25	140	140	Output	SOIC-8	High Voltage, Low Noise
1	SGM8959-1	8		4	1	25	0.01	0.032	350	1.8 ~ 5.5	380	127	123	Yes	SOT-23-5,SC70-5,SOIC-8	High Precision, Low Noise, Zero-Drift
2	SGM8959-2	8		4	1	25	0.01	0.032	350	1.8 ~ 5.5	380	127	123	Yes	SOIC-8,TDFN-3x3-8L	High Precision, Low Noise, Zero-Drift
1	SGM8275-1	8.5	1.5	3	4	13	0.3	0.5	1000	3.6 ~ 36	0.9	120	140	Output	SOT-23-5,SOIC-8	3MHz, Low Noise, High Voltage Amp
1	SGM8275-3	8.5	1.5	3	4	13	0.3	0.5	1000	3.6 ~ 36	0.9	120	140	Output	SOT-23-6	3MHz, Low Noise, High Voltage, Single Amp with Shutdown
1	SGMOP07E	8.5	1.5	0.6	3	21	0.15	0.3	1000	3.6 ~ 36	0.75	130	140	Output	SOIC-8	High Voltage, High Precision, Low Noise, Rail-to-Rail Output
2	SGM8275-2	8.5	1.5	3	4	13	0.3	0.5	1000	3.6 ~ 36	0.9	120	140	Output	SOIC-8,MSOP-8	3MHz, Low Noise, High Voltage Amp
1	SGM8651	8.7 <sup>††</sup>		50	66	100	8	4.5	6	2.5 ~ 5.5	2.3	80	80	Output	SOT-23-5,SOIC-8	50MHz/66V/μs, Low Noise, Rail-to-Rail Output
1	SGM8653	8.7 <sup>††</sup>		50	66	100	8	4.5	6	2.5 ~ 5.5	2.3	80	80	Output	SOT-23-6,SOIC-8	50MHz/66V/μs, Low Noise, Single Amp with Shutdown, Rail-to-Rail Output
2	SGM8652	8.7 <sup>††</sup>		50	66	100	8	4.5	6	2.5 ~ 5.5	2.3	80	80	Output	SOIC-8,MSOP-8	50MHz/66V/μs, Low Noise, Rail-to-Rail Output
2	SGM8655	8.7 <sup>††</sup>		50	66	100	8	4.5	6	2.5 ~ 5.5	2.3	80	80	Output	MSOP-10	50MHz/66V/μs, Low Noise, Dual Amps with Shutdown, Rail-to-Rail Output
4	SGM8654	8.7 <sup>††</sup>		50	66	100	8	4.5	6	2.5 ~ 5.5	2.3	80	80	Output	SOIC-14,TSSOP-14	50MHz/66V/μs, Low Noise, Rail-to-Rail Output
1	SGM8273-1	9	0.7	4	6	18	1	2	10	3.3 ~ 36	0.6	90	86	Yes	SOT-23-5,SOIC-8,MSOP-8	High Voltage, Precision, Rail-to-Rail Input and Output
2	SGM8273-2	9	0.7	4	6	18	1	2	10	3.3 ~ 36	0.6	90	86	Yes	SOIC-8	High Voltage, Precision, Rail-to-Rail Input and Output
4	SGM8273-4	9	0.7	4	6	18	1	2	10	3.3 ~ 36	0.6	90	86	Yes	SOIC-14	High Voltage, Precision, Rail-to-Rail Input and Output
1	SGM8276-1	10	0.5	10	8	40	1.5	1	50	3.3 ~ 36	1.4	120	80	Yes	SOT-23-5	Low Noise, High Precision, High Voltage, RRIO
2	SGM8276-2	10	0.5	10	8	40	1.5	1	50	3.3 ~ 36	1.4	120	80	Yes	SOIC-8	Low Noise, High Precision, High Voltage, RRIO
4	SGM8276-4	10	0.5	10	8	40	1.5	1	50	3.3 ~ 36	1.4	120	80	Yes	SOIC-14	Low Noise, High Precision, High Voltage, RRIO
1	SGM8958-1	12		1.8	0.7	17	0.01	0.03	500	1.8 ~ 5.5	165	136	125	Yes	SOT-23-5,SC70-5,SOIC-8	High Precision, Low Noise, Zero-Drift
2	SGM8958-2	12		1.8	0.7	17	0.01	0.03	500	1.8 ~ 5.5	165	136	125	Yes	SOIC-8,TDFN-3x3-8L	High Precision, Low Noise, Zero-Drift
4	SGM8634	12	0.003	6	3.7	49	3.5	2.4	1	2.5 ~ 5.5	0.47	97	83	Yes	SOIC-14,TSSOP-14	6MHz/3.7V/μs, Low Noise, RRIO

Notes : † Typical Values @ 25°C  
 †† Typical Values @ 1MHz  
 ††† Typical Values @ 100kHz  
 †††† Typical Values @ 10kHz

# Low Noise Operational Amplifiers

Amplifiers per Package	Part Number	E <sub>NOISE</sub> Typ @1kHz (nV/√Hz)	I <sub>NOISE</sub> Typ @1kHz (pA/√Hz)	GBP Typ (MHz)	Slew Rate		I <sub>OUT</sub> Min @25°C (mA)	V <sub>OS</sub> Max @25°C (mV)	TC of V <sub>OS</sub> Typ (μV/°C)	I <sub>B</sub> Typ (pA)	V <sub>CC</sub> (V)	I <sub>Q</sub> /Amp Typ (mA)	A <sub>VO</sub> Typ (dB)	CMRR Typ (dB)	Rail-to -Rail I/O	Package	Features
					Typ (V/μs)	Max @25°C (mA)											
1	SGM721	12.5		11	8.5	52	4	2.1	1	2.1 ~ 5.5	1.2	89	75	Yes	SOT-23-5,SOIC-8,SC70-5	11MHz/8.5V/μs, Low Noise, RRIO	
1	SGM723	12.5		11	8.5	52	4	2.1	1	2.1 ~ 5.5	1.2	89	75	Yes	SOT-23-6,SOIC-8	11MHz/8.5V/μs, Low Noise, Single Amp with Shutdown, RRIO	
2	SGM722	12.5		11	8.5	52	4	2.1	1	2.1 ~ 5.5	1.1	89	75	Yes	SOIC-8,MSOP-8,TSSOP-8	11MHz/8.5V/μs, Low Noise, RRIO	
4	SGM724	12.5		11	8.5	52	4	2.1	1	2.1 ~ 5.5	1.1	89	75	Yes	SOIC-14,TSSOP-14	11MHz/8.5V/μs, Low Noise, RRIO	
1	SGM8631	13		6	3.7	40	3.5	2.4	1	2 ~ 5.5	0.57	86	76	Yes	SOT-23-5,SOIC-8,SC70-5	6MHz/3.7V/μs, Low Noise, RRIO	
1	SGM8633	13		6	3.7	40	3.5	2.4	1	2 ~ 5.5	0.57	86	76	Yes	SOT-23-6,SOIC-8	6MHz/3.7V/μs, Low Noise, Single Amp with Shutdown, RRIO	
2	SGM8632	13		6	3.7	40	3.5	2.4	1	2 ~ 5.5	0.48	86	76	Yes	MSOP-8,SOIC-8	6MHz/3.7V/μs, Low Noise, RRIO	
1	SGM8621	17.5		3	1.7	38	3	2.7	1	2 ~ 5.5	0.27	90	71	Yes	SOT-23-5,SOIC-8,SC70-5	3MHz/1.7V/μs, Low Noise, RRIO	
1	SGM8623	17.5		3	1.7	38	3	2.7	1	2 ~ 5.5	0.27	90	71	Yes	SOT-23-6,SOIC-8	3MHz/1.7V/μs, Low Noise, Single Amp with Shutdown, RRIO	
2	SGM8622	17.5		3	1.7	38	3	2.7	1	2 ~ 5.5	0.21	90	71	Yes	SOIC-8,MSOP-8	3MHz/1.7V/μs, Low Noise, RRIO	
4	SGM8624	17.5		3	1.7	38	3	2.7	1	2 ~ 5.5	0.21	90	71	Yes	SOIC-14,TSSOP-14	3MHz/1.7V/μs, Low Noise, RRIO	
1	SGM8967-1	18		27	30	80 <sup>†</sup>	0.05 <sup>†</sup>		5	2.1 ~ 5.5	2.6	105	100	Yes	SOT-23-5,SOIC-8	27MHz High Precision Rail-to-Rail Input and Output Amp	
1	SGM8968-1	18		11	25	1.6 <sup>†</sup>	0.05 <sup>†</sup>		5	2.1 ~ 5.5	1.6	105	100	Yes	SOT-23-5,SOIC-8	11MHz High Precision Rail-to-Rail Input and Output Amp	
2	SGM8967-2	18		27	30	80 <sup>†</sup>	0.05 <sup>†</sup>		5	2.1 ~ 5.5	2.6	105	100	Yes	SOIC-8,MSOP-8	27MHz High Precision Rail-to-Rail Input and Output Amp	
2	SGM8968-2	18		11	25	1.6 <sup>†</sup>	0.05 <sup>†</sup>		5	2.1 ~ 5.5	1.6	105	100	Yes	SOIC-8	11MHz High Precision Rail-to-Rail Input and Output Amp	

Notes : † Typical Values @ 25°C

## Special Function Operational Amplifiers

The Special Function Operational Amplifier family provides fixed-gain Microphone pre-amplifiers with integrated bias; PIR sensor single chip signal conditioning front ends; fixed gain low side and high side difference amplifiers; industry standard crossover distortion-free operational amplifiers;

Amplifiers per Package	Part Number	Settling Time to 0.1% ( $\mu$ s)	GBP Typ (MHz)	Slew Rate Typ (V/ $\mu$ s)	I <sub>OUT</sub> Typ (mA)	V <sub>OS</sub> Max @25°C (mV)	TC of V <sub>OS</sub> Typ ( $\mu$ V/°C)	I <sub>B</sub> Typ (pA)	V <sub>CC</sub> (V)	I <sub>Q</sub> /Amp Typ ( $\mu$ A)	A <sub>VO</sub> Typ (dB)	CMRR Typ (dB)	Rail-to-Rail I/O	Package	Features
1	SGM8477-1B		0.15 @-3dB	0.4	50	0.01	0.02		1.8 ~ 5.5	380		108	Yes	SC70-6,UTQFN-1.8x1.4-10L	1.8V to 5.5V, Low Noise, Zero-Drift Operational Amplifier
1	SGM8477-1G		0.032 @-3dB	0.15	50	0.01	0.02		1.8 ~ 5.5	380		108	Yes	SC70-6,UTQFN-1.8x1.4-10L	1.8V to 5.5V, Low Noise, Zero-Drift Operational Amplifier
1	SGM8478-1C		0.2 @-3dB	3.5	55	0.003 <sup>†</sup>		8x10 <sup>7</sup>	4.5 ~ 36	1500		110	Output	SOIC-8,TDFN-3x3-8L	High Voltage, High Precision, Low Noise, Over the Rail Difference Amplifier
1	SGM8478-1H		0.04 @-3dB	1	40	0.01 <sup>†</sup>		8x10 <sup>6</sup>	4.5 ~ 36	5000		102	Output	SOIC-8,TDFN-3x3-8L	High Voltage, High Precision, Low Noise, Over the Rail Difference Amplifier
2	SGM8480-2	0.7	7.5	6	85	0.025	0.2	500	4.5 ~ 18	4200 <sup>††</sup>	145	140	Output	TSSOP-14	15V Single-Supply, Dual Operation Amplifier with $\pm$ 10V Output Range
1	SGM8941	2	1.5	0.8	35	0.9	3	3	1.8 ~ 5.5	120	90	90	Yes	SOT-23-5,SOIC-8	Crossover Distortion Free, 0.9mV V <sub>OS</sub> , Low Bias Current
2	SGM8942	2	1.5	0.8	35	0.9	3	3	1.8 ~ 5.5	120	90	90	Yes	SOIC-8,MSOP-8	Crossover Distortion Free, 0.9mV V <sub>OS</sub> , Low Bias Current

Notes: † Typical Values @ 25°C  
 †† Total Quiescent Current  
 ††† Typical Values @ G = 10

## High Output Operational Amplifiers

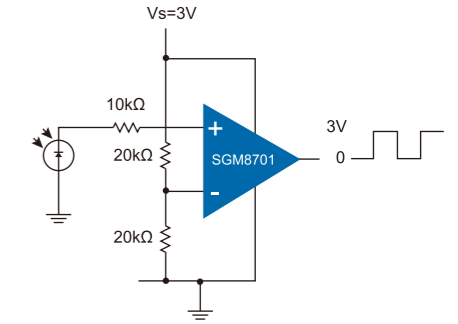
Amplifiers per Package	Part Number	Transient Output Peak Current (mA)	Settling Time to 0.1% ( $\mu$ s)	GBP Typ (MHz)	Slew Rate Typ (V/ $\mu$ s)	I <sub>OUT</sub> Typ (mA)	V <sub>OS</sub> Max @25°C (mV)	TC of V <sub>OS</sub> Typ ( $\mu$ V/°C)	I <sub>B</sub> Typ (pA)	V <sub>CC</sub> (V)	I <sub>Q</sub> /Amp Typ ( $\mu$ A)	A <sub>VO</sub> Typ (dB)	CMRR Typ (dB)	Rail-to-Rail I/O	Package	Features
1	SGM8557-1	240		15	7	240	0.005	0.027	100	2.7 ~ 5.5	1150	144	120	Output	SOT-23-5,SOIC-8,MSOP-8	High Precision, Low Noise, Zero-Drift
2	SGM8557-2	240		15	7	240	0.005	0.027	100	2.7 ~ 5.5	1150	144	120	Output	SOIC-8	High Precision, Low Noise, Zero-Drift
1	SGM8557-3	240		15	7	240	0.005	0.027	100	2.7 ~ 5.5	1150	144	120	Output	SOT-23-6,SOIC-8	High Precision, Low Noise, Zero-Drift, Single Amp with Shutdown
2	SGM8557-5	240		15	7	240	0.005	0.027	100	2.7 ~ 5.5	1150	144	120	Output	MSOP-10	High Precision, Low Noise, Zero-Drift
1	SGM8425	336	0.34	9	14	80	6.5	4.9		4.5 ~ 30	1600	92	71	Yes	SOT-23-5,SOIC-8,MSOP-8	336mA Peak Output Current, 14V/ $\mu$ s, 30V <sub>CC</sub> , Single V <sub>COM</sub> Buffer
2	SGM8426	336	0.34	9	14	80	6.5	4.9		4.5 ~ 30	1600	92	71	Yes	SOIC-8,MSOP-8	336mA Peak Output Current, 14V/ $\mu$ s, 30V <sub>CC</sub> , Dual V <sub>COM</sub> Buffer
4	SGM8428	336	0.34	9	14	80	6.5	4.9		4.5 ~ 30	1600	92	71	Yes	SOIC-14,TSSOP-14	336mA Peak Output Current, 14V/ $\mu$ s, 30V <sub>CC</sub> , Quad V <sub>COM</sub> Buffer
1	SGM8416-1	800	0.16	25	65	300	10	3.6	1000	4.5 ~ 26.5	2600	120	72	Yes	TDFN-3x3-8L	0.8A Peak Output Current, 65V/ $\mu$ s, 26.5V <sub>CC</sub> , Single V <sub>COM</sub> Buffer
2	SGM8416-2	800	0.16	25	65	300	10	3.6	1000	4.5 ~ 26.5	2600	120	72	Yes	MSOP-8 (Exposed Pad)	0.8A Peak Output Current, 65V/ $\mu$ s, 26.5V <sub>CC</sub> , Dual V <sub>COM</sub> Buffer
4	SGM8416-4	800	0.16	25	65	300	10	3.6	1000	4.5 ~ 26.5	2600	120	72	Yes	TSSOP-14 (Exposed Pad)	0.8A Peak Output Current, 65V/ $\mu$ s, 26.5V <sub>CC</sub> , Quad V <sub>COM</sub> Buffer
1	SGM8417-1	1500	0.14	28	65	400	10	3.6	1000	4.5 ~ 26.5	3300	120	72	Yes	TDFN-3x3-8L	1.5A Peak Output Current, 65V/ $\mu$ s, 26.5V <sub>CC</sub> , Single V <sub>COM</sub> Buffer
2	SGM8417-2	1500	0.14	28	65	400	10	3.6	1000	4.5 ~ 26.5	3300	120	72	Yes	MSOP-8 (Exposed Pad)	1.5A Peak Output Current, 65V/ $\mu$ s, 26.5V <sub>CC</sub> , Dual V <sub>COM</sub> Buffer
4	SGM8417-4	1500	0.14	28	65	400	10	3.6	1000	4.5 ~ 26.5	3300	120	72	Yes	TSSOP-14 (Exposed Pad)	1.5A Peak Output Current, 65V/ $\mu$ s, 26.5V <sub>CC</sub> , Quad V <sub>COM</sub> Buffer
2	SGM8423-2A	2000		63	104/63	210	10/3.5		100/160	5 ~ 24	145/20500	106/86	104/106	No	TQFN-4x4-20L	High Speed, Low Noise, 2A PLC Driver
1	SGM8418-1	3000	0.14	28	65	400	10	3.6	1000	4.5 ~ 26.5	4800	120	72	Yes	TDFN-3x3-8L	3A Peak Output Current, 65V/ $\mu$ s, 26.5V <sub>CC</sub> , Single V <sub>COM</sub> Buffer
2	SGM8418-2	3000	0.14	28	65	400	10	3.6	1000	4.5 ~ 26.5	4800	120	72	Yes	MSOP-8 (Exposed Pad)	3A Peak Output Current, 65V/ $\mu$ s, 26.5V <sub>CC</sub> , Dual V <sub>COM</sub> Buffer
4	SGM8418-4	3000	0.14	28	65	400	10	3.6	1000	4.5 ~ 26.5	4800	120	72	Yes	TSSOP-14 (Exposed Pad)	3A Peak Output Current, 65V/ $\mu$ s, 26.5V <sub>CC</sub> , Quad V <sub>COM</sub> Buffer
1	SGM8421-1	3000	0.14	28	65	400	10	3.5	1000	4.5 ~ 26.5	4800	120	72	Yes	TO-263-A	High Speed, Low Noise, 400mA Continuous Output Current Resolver Driver
2	SGM8422			2.4	2	80	5.9		10	4.5 ~ 30	660	113	73	Yes	SOIC-8,MSOP-8	Low Power, 30V <sub>CC</sub> , Dual V <sub>COM</sub> Buffer for Small Panel
4	SGM8424			2.4	2	80	5.9		10	4.5 ~ 30	660	113	73	Yes	SOIC-14,TSSOP-14	Low Power, 30V <sub>CC</sub> , Quad V <sub>COM</sub> Buffer for Small Panel

# Tiny Package Operational Amplifiers

Amplifiers per Package	Part Number	Estimated Package Size (W×L) (mm <sup>2</sup> )	V <sub>OS</sub> Max @25°C (mV)	TC of V <sub>OS</sub> Typ (μV/°C)	GBP Typ (MHz)	A <sub>VO</sub> Typ (dB)	I <sub>B</sub> Typ (pA)	V <sub>CC</sub> (V)	I <sub>O</sub> /Amp Typ (μA)	Settling Time to 0.1% (μs)	Slew Rate Typ (V/μs)	I <sub>OUT</sub> Typ (mA)	CMRR Typ (dB)	Rail-to-Rail I/O	Package	Features
1	SGM8604-1	1.45	0.01	0.017	15	145	200	2.7 ~ 5.5	1200		7	232	120	No	UTDFN-1.45×1-6L	15MHz, 7V/μs, High-Output-Drive, High Precision, Low Noise, Single Amp
1	SGM8604-3	1.45	0.01	0.017	15	145	200	2.7 ~ 5.5	1200		7	232	120	No	UTDFN-1.45×1-6L	15MHz, 7V/μs, High-Output-Drive, High Precision, Low Noise, Single Amp with Shutdown
1	SGM8605-1	1.45	4.5		12.5	88	2	2.1 ~ 5.5	1200	0.21	8.5	78	79	Yes	UTDFN-1.45×1-6L	Ultra Tiny Package, Low Noise
2	SGM8558-2	2.1	0.015	0.013	15	139	600	2.8 ~ 5.5	860		8	230	126	No	TDFN-3×3-8L,SOIC-8,WLCSP-1.45×1.45-8B	High Precision, Low Noise, Zero-Drift
1	SGM8954-1	2.56	0.035	0.055	0.11	125	60	1.8 ~ 5.5	9		0.04	8	108	Yes	SOT-23-5,SOIC-8,UTDFN-1.6×1.6-6L	Ultra-Low Power, CMOS, Zero-Drift, Rail-to-Rail Input and Output
1	SGM8049-1	4	0.85	0.6	0.12	118	1	1.8 ~ 5.5	2.5		0.08	20	100	Yes	SC70-5,SOT-23-5,TDFN-2×2-6L	Pico Amp Input Current, Micro Power, RRIO
1	SGM8601	4	4	8.7	11	92	1	2.1 ~ 5.5	1100	0.21	8.5	63	82	Yes	TDFN-2×2-8L	Tiny Package, Low Noise
1	SGM8603	4	4.9	2.7	11	91	1	2.1 ~ 5.5	1100	0.21	8.5	64	83	Yes	TDFN-2×2-6L	Tiny Package, Low Noise
2	SGM4832	4	3.5	2.7	1.1	105	0.5	2.1 ~ 5.5	46	5.3	0.52	75	80	Yes	TDFN-2×2-8L	1.1MHz, 46μA, RRIO CMOS Operational Amplifier
2	SGM8040-2	4	0.23	1	0.011	120	10	1.4 ~ 5.5	0.55		0.004	18	92	Yes	SOIC-8,TDFN-2×2-8L	High Precision, Unity Gain Stable, RRIO
2	SGM8600	4	4	8.7	11	92	1	2.1 ~ 5.5	1100	0.21	8.5	63	82	Yes	TDFN-2×2-8L,SOIC-8	Tiny Package, Positive Offset, Low Noise
2	SGM8956	4	0.05	0.08	0.35	121	130	1.8 ~ 5.5	20		0.18	60	100	Yes	SOIC-8,MSOP-8,TDFN-3×3-8L,TDFN-2×2-8L	High Precision, Low Noise, Micro Power, RRIO
2	SGM8954-2	4	0.035	0.055	0.11	125	60	1.8 ~ 5.5	9		0.04	8	108	Yes	SOIC-8,MSOP-8,TDFN-2×2-8L	Ultra-Low Power, CMOS, Zero-Drift, Rail-to-Rail Input and Output
2	SGM8210-2	6	1	1	1	120	5	3.3 ~ 24	50		0.3		115	Yes	TDFN-2×3-8L,SOIC-8,MSOP-8	High Voltage, Micro Power, Precision
2	SGM8240-2	6	1	3	0.1	120	5	2.7 ~ 24	2.8		0.05	20	110	Yes	TDFN-2×3-8L,SOIC-8,MSOP-8	High Voltage, Micro Power, Precision
2	SGM8602	6	5.1	4.7	12	92	1	2.1 ~ 5.5	1100	0.2	9	65	75	Yes	SOT-23-8,TDFN-2×3-8L	Tiny Package, Low Noise
2	SGM8604-2	6	0.01	0.017	15	145	200	2.7 ~ 5.5	1200		7	232	120	No	TDFN-2×3-8AL	15MHz, 7V/μs, High-Output-Drive, High Precision, Low Noise, Dual Amps
1	SGM8606	9	0.05	0.08	0.35	121	130	1.8 ~ 5.5	20		0.18	18	100	Yes	TDFN-3×3-10L	Current Sensing AFE
2	SGM4834	9	2.6	1.7	10	109		3 ~ 5.5	5500		5.4	212	103	No	TDFN-3×3-10L	Motor/Headset Driver with Shutdown
2	SGM4835	9	5.3	2.7	1.5	84	10	2.1 ~ 5.5	60	3.6	0.63	21	70	Yes	TDFN-3×3-8L	Stereo Headphone Driver
2	SGM8261-2	9	0.35	1	16	140	40000	3.6 ~ 36	3800		16	65	135	No	SOIC-8,MSOP-8,TDFN-3×3-8AL,TDFN-3×3-8BL	16MHz, Ultra Low Noise, HiFi Audio Amp
2	SGM8261-5	9	0.35	1	16	150	40000	3.6 ~ 36	4100		16	110	136	No	MSOP-10,TDFN-3×3-10L	16MHz, Ultra Low Noise, HiFi Audio Amp
2	SGM8604-5	9	0.01	0.017	15	145	200	2.7 ~ 5.5	1200		7	232	120	No	TDFN-3×3-10L	15MHz, 7V/μs, High-Output-Drive, High Precision, Low Noise, Dual Amps with Shutdown
2	SGM8957-2	9	0.025	0.08	0.35	121	130	1.8 ~ 5.5	20		0.18	60	100	Yes	SOIC-8,MSOP-8,TDFN-3×3-8L	High Precision, Low Noise, Micro Power, RRIO
2	SGM8958-2	9	0.01	0.03	1.8	136	500	1.8 ~ 5.5	165		0.7		125	Yes	SOIC-8,TDFN-3×3-8L	High Precision, Low Noise, Zero-Drift
2	SGM8959-2	9	0.01	0.032	4	127	350	1.8 ~ 5.5	380		1		123	Yes	SOIC-8,TDFN-3×3-8L	High Precision, Low Noise, Zero-Drift
4	SGM3130	9	5	2.7	1	84	10	2.1 ~ 5.5	60	5.3	0.52	75	68	Yes	TQFN-3×3-16L	1MHz, 60μA, RRIO CMOS Operational Amplifier
4	SGM8044	9	2.5	2.5	0.015	93	1	1.4 ~ 5.5	0.67		0.0034	23	83	Yes	SOIC-14,TSSOP-14,TQFN-3×3-16L	Very Low Quiescent Current, RRIO
4	SGM8424	9	6		2.4	115	10	4.5 ~ 30	720		2	80	81	Yes	SOIC-14,TSSOP-14,TQFN-3×3-16L	Low Power, 30V <sub>CC</sub> , Quad V <sub>COM</sub> Buffer for Small Panel
3	SGM8140	16	2.5	2	0.005	93	1	1.4 ~ 5.5	1.1		0.0016	24	83	Yes	TQFN-4×4-16L	PIR Sensor AFE Integrate 2 Operational Amplifiers and 1 Comparator

# Nano Power Comparators

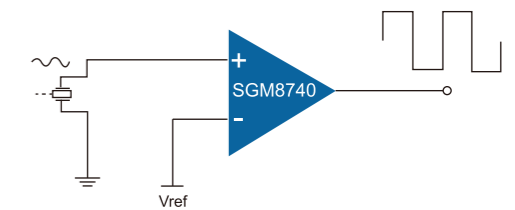
The Nano Power Comparator family provides a typical power supply current as low as 350nA. They have the best-in-class power supply current versus propagation delay performance. The propagation delay is as low as 6µs with 100mV overdrive at 1.4V supply. The Nano Power Comparator family also provides different options featuring push-pull output stage, PFET/NFET open-drain output stage, latch enable, reference output and ultra small DFN packages.



Comparators per Package	Part Number	I <sub>Q</sub> /Comp Typ (nA)	Latch Enable	V <sub>CC</sub> (V)	V <sub>OS</sub> Max @25°C (mV)	t <sub>PD</sub> , H to L @V <sub>CC</sub> = 5V (µs)	t <sub>PD</sub> , L to H @V <sub>CC</sub> = 5V (µs)	Logic Output	Reference Output (V)	Rise Time @V <sub>CC</sub> = 5V (ns)	Fall Time @V <sub>CC</sub> = 5V (ns)	Package	Features
1	SGM8701	350	No	1.4 ~ 5.5	3	6	33	Push-Pull	NA	85	60	SOT-23-5,SC70-5	Ultra Low Power, Push-Pull, Small Package
1	SGM8702	350	No	1.4 ~ 5.5	3	6	33	Open-Drain (PFET)	NA	85	NA	SOT-23-5,SC70-5	Ultra Low Power, PFET Open-Drain, Small Package
1	SGM8703	350	Yes	1.4 ~ 5.5	3	6	33	Push-Pull	NA	85	60	SOT-23-6	Latch Enable, Ultra Low Power, Push-Pull, Small Package
1	SGM8704	350	Yes	1.4 ~ 5.5	3	6	33	Push-Pull & Invert	NA	85	60	SOIC-8,MSOP-8	Latch Enable, Ultra Low Power, Push-Pull and Inverter
2	SGM8705	350	No	1.4 ~ 5.5	3	6	33	Push-Pull	NA	85	60	SOIC-8,MSOP-8	Ultra Low Power, Push-Pull
1	SGM8707	350	No	1.4 ~ 5.5	3	6	33	Push-Pull	NA	85	60	SOT-23-5,SC70-5	Ultra Low Power, Push-Pull, Small Package
1	SGM8709	350	No	1.4 ~ 5.5	3	5		Open-Drain (NFET)	NA	NA	36	SOT-23-5,SC70-5	Ultra Low Power, NFET Open-Drain, Small Package
2	SGM8712	350	No	1.4 ~ 5.5	3	6	33	Push-Pull	NA	85	60	MSOP-8	Ultra Low Power, Push-Pull
1	SGM8706	2300	Yes	1.8 ~ 5.5	3	5.6	30	Push-Pull	1.2	40	30	SOIC-8,SOT-23-8,SOT-23-6	Internal Reference, Latch Enable, Ultra Low Power, Push-Pull
1	SGM8708	2300	Yes	1.8 ~ 5.5	3	5.6	30	Push-Pull & Invert	1.2	40	30	SOT-23-8,SOIC-8	Internal Reference, Latch Enable, Ultra Low Power, Push-Pull and Inverter
1	SGM8710	2300	Yes	1.8 ~ 5.5	3	5.6		Open-Drain (NFET)	1.2	NA	30	SOT-23-8,SOT-23-6	Internal Reference, Latch Enable, Ultra Low Power, NFET Open-Drain
1	SGM8711	2300	No	1.8 ~ 5.5	3	5.6	30	Push-Pull	1.2	40	30	UTDFN-1.6×1.6-6L	Tiny Package, Internal Reference, Ultra Low Power, Push-Pull

# High Speed Comparators

The High Speed Comparator family provides the smallest propagation delay as short as 6ns, while input common mode range of the devices extends beyond both power supply rails. The output pulls to within 0.1V of either supply rail without external pull-up circuitry, making the devices ideal for interface with both CMOS and TTL logics. All input and output pins can tolerate a continuous short-circuit fault condition to either rail. Internal hysteresis ensures a clean output switching, even with slow-moving input signals.



Comparators per Package	Part Number	t <sub>PD</sub> , H to L @V <sub>CC</sub> = 5V (ns)	t <sub>PD</sub> , L to H @V <sub>CC</sub> = 5V (ns)	Rise Time @V <sub>CC</sub> = 5V (ns)	Fall Time @V <sub>CC</sub> = 5V (ns)	V <sub>OS</sub> Max @25°C (mV)	V <sub>CC</sub> (V)	Input Common Mode Voltage Range (V)	I <sub>Q</sub> /Comp Typ (µA)	Logic Output	Rail-to-Rail Output	Package	Features
1	SGM8743	6	6	8	6	5	2.7 ~ 5.5	-0.1 ~ Vs+0.1	1300	Push-Pull	Yes	SOT-23-5,SC70-5	Ultra High Speed, Small Package, Single, Rail-to-Rail Input
1	SGM8744	6	6	8	6	5	2.7 ~ 5.5	-0.1 ~ Vs+0.1	1300	Push-Pull	Yes	SOT-23-5,SC70-5	Ultra High Speed, Small Package, Single, Rail-to-Rail Input
2	SGM8745	6	6	8	6	5	2.7 ~ 5.5	-0.1 ~ Vs+0.1	1300	Push-Pull	Yes	SOIC-8,MSOP-8	Ultra High Speed, Small Package, Dual, Rail-to-Rail Input
1	SGM8740	20	25	8	5	5	2.7 ~ 5.5	-0.1 ~ Vs+0.1	155	Push-Pull	Yes	SOT-23-5,SC70-5	High Speed, Small Package, Single, Rail-to-Rail Input
1	SGM8741	20	25	8	5	5	2.7 ~ 5.5	-0.1 ~ Vs+0.1	155	Push-Pull	Yes	SOT-23-5,SC70-5	High Speed, Small Package, Single, Rail-to-Rail Input
2	SGM8742	20	25	8	5	5	2.7 ~ 5.5	-0.1 ~ Vs+0.1	155	Push-Pull	Yes	SOIC-8,MSOP-8	High Speed, Small Package, Dual, Rail-to-Rail Input
1	SGM8751	30	22	11	8	5	2.7 ~ 5.5	-0.1 ~ Vs-1.2	150	Push-Pull	Yes	SOT-23-5	Low Power, Small Package, Single, Rail-to-Rail Output
1	SGM8746	95	120	8	6	5	2.7 ~ 5.5	-0.1 ~ Vs+0.1	22	Push-Pull	Yes	SOT-23-5,SC70-5	Low Power, Small Package, Single, Rail-to-Rail Input
1	SGM8747	95	120	8	6	5	2.7 ~ 5.5	-0.1 ~ Vs+0.1	22	Push-Pull	Yes	SOT-23-5,SC70-5	Low Power, Small Package, Single, Rail-to-Rail Input
2	SGM8748	95	120	8	6	5	2.7 ~ 5.5	-0.1 ~ Vs+0.1	22	Push-Pull	Yes	SOIC-8,MSOP-8	Low Power, Small Package, Dual, Rail-to-Rail Input
1	SGM8749	97	NA	NA	6	5	2.7 ~ 5.5	-0.1 ~ Vs+0.1	22	Open-Drain	No	SOT-23-5,SC70-5	Low Power, Small Package, Single, Open-Drain Output
2	SGM8750	97	NA	NA	6	5	2.7 ~ 5.5	-0.1 ~ Vs+0.1	22	Open-Drain	No	SOIC-8,MSOP-8	Low Power, Small Package, Dual, Open-Drain Output

## High Voltage Comparators

Comparators per Package	Part Number	t <sub>PD</sub> , H to L @V <sub>CC</sub> = 5V (ns)	t <sub>PD</sub> , L to H @V <sub>CC</sub> = 5V (ns)	Rise Time @V <sub>CC</sub> = 5V (ns)	Fall Time @V <sub>CC</sub> = 5V (ns)	V <sub>OS</sub> Max @25°C (mV)	V <sub>CC</sub> (V)	Input Common Mode Voltage Range (V)	I <sub>O</sub> /Comp Typ (μA)	Logic Output	Rail-to-Rail Output	Package	Features
2	SGM8770	45			15	2.4	2.8 ~ 36	-V <sub>S</sub> ~ V <sub>S</sub> -1.5	155	Open-Drain	Yes	SOIC-8,TDFN-3×3-8L	High Voltage, High Precision, Open-Drain, Dual
2	SGM8773	60	60	20	20	2.4	2.8 ~ 36	-V <sub>S</sub> ~ V <sub>S</sub> -1.5	155	Push-Pull	Yes	SOIC-8,TDFN-3×3-8L	High Voltage, High Precision, Push-Pull, Dual

## Digital-to-Analog Converters

This SGM534X family DAC is designed for general purpose multi-channel high precision voltage output application, for example system bias generation, gain and offset control, positioning and control, etc.

Part Number	Resolution (Bits)	Update Rate (SPS)	Output Voltage		Reference	V <sub>DD</sub> (V)	INL (LSB)	DNL (LSB)	Offset Error (mV)	Gain Error (% of FSR)	Gain Drift (ppm/°C)	Output Settling	Operating	Power-Down	Temp Range (°C)	Package	Features
			Time (μs)	I <sub>Q</sub> (μA)								I <sub>Q</sub> (μA)					
SGM5347-8	8	90K	8	0 ~ V <sub>DD</sub>	External	2.7 ~ 5.5	0.2	0.02	3	0.1	2	5	600	0.6	-40 to 125	SOIC-16,TSSOP-16	8 Channels, 8-Bit Digital-to-Analog Converter with Output Operational Amplifier
SGM5347-10	10	83K	8	0 ~ V <sub>DD</sub>	External	2.7 ~ 5.5	0.8	0.08	3	0.1	2	5	600	0.6	-40 to 125	SOIC-16,TSSOP-16	8 Channels, 10-Bit Digital-to-Analog Converter with Output Operational Amplifier
SGM5347-12	12	77K	8	0 ~ V <sub>DD</sub>	External	2.7 ~ 5.5	3	0.3	3	0.1	2	7	600	0.6	-40 to 125	SOIC-16,TSSOP-16	8 Channels, 12-Bit Digital-to-Analog Converter with Output Operational Amplifier
SGM5348-8	8	200K	8	0 ~ V <sub>DD</sub>	External	2.7 ~ 5.5	0.2	0.02	3	0.1	2	5	600	0.6	-40 to 125	TSSOP-16,TQFN-3x3-16L	8 Channels, 8-Bit Digital-to-Analog Converter with Output Operational Amplifier
SGM5348-10	10	200K	8	0 ~ V <sub>DD</sub>	External	2.7 ~ 5.5	0.8	0.08	3	0.1	2	5	600	0.6	-40 to 125	TSSOP-16,TQFN-3x3-16L	8 Channels, 10-Bit Digital-to-Analog Converter with Output Operational Amplifier
SGM5348-12	12	140K	8	0 ~ V <sub>DD</sub>	External	2.7 ~ 5.5	3	0.3	3	0.1	2	7	600	0.6	-40 to 125	TSSOP-16,TQFN-3x3-16L	8 Channels, 12-Bit Digital-to-Analog Converter with Output Operational Amplifier

## Oversampling Analog-to-Digital Converters

This SGM58XXX family sigma\_delta ADC is designed for high precision and low power consumption application, for example industrial temperature and pressure sensor conditioning, battery powered instruments and industrial field transducer.

Part Number	Resolution (Bits)	Data Rate (SPS)	Input Voltage		Reference	V <sub>DD</sub> (V)	INL (ppmFS)	Offset Error (μV)	Gain Error (% of FSR)	Gain Drift (ppm/°C)	Programmable Gain	Operating	Power-Down	Temp Range (°C)	Package	Features	
			ENOB (Bit)	I <sub>Q</sub> (μA)								I <sub>Q</sub> (μA)					
SGM58031	16	6.25 ~ 960	4	0 ~ V <sub>DD</sub>	Internal/External	3 ~ 5.5	16	16	0.1	80	2/3 ~ 16	16	230	0.8	-40 to 125	MSOP-10,TDFN3x3-10L	Ultra-Small, Low-Power, 16-Bit, Analog-to-Digital Converter with Internal Reference
SGM58200	24	6.25 ~ 960	4	0 ~ V <sub>DD</sub>	Internal/External	3 ~ 5.5	16	10	0.1	80	2/3 ~ 16	20.8	230	0.8	-40 to 125	MSOP-10,TDFN3x3-10L	Ultra-Small, Low-Power, 24-Bit, Analog-to-Digital Converter with Internal Reference

# High Performance Video Buffers

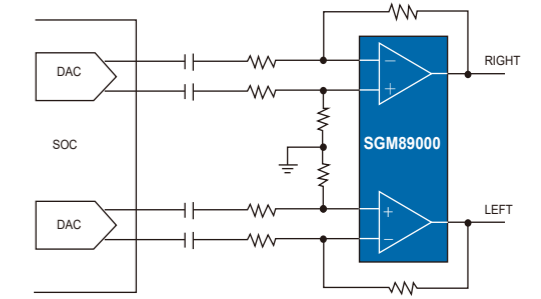
The High Performance, High Reliability Video Buffer family provides industry's broadest products of driving Standard Definition and High Definition analog video signals, including 1080p. These comprehensive filtering solutions provide the designers flexibility to easily filter and drive various video signals, including high definition video, DVD and set-top box applications.

Part Number	Standard High			Shut-down	V <sub>CC</sub> (V)	Gain (dB)	-3dB Bandwidth		Rail-to-Rail Output	Internal Filter	Quiescent Current (mA)	Slew Rate Typ (V/μs)	Group Delay (ns)	Package	Features
	Definition Channels	Definition Channels	1080p Support				Typ (MHz)	Typ (MHz)							
SGM9111	1			No	3.0 ~ 5.5	6	8	6	Yes	Yes	6	35	28	SOIC-8,SC70-5	Single Channel, Standard Definition, Small Package
SGM9113	1			No	3.0 ~ 5.5	6	8	6	Yes	Yes	6	35	28	SOIC-8,SC70-5	Single Channel, Standard Definition, Small Package
SGM9114	1			Yes	3.0 ~ 5.5	6	8	6	Yes	Yes	6	35	28	SOT-23-6	Single Channel, Standard Definition, Small Package with Shutdown
SGM9115	3			No	3.3 ~ 5.5	6	9	5.5	Yes	Yes	21	44	31	SOIC-8	Triple Channels, Standard Definition
SGM9116		3		No	3.3 ~ 5.5	6	38.5	30.5	Yes	Yes	30	165	3	SOIC-8	Triple Channels, High Definition, 1080i Supported
SGM9117		3	Yes	No	2.5 ~ 5.5	6	200	92	Yes	No	27.5	300	3	SOIC-8	Triple Channels, High Definition, 1080p Supported
SGM9119	3			No	3.3 ~ 5.5	6	8	5.56	Yes	Yes	21	31.5	31.2	SOIC-8,MSOP-8	Triple Channels, Standard Definition
SGM9121	1			Yes	3.0 ~ 5.5	6	8	6	Yes	Yes	6	35	28	SC70-6	Single Channel, Standard Definition, Small Package with Shutdown
SGM9122	2			No	3.0 ~ 5.5	6	15	8.9	Yes	Yes	5.8			WSOP-8,TSSOP-8	Dual Channels, Standard Definition
SGM9124	4			No	3.3 ~ 5.5	6	8	5.9	Yes	Yes	30	35	28	MSOP-10	Quad Channels, Standard Definition
SGM9125	5			No	3.3 ~ 5.5	6	8	5.8	Yes	Yes	44	35	30.4	TSSOP-14	Five Channels, Standard Definition
SGM9126	6			No	3.3 ~ 5.5	6	8	5.7	Yes	Yes	44	35	30.5	TSSOP-14	Six Channels, Standard Definition
SGM9127	4			No	3.3 ~ 5.5	6	8	5.9	Yes	Yes	30	35	28	TSSOP-14	Quad Channels, Standard Definition
SGM9128YP	1	3		No	3.1 ~ 5.5	6	8.5/46	6.4/32	Yes	Yes	65	34/190	30/2.5	MSOP-10 (Exposed Pad)	Single SD Channel, Triple HD Channels, 1080i Supported, Exposed Pad
SGM9131		3		No	3.1 ~ 5.5	6	46	32	Yes	Yes	55	190	3.5	SOIC-8	Triple Channels, High Definition, 1080i Supported
SGM9132		3	Yes	No	3.1 ~ 5.5	6	98	78	Yes	Yes	75	340	5.3	SOIC-8 (Exposed Pad)	Triple Channels, High Definition, 1080p Supported
SGM9133	1	3	Yes	Yes	3.1 ~ 5.5	6	8.5/46/98	6.4/32/78	Yes	Yes	75	34/190/340	35/3.5/7	TSSOP-14	Single SD Channel, Triple HD Channels, 1080i/1080p Supported with Shutdown
SGM9134	1	3		No	3.1 ~ 5.5	6	8.5/46	6.4/32	Yes	Yes	58	34/190	35/3.5	TSSOP-14	Single SD Channel, Triple HD Channels, 1080i Supported
SGM9135	1	3	Yes	No	3.1 ~ 5.5	6	8.5/98	6.4/78	Yes	Yes	88	34/340	35/5.3	MSOP-10 (Exposed Pad)	Single SD Channel, Triple HD Channels, 1080p Supported
SGM9136	1	3	Yes	Yes	3.1 ~ 5.5	6	8.5/46/98	6.4/33/78	Yes	Yes	75	34/190/340	35/3.5/5.3	TSSOP-14	Single SD Channel, Triple HD Channels, 1080i/1080p Supported with Shutdown
SGM9137	1	3		No	3.1 ~ 5.5	6	8.5/46	6.4/32	Yes	Yes	58	34/190	35/3.5	TSSOP-14	Single SD Channel, Triple HD Channels, 1080i Supported
SGM9140	1			Yes	2.8 ~ 5.5	12/6	26/23	18/16	Yes	No	9			MSOP-8	Quad Channels, Standard Definition
SGM9141	1			No	4.5 ~ 13.2	6	25	17	Yes	No	9			SOIC-8,TSSOP-8	Triple Channels, Standard Definition
SGM9144	1			Yes	2.5 ~ 4.0	6/12	14/14		Yes	Yes	11.8	60		MSOP-8,TDFN-2x2-8L	Single SD Channel, Capless Output Coupling
SGM9146	1	3	Yes	No	3.1 ~ 5.5	6	8.5/46/98	6.4/32/78	Yes	Yes	9.5/58/78	34/190/340	35/3.5/5.3	TSSOP-14	Single SD Channel, Triple HD Channels, 1080i/1080p Supported
SGM9147	1			No	3.0 ~ 5.5	6	13	10	Yes	Yes	5	60	6	SC70-5	Single Channel, Standard Definition, Small Package
SGM9148	1			Yes	3.0 ~ 5.5	6	13	10	Yes	Yes	5	60	6	SOT-23-6	Single Channel, Standard Definition, Small Package with Shutdown
SGM9149	3			No	3.0 ~ 5.5	6	13	10.7	Yes	Yes	21	61	5.2	SOIC-8,MSOP-8	Triple Channels, Standard Definition
SGM9150	1	3	Yes	Yes	3.1 ~ 5.5	6	8.5/98	6.4/78	Yes	Yes	9.5/65	34/340	35/5.3	TSSOP-14	Single SD Channel, Triple HD Channels, 1080p Supported with Shutdown
SGM9152		1	Yes	Yes	3.1 ~ 5.5	6	79	64	Yes	Yes	15	300	3.5	MSOP-8	Single HD Channel, 1080p Supported
SGM9153		1	Yes	Yes	2.5 ~ 4.0	6	82	62	Yes	Yes	36	305	6.2	MSOP-10,TDFN-3x3-10L	Single HD Channel, 1080p Supported, Capless Output Coupling
SGM9154		1	Yes	Yes	3.1 ~ 5.5	6	79	64	Yes	Yes	15	300	3.5	TSSOP-8,SOT-23-6,SC70-5	Single HD Channel, 1080p Supported
SGM9155		1		Yes	3.1 ~ 5.5	6	40		Yes	Yes	12.5	175	3.8	SOT-23-6,SC70-5	Single HD Channel, 720p Supported
SGM9203	3	3	Yes	Yes	3.3 ~ 5.5	6/0	8/18/38/75	5.4/12/30/40	Yes	Yes	40	40/78/155/311	22/13.5/9.5/NA	TSSOP-14	Triple Channels, Selectable SD/PS/HD(1080i)/HD(1080p) with Shutdown
SGM9346	3	3		No	3.3 ~ 5.5	6	8/35	5.36/28.2	Yes	Yes	64.5	39.5/140	10.5/4.9	TSSOP-20	Triple SD Channels, Triple HD Channels



# High Performance Audio Line Drivers

The Audio Line Driver family provides click-pop free stereo line drivers designed to allow the removal of the output DC-blocking capacitors for reduced component count and cost. The products are ideal for single supply electronics where size and cost are critical design parameters. The use of external gain resistors also allows the implementation of a 2nd order low pass filter to complement DAC's and SoC converters.



Part Number	Output Voltage		Stereo or Mono	$V_{CC}$ (V)	Differential Input	Shutdown Logic	Shutdown Current Typ ( $\mu A$ )	Click-Pop Suppression	Package	Features
	$R_L = 600\Omega$ THD = 1%, $V_{CC} = 5.0V$	$R_L = 32\Omega$ THD $\leq 0.1\%$ , $V_{CC} = 5.0V$								
SGM4916		88mW/CH	Stereo	2.7 ~ 5.5	No	Active Low	0.01	Yes	TQFN-3x3-12L	OCL Headphone Driver
SGM4917		80mW/CH	Stereo	2.7 ~ 5.5	Yes	Active Low	0.01	Yes	TQFN-3x3-16L	OCL Headphone Driver with Differential Input
SGM4918		80mW/CH	Stereo	2.7 ~ 5.1	No	Active Low	0.01	Yes	TDFN-3x3-10L	OCL Headphone Driver
SGM89000	2.05Vrms @ $V_{CC} = 3.3V$		Stereo	3.0 ~ 3.6	Yes	Active Low	130	Yes	TSSOP-14	600 $\Omega$ Audio Line Driver with UVP Function
SGM8903	3.05Vrms		Stereo	3.0 ~ 5.5	Yes	Active Low	130	Yes	TSSOP-14	600 $\Omega$ Audio Line Driver with UVP Function
SGM8904	3.05Vrms		Stereo	3.0 ~ 5.5	No	Active Low	130	Yes	MSOP-10	600 $\Omega$ Audio Line Driver with UVP Function
SGM8905	3.05Vrms		Stereo	3.0 ~ 5.5	No	Active Low	130	Yes	MSOP-10 (Exposed Pad)	600 $\Omega$ Audio Line Driver with UVP Function
SGM8910		55mW/CH	Stereo	2.8 ~ 12	Yes	Active High	470	Yes	TSSOP-20, TQFN-4x4-20L	Audio Line Driver and Headphone Driver with Click-Pop Noise Cancellation

# Analog Switches

The Analog Switch family provides industry's broadest analog switches covering the requirements of low on-resistance (as low as 75mΩ), high speed (up to 600MHz), multi-channel selection and high voltage operation (up to 40V).

Channels per Package	Part Number	Type of Switch	V <sub>CC</sub> (V)	Quiescent Current (μA)	R <sub>ON</sub> (Ω)	Charge Injection (pC)	Bandwidth @-3dB (MHz)	Digital I/O V <sub>INH</sub> Min (V)	Digital I/O V <sub>INL</sub> Max (V)	t <sub>ON</sub> (ns)	t <sub>OFF</sub> (ns)	Package	Features
1	SGM3003	1:2	1.8 ~ 5.5	<1	0.5	5	30	2.4	0.8	21	9	MSOP-8	Small Package, 30MHz, Ultra Low R <sub>ON</sub> , Single SPDT
1	SGM4157YC	1:2	1.8 ~ 5.5	0.1	0.8		90	1.6	0.4	56	32	SC70-6	Low R <sub>ON</sub> , Small Package, Single SPDT
1	SGM3798	1:2	2.6 ~ 5.0	2	0.075		100	1.4	0.4	205	210	WLCSP-1.2×1.2-9B,TDFN-3×3-8L	Audio Headset Analog Switch with Reduced GND Switch R <sub>ON</sub> and FM Capability
1	SGM3001	1:2	1.8 ~ 5.5	<1	2.5	3	120	2.4	0.8	11	30	SC70-6	Small Package, 120MHz, Low R <sub>ON</sub> , Single SPDT
1	SGM3157	1:2	1.8 ~ 5.5	<5	4.5		300	1.5	0.6	20	15	SC70-6	300MHz, Small Package, Single SPDT
1	SGM3719	1:2	2.5 ~ 5.0	<8	4	16	400	1.65	0.6	15	11	SOT-23-6	400MHz, Negative Signal Passing, Single SPDT
1	SGM3167	1:2	1.8 ~ 5.5	<5	9		600	1.5	0.6	20	15	SC70-6	600MHz, Small Package, Single SPDT
2	SGM4684	1:2	1.8 ~ 5.5	<1	0.4	3	13	2.4	0.8	25	28	WLCSP-2.0×1.5-10B	Ultra Low R <sub>ON</sub> , Tiny Package, Dual SPDT
2	SGM3005	1:2	1.8 ~ 5.5	<1	0.5	20	15	2.4	0.8	50	15	TDFN-3×3-10L,MSOP-10	Tiny Package, 15MHz, Ultra Low R <sub>ON</sub> , Dual SPDT
2	SGM2267	1:2	1.8 ~ 4.2	<1	0.4	4	40	1.6	0.5	96	16	TQFN-2.1×1.6-10L	Ultra Low R <sub>ON</sub> , Tiny Package, Dual SPDT
2	SGM2268	1:2	1.8 ~ 4.2	<1	0.4	4	40	1.6	0.5	88	16	TQFN-1.8×1.4-10L	Ultra Low R <sub>ON</sub> , Tiny Package, Dual SPDT
2	SGM5223	1:2	1.8 ~ 4.2	<1	0.5	13	55	1.6	0.5	17	27.5	TQFN-1.8×1.4-10L	Ultra Low R <sub>ON</sub> , Dual, SPDT
2	SGM3718	1:2	2.5 ~ 5.0	<3.5	0.6	85	80	1.5	0.6	17	24	UTQFN-1.8×1.4-10L	80MHz, Negative Signal Passing, Tiny Package, Dual SPDT
2	SGM3712	1:2	2.7 ~ 12	600	0.9	500	100	1.5	0.5	400	100	WLCSP-1.27×2.13-15B,SOIC-14	0.9Ω, High Voltage, Rail-to-Rail Negative Signal Passing
2	SGM3715	1:2	2.7 ~ 12	520	0.8	1000	100	1.5	0.5	880	190	WLCSP-1.27×2.13-15B	0.8Ω, High Voltage, Rail-to-Rail Negative Signal Passing, Click-Pop Noise Suppressor
2	SGM4517	1:2	2.7 ~ 24	350	0.9	500	100	1.5	0.5	400	100	WLCSP-1.27×2.13-15B,SOIC-14	24V, High THD, High Off-Isolation, Very Low Crosstalk, Rail-to-Rail Negative Signal Passing
2	SGM3002	1:2	1.8 ~ 5.5	<1	2.5	3	120	2.4	0.8	11	8	MSOP-10	Small Package, 120MHz, Low R <sub>ON</sub> , Dual SPDT
2	SGM3158	1:2	1.8 ~ 5.5	<5	4.5		270	1.5	0.6	20	15	TDFN-3×1-12L	270MHz, Tiny Package, Dual SPDT
2	SGM2258	1:2	1.8 ~ 5.5	<1	4.5	6	300	1.6	0.5	70	20	TQFN-2.1×1.6-10L	USB2.0 Full Speed Analog Switch
2	SGM2260	1:2	1.8 ~ 4.3	<1	6	10	300	1.6	0.5	20	20	UTQFN-1.8×1.4-10L	6Ω, 300MHz, Low-Power Full-Speed USB (12Mbps) Switch
2	SGM3711	1:2	2.7 ~ 12	300	11	80	300	1.4	0.4	200	60	SOIC-16,TQFN-2.6×1.8-16L	12V, High THD, High Off-Isolation, Very Low Crosstalk, Rail-to-Rail Negative Signal Passing
2	SGM4516	1:2	2.7 ~ 24	70	11	80	300	1.4	0.4	200	60	SOIC-16,TQFN-2.6×1.8-16L	24V, High THD, High Off-Isolation, Very Low Crosstalk, Rail-to-Rail Negative Signal Passing
2	SGM4717	1:2	1.8 ~ 5.5	<5	4.5		300	1.5	0.6	26	20	WLCSP-2.0×1.5-10B,MSOP-10,TDFN-3×3-10L,TQFN-1.8×1.4-10L	300MHz, WLCSP, Tiny Package, Dual SPDT
2	SGM3717	1:2	2.5 ~ 5.0	<6	4	16	400	1.5	0.6	15	11	UTQFN-1.8×1.4-10L,MSOP-10	400MHz, Negative Signal Passing, Tiny Package, Dual SPDT
2	SGM7223	1:2	1.8 ~ 4.3	<1	4.5	9.8	500	1.6	0.5	11	20	TQFN-2.1×1.6-10L	USB2.0 High Speed, Dual SPDT
2	SGM7222	1:2	1.8 ~ 4.3	<1	4.5	11	550	1.6	0.5	10	22	TQFN-1.8×1.4-10L,MSOP-10,UTQFN-1.8×1.4-10L	USB2.0 High Speed, Dual SPDT
2	SGM7226	1:2	1.8 ~ 5.5	<30	5	10	550	1.5	0.35	15	20	TQFN-2.6×1.8-16L	5.5V, USB2.0 High Speed, Dual SPDT
2	SGM7227	1:2	1.8 ~ 4.3	<1	5	10	550	1.6	0.5	15	20	MSOP-10,UTQFN-1.8×1.4-10L	550MHz, USB2.0 Certified, Tiny Package, Dual SPDT
2	SGM7228	1:2	1.8 ~ 4.3	<1	6	11	550	1.6	0.5	10	22	TQFN-1.8×1.4-10L	Low Cost, High Speed USB 2.0 (480Mbps) DPDT Analog Switch
2	SGM7229	1:2	1.8 ~ 5.5	0.1	5.5	2	850	1.5	0.4	40	15	UTQFN-1.8×1.4-10L,MSOP-10	High-Speed USB 2.0 (480Mbps) DPDT Analog Switch
2	SGM3710	1:2	2.7 ~ 12	300	1/11	600	160/130	1.4	0.4	200	100	TQFN-2.6×1.8-16L,SOIC-16	1Ω/11Ω, High Voltage, Rail-to-Rail Negative Signal Passing
2	SGM4515	1:2	2.7 ~ 24	70	1/11	600	160/130	1.4	0.4	200	60	SOIC-16,TQFN-2.6×1.8-16L	24V, High THD, High Off-Isolation, Very Low Crosstalk, Rail-to-Rail Negative Signal Passing
3	SGM4583	1:2	3.6 ~ 11	<20	36	10	140	2.4	0.8	60	70	SSOP-16,TSSOP-16,SOIC-16,TQFN-3×3-16L	High Voltage, Triple 1:2 Mux
3	SGM48753	1:2	2.5 ~ 5.5	<6	48	3	180	1.7	0.5	60	70	SSOP-16,TSSOP-16,SOIC-16,TQFN-3×3-16L	Low R <sub>ON</sub> , Low Charge Injection, Triple 1:2 Mux

# Analog Switches

Channels per Package	Part Number	Type of Switch	V <sub>CC</sub> (V)	Quiescent Current (μA)	R <sub>ON</sub> (Ω)	Charge Injection (pC)	Bandwidth @-3dB (MHz)	Digital I/O V <sub>INH</sub> Min (V)	Digital I/O V <sub>INL</sub> Max (V)	t <sub>ON</sub> (ns)	t <sub>OFF</sub> (ns)	Package	Features
4	SGM3699	1:2	1.8 ~ 4.35	<1	0.5	30	70	1.6	0.5	52	25	TQFN-3×3-16L	70MHz, Low Voltage, Low I <sub>Q</sub> , Ultra Low R <sub>ON</sub> , Quad SPDT
4	SGM3799	1:2	1.8 ~ 4.35	<1	0.5	30	70	1.6	0.5	52	25	TQFN-2.6×1.8-16L	70MHz, Low Voltage, Low I <sub>Q</sub> , Ultra Low R <sub>ON</sub> , Quad SPDT
4	SGM44599	1:2	1.8 ~ 5.5	<1	4	3.5	300	1.6	0.5	31.5	30	TQFN-3×3-16L,TQFN-2.5×2.5-16L	300MHz, Small Package, Quad SPDT
4	SGM44600	1:2	1.8 ~ 5.5	<1	4	4.8	300	1.6	0.5	29.5	29.5	TQFN-3×3-16L	300MHz, Small Package, Quad SPDT
4	SGM44601	1:2	1.8 ~ 5.5	<1	4	3.5	300	1.6	0.5	36	30	TQFN-2.6×1.8-16L	300MHz, Tiny Package, Quad SPDT
4	SGM44602	1:2	1.8 ~ 5.5	<1	4	4.8	300	1.6	0.5	32	26	TQFN-2.6×1.8-16L	300MHz, Tiny Package, Quad SPDT
4	SGM44603	1:2	1.8 ~ 5.5	<1	4.5	20	300	1.6	0.5	40	30	TQFN-2.6×1.8-16L	300MHz, Tiny Package, Quad SPDT
4	SGM5018	1:2	1.8 ~ 5.5	<1	4.5	20	300	1.6	0.5	40	30	TSSOP-16	300MHz, Quad SPDT
4	SGM3700	1:2	2.5 ~ 5.5	<15	4	21	380	1.5	0.5	15	9	TQFN-3×3-16L	380MHz, Negative Signal Passing, Quad SPDT, Tiny Package
4	SGM330A	1:2	2.7 ~ 5.5	<20	12		500	2	0.6	25	13	SOIC-16,TSSOP-16,SSOP-16	Quad, SPDT Video Analog Switch
4	SGM331A	1:2	5	<20	12		500	2	0.6	25	13	SOIC-16,TSSOP-16,SSOP-16	Quad, SPDT Video Analog Switch with 1.2V Self Bias
1	SGM48780	1:4	1.8 ~ 4.2	<1	4	10	150	1.4	0.3	35	9	TDFN-3×3-10L,MSOP-10	Single SPQT
1	SGM48755	1:4	2.5 ~ 5.5	<6	24	3	180	1.7	0.5	50	85	MSOP-10	Low R <sub>ON</sub> , Low Charge Injection, Single 1:4 Mux
2	SGM4782	1:4	1.8 ~ 4.2	<1	0.5	-18	30	1.6	0.5	20	20	TQFN-3×3-16L,TSSOP-16	Ultra Low R <sub>ON</sub> , Dual, SPQT
2	SGM4582	1:4	3.6 ~ 11	<20	36	15	120	2.4	0.8	60	60	SSOP-16,TSSOP-16,SOIC-16,TQFN-3×3-16L	High Voltage, Dual 1:4 Mux
2	SGM84782	1:4	1.8 ~ 4.2	<1	4	-18	150	1.6	0.5	17	9	TQFN-3×3-16L,TSSOP-16	Dual SPQT
2	SGM48752	1:4	2.5 ~ 5.5	<6	48	3	180	1.7	0.5	60	70	SSOP-16,TSSOP-16,SOIC-16,TQFN-3×3-16L	Low R <sub>ON</sub> , Low Charge Injection, Dual 1:4 Mux
2	SGM4589	1:4	4.5 ~ 40		23	18	300	1.6	0.5	50	180	TSSOP-16,SOIC-16	40V, 300MHz, Dual 1:4 Mux in One Package, GPIO Control
1	SGM4581	1:8	3.6 ~ 11	<20	36	15	90	2.4	0.8	60	60	SSOP-16,TSSOP-16,SOIC-16,TQFN-3×3-16L	High Voltage, Single 1:8 Mux
1	SGM4588	1:8	4.5 ~ 40		23	18	160	1.6	0.5	50	180	TSSOP-16,SOIC-16	40V, 160MHz, Single 1:8 Mux in One Package, GPIO Control
1	SGM48751	1:8	2.5 ~ 5.5	<6	48	6	180	1.7	0.5	60	70	SSOP-16,TSSOP-16,SOIC-16,TQFN-3×3-16L	Low R <sub>ON</sub> , Low Charge Injection, Single 1:8 Mux
4	SGM48754	SPST	2.5 ~ 5.5	<6	24	7	180	1.7	0.5	40	100	TSSOP-14,SOIC-14	Low R <sub>ON</sub> , Low Charge Injection, Quad SPST
4	SGM4511	SPST	4.5 ~ 40		23	18	300	1.6	0.5	40	120	TSSOP-16,SOIC-16	40V, 300MHz, Quad SPST, Fast Turn-On Time
4	SGM4512	SPST	4.5 ~ 40		23	18	300	1.6	0.5	40	120	TSSOP-16,SOIC-16	40V, 300MHz, Quad SPST, Fast Turn-On Time

## Switch Complexes

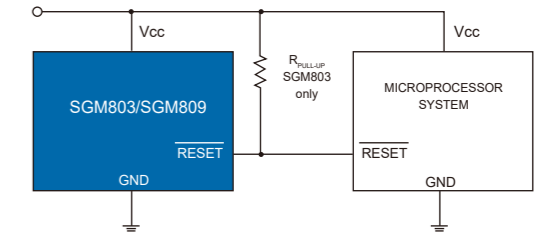
Part Number	Type	V <sub>CC</sub> (V)	Bandwidth @-3dB (MHz)	Control Interface	R <sub>ON</sub> (Ω)	R <sub>ON</sub> Flatness (Ω)	C <sub>ON</sub> (pF)	C <sub>OFF</sub> C <sub>S</sub> /C <sub>D</sub> (pF)	Crosstalk Typ (dB)	Charge Injection Typ (pC)	Package	Features
SGM6516	16×8	4.5 ~ 13.2	45	I/O	40		65	25	-47		LQFP-10×10-44L	16×8, Passive
SGM6512	1:16	3.3 ~ 13.2	80	I/O	24	12	75	8/70	-70	25	TQFN-5×5-32L, TSSOP-28	1:16, Multiplexer
SGM6515	1:8	3.3 ~ 13.2	80	I/O	24	12	75	8/70	-70	25	TSSOP-16	1:8, Multiplexer
SGM6501	12×9	3.1 ~ 5.5	84	I <sup>2</sup> C					-74		SSOP-28, TSSOP-28	12×9, Buffered
SGM6502	8×6	3.1 ~ 5.5	88	I <sup>2</sup> C					-77		TSSOP-24	8×6, Buffered
SGM65232	(1:2)×32	3.3 ~ 5	100	I/O	11		26	13	-60		LQFP-14×14-100L	High Speed, 2:1 32-Bit Bus Multiplexer
SGM6510	16×4	2.7 ~ 5.5	120	I <sup>2</sup> C	30	8	40		-110	7	TSSOP-28, TQFN-4×4-28L	16×4, Passive
SGM6511	16×8	2.7 ~ 5.5	120	I <sup>2</sup> C	30	8	50		-110	7	TQFN-5×5-32L, LQFP-7×7-32L	16×8, Passive
SGM6513	(1:8)×2	3.3 ~ 13.2	135	I/O	24	12	50	8/36	-70	25	TQFN-5×5-32L, TSSOP-28	Dual 1:8, Multiplexer
SGM6514	16×8	2.7 ~ 5.5	250	I <sup>2</sup> C	30	8	50		-110	7	LQFP-7×7-32L	High Speed, 16×8, Passive, I <sup>2</sup> C Interface
SGM6518	16×8	2.7 ~ 5.5	250	SPI	28	7	50	25	-55	6	LQFP-7×7-32L	High Speed, 16×8, Passive, Serial Digital Interface
SGM6533	(1:3)×3	2.5 ~ 5.5	350	I/O	7				-60		TQFN-3×3-20L, TSSOP-20	High Speed, 3-1:3 Multiplexer
SGM6503		1.8 ~ 5.5	400	I/O		3.5/0.45	12/185		-80	3/80	TQFN-3×3-20L	SIM I/F Swap
SGM6504	(2:2)×4	1.8 ~ 5.5	400	I/O	12	3.5	12		-80	2.5	TQFN-3×3-20L	4-2:2, Passive Swap
SGM6505	(1:2)×6	2 ~ 5	450	I/O	8.5	4.5	15	4/9	-55	1.2	TSSOP-24, TQFN-4×4-24L	Six Channels 1:2 Multiplexer
SGM7232	(1:3)×2	2.7 ~ 4.3	380/400	I/O	4/9		18	7	-90		UTQFN-2.2×1.4-12L	High Speed, 2-1:3 Multiplexer
SGM7220	Type C	2.7 ~ 5		I <sup>2</sup> C, I/O							UTQFN-1.6×1.6-12L	USB Type-C Configuration, Channel Logic and Port Control

# Level Translators

Translators per Package	Part Number	Data Rate (Mbps)	V <sub>CC</sub> (V)	V <sub>L</sub> Range (V)	V <sub>CCA</sub> Range (V)	V <sub>CCB</sub> Range (V)	Bidirectional	V <sub>CC</sub> Shutdown I/O State	Shutdown I <sub>CC</sub> Max (μA)	Logic Output	Package	Features
1	SGM4552	24/2			1.65 ~ 5.5	2.3 ~ 5.5	Yes	Hi-Z	5.5	Open-Drain/Push-Pull	UTDFN-1.45×1-6L, SOT-23-6, SC70-6	GPIO Level Shifter
1	SGM4554	100			1.2 ~ 5.0	1.65 ~ 5.5	Yes	Hi-Z	10	Push-Pull	SC70-6, UTDFN-1.45×1-6L	GPIO Level Shifter
1	SGM4555		2.7 ~ 5.5	1.4 ~ 5.5			Yes	Low			TQFN-2×2-12L, TQFN-3×3-16L	Card Interface
1	SGM4560		3.3 ~ 5.5	1.6 ~ 5.5			Yes	Low	8		TSSOP-14	CA Card Interface
1	SGM4561		5.0 ~ 5.5	1.6 ~ 5.5			Yes	Low			MSOP-10	HDMI Interface
1	SGM4535		2.7 ~ 5.5	1.6 ~ 5.5			Yes	Low			TQFN-5×5-32L	Smart Card Interface
2	SGM4551				1.2 ~ 3.3	1.8 ~ 5.5	Yes	Hi-Z	8	Open-Drain	SOT-23-8, XTDFN-1.4×1-8L	C Level Shifter
2	SGM4553	24/2			1.65 ~ 5.5	2.3 ~ 5.5	Yes	Hi-Z	5.5	Open-Drain/Push-Pull	SOT-23-8, XTDFN-1.4×1-8L	GPIO Level Shifter
2	SGM4556	100			1.2 ~ 5.0	1.65 ~ 5.5	Yes	Hi-Z	10	Push-Pull	SOT-23-8, XTDFN-1.4×1-8L	GPIO Level Shifter
2	SGM4558		2.7 ~ 5.5	1.4 ~ 5.5			Yes	Low	2		TQFN-3×3-20L	SIM/Smart Card Interface
4	SGM4563	100			1.2 ~ 5.5	1.65 ~ 5.5	No	Hi-Z	5	Push-Pull	SOIC-14, UTQFN-1.8×1.8-12L	SPI Bus or UART Interface
4	SGM4564	100			1.2 ~ 5.5	1.65 ~ 5.5	Yes	Hi-Z	12/9	Push-Pull	SOIC-14, UTQFN-1.8×1.8-12L, TQFN-2×2-12L	GPIO Level Shifter
4	SGM4574	24/2			1.65 ~ 5.5	2.3 ~ 5.5	Yes	Hi-Z		Open-Drain/Push-Pull	SOIC-14, UTQFN-1.8×1.8-12L, TQFN-2×2-12L	GPIO Level Shifter
4	SGM4T245				1.2 ~ 5.0	1.2 ~ 5.0	Yes	Hi-Z		Push-Pull	TSSOP-16, TQFN-2.6×1.8-16L	4-Bit Non-Inverting Bus Transceiver
6	SGM4566	100			1.2 ~ 5.5	1.65 ~ 5.5	Yes	Hi-Z	12/9	Push-Pull	TSSOP-16, TQFN-2.6×1.8-16L	GPIO Level Shifter
6	SGM4576	24/2			1.65 ~ 5.5	2.3 ~ 5.5	Yes	Hi-Z		Open-Drain/Push-Pull	TQFN-2.6×1.8-16L	GPIO Level Shifter
8	SGM4568	100			1.2 ~ 5.5	1.65 ~ 5.5	Yes	Hi-Z	12/9	Push-Pull	TSSOP-20, TQFN-3×3-20L	GPIO Level Shifter
8	SGM4578	24/2			1.65 ~ 5.5	2.3 ~ 5.5	Yes	Hi-Z		Open-Drain/Push-Pull	TSSOP-20, TQFN-3×3-20L	GPIO Level Shifter
8	SGM7SZ245		1.8 ~ 5.0				Yes	Hi-Z		Push-Pull	TSSOP-20, TQFN-5.5×3.5-24L, TQFN-3×3-20L	Octal Bus Transceivers with 3-State Outputs
8	SGM8T245				1.2 ~ 5.0	1.2 ~ 5.0	Yes	Hi-Z		Push-Pull	TSSOP-24, TQFN-5.5×3.5-24L	8-Bit Non-Inverting Bus Transceiver

# Supervisory Circuits

The Supervisory Circuits family provides industry standard supervisory IC with high reliability and consistency, featuring low power supply, manual reset, up to 8 reset thresholds suitable for monitoring 1.8V, 2.5V, 3V, 3.3V and 5V supply voltages, adjustable reset time setup with output capacitance and watchdog.



Part Number	Supply Current (µA)	Manual Reset	V <sub>CC</sub> (V)	Reset Threshold (V)	Watchdog Timer	V <sub>CC</sub> to Reset Delay (µs)	Reset Active Timeout Period (ms)	Reset Output	Package	Features
SGM706B	0.6	Yes	1.0 ~ 5.5	4.63,4.38,4.0,3.08,2.93,2.63	1.6s		200	Active Low/Push-Pull	SOIC-8,MSOP-8	6 Selectable Thresholds, Watchdog, Debounced Manual-Reset Input
SGM708	20	Yes	1.0 ~ 5.5	4.65,4.4,4.0,3.08,2.93,2.63	No		200	Active Low/High/Push-Pull	SOIC-8	6 Selectable Thresholds, Debounced Manual-Reset Input, Dual Reset Outputs
SGM800	3	No	1.0 ~ 5.5	2.93,2.63,2.32,1.63	No	80	Programmable	Active Low/Open-Drain	SOT-23-5	Programmable Reset Timeout, Low Quiescent Current
SGM802	3	No	1.0 ~ 5.5	2.93,2.63,2.32,1.63	No	80	Programmable	Active High/Push-Pull	SC70-4 (R),SOT-143	Programmable Reset Timeout, Low Quiescent Current, Small Package
SGM803B	0.3	No	1.0 ~ 5.5	4.38,4.00,3.08,2.93,2.63	No	110	240	Active Low/Open-Drain	SOT-23-3,SOT-23	5 Selectable Thresholds, Low Power
SGM804	3	No	1.0 ~ 5.5	2.93,2.63,2.32,1.63	No	80	Programmable	Active Low/Push-Pull	SOT-23-5	Programmable Reset Timeout, Low Quiescent Current
SGM809B	0.3	No	1.0 ~ 5.5	4.38,4.00,3.08,2.93,2.63	No	110	240	Active Low/Push-Pull	SOT-23-3,SOT-23	5 Selectable Thresholds, Low Power
SGM810B	0.3	No	1.0 ~ 5.5	4.38,4.00,3.08,2.93,2.63	No	110	240	Active High/Push-Pull	SOT-23-3,SOT-23	5 Selectable Thresholds, Low Power
SGM811B	0.5	Yes	1.0 ~ 5.5	3.08,2.93,2.63	No	100	200	Active Low/Push-Pull	SOT-143	3 Selectable Thresholds, Manual-Reset Input, Low Power
SGM812B	0.5	Yes	1.0 ~ 5.5	3.08,2.93,2.63	No	100	200	Active High/Push-Pull	SOT-143	3 Selectable Thresholds, Manual-Reset Input, Low Power
SGM820	1.2	Yes	1.6 ~ 6.5	4.8,4.65,3.168,3.069,2.88,2.79,2.4,2.325,1.728,1.674	Programmable	100	200	Active Low/Open-Drain	TDFN-3x3-8L,TDFN-2x2-8L	10 Selectable Thresholds, Watchdog, Manual-Reset Input
SGM823	0.5	Yes	1.0 ~ 5.5	4.63,3.08,2.93,2.63	1.6s	110	200	Active Low/Push-Pull	SOT-23-5	4 Selectable Thresholds, Watchdog, Manual-Reset Input
SGM824	0.5	No	1.0 ~ 5.5	4.63,3.08,2.93,2.63	1.6s	110	200	Active Low/Push-Pull	SOT-23-5	4 Selectable Thresholds, Watchdog
SGM825	0.5	Yes	1.0 ~ 5.5	4.63,3.08,2.93,2.63	No	110	200	Active Low/Push-Pull	SOT-23-5	4 Selectable Thresholds, Manual-Reset Input

# Over-Voltage Protection ICs

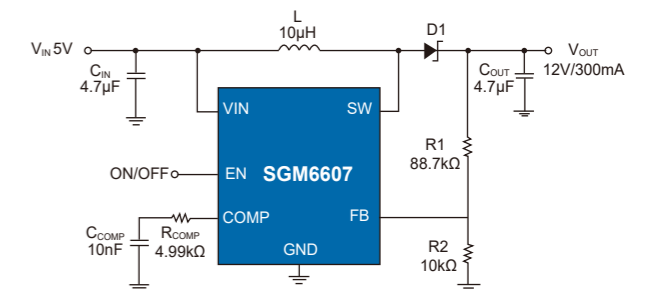
Part Number	Input Over-Voltage Protection Threshold (V)	Input Voltage Max (V)	Battery Over-Voltage Protection Threshold (V)	Maximum Start-Up Output Current (mA)	Shutdown Current (µA)	Soft-Start	Soft-Stop	LDO Mode Output Voltage (V)	Package	Features
SGM40653	Adj (Default 15.39)	28	NA	4500	<1	Yes	NA	NA	WLCSP-1.30x1.83-12B,TDFN-3x3-12L	120V Surge/Inrush Immunity Function, ADJ OVP, 4.5A, Soft Start-Up, 28V Input with Shutdown
SGM40654	Adj (Default 6.8)	28	NA	4500	<1	Yes	NA	NA	WLCSP-1.30x1.83-12B,TDFN-3x3-12L	120V Surge/Inrush Immunity Function, ADJ OVP, 4.5A, Soft Start-Up, 28V Input with Shutdown
SGM40655	Adj (Default 5.81)	28	NA	4500	<1	Yes	NA	NA	WLCSP-1.30x1.83-12B,TDFN-3x3-12L	120V Surge/Inrush Immunity Function, ADJ OVP, 4.5A, Soft Start-Up, 28V Input with Shutdown
SGM41002	4.35,4.45,4.5	24	4.35,4.45,4.5		<3	NA	NA	NA	UTDFN-2x2.5-8L	Battery Protection IC for 2-Serial to 4-Serial-Cell Pack (Secondary Protection)
SGM4062	6.8	18	4.35	1500	<2	Yes	Yes	5.1	TDFN-2x2-8L,MSOP-8 (Exposed Pad)	1.5A Fixed Start-Up Current, Soft-Start, Soft-Stop, 18V Input
SGM4064	6.8	18	4.35	Adj (Max 1500)	<2	Yes	Yes	5.1	TDFN-2x2-8L	Adjustable Start-Up Current, Soft-Start, Soft-Stop, 18V Input
SGM4065	7.1	18	4.35	1500	<2	Yes	Yes	5.1	TDFN-2x2-8L	1.5A Fixed Start-Up Current, Soft-Start, Soft-Stop, 18V Input
SGM4066	7.1	18	4.35	Adj (Max 1500)	<2	Yes	Yes	5.1	TDFN-2x2-8L	Adjustable Start-Up Current, Soft-Start, Soft-Stop, 18V Input

# Li-Ion Battery Chargers and Protection ICs

Part Number	Input Over-Voltage Protection Threshold (V)	Charge Voltage (V)	V <sub>IN</sub> Min (V)	V <sub>IN</sub> Max (V)	Programmable Current (mA)	Shutdown Current From V <sub>IN</sub> (µA)	Status Indication	Foldback Current From Battery (µA)	Package	Features
SGM4056	6.8, 10.5	4.2	4.55	26.5	100 ~ 900	200	Yes	<1	TDFN-3x3-8L, TDFN-2x3-8L, TDFN-2x2-8L, SOIC-8 (Exposed Pad)	100mA ~ 900mA, 6.8V/10.5V Over-Voltage Protection, Input Voltage up to 26.5V
SGM40560		3.65, 4.05, 4.2, 4.3, 4.4	3	9	5 ~ 700	4.8	Yes		TDFN-2x2-6AL, SOIC-8 (Exposed Pad)	Small Capacity Compact Battery Charger for Loosely Coupled Wireless Charging or Solar Charging
SGM40561	10.5	4.2, 4.3, 4.35	4.55	26.5	5 ~ 200	180	Yes	<1	TDFN-2x2-8L	5mA ~ 200mA, 10.5V Over-Voltage Protection, Input Voltage up to 26.5V
SGM40565		4.2, 4.35	4.55	26.5	5 ~ 400	175	Yes	<1	XTDFN-2x2-8L, TDFN-2x2-8L, WLCSP-1.3x0.7-6B	Ultra-Thin Package, 5mA ~ 400mA, 4.2V/4.35V Output Voltage for Long Battery Life Application
SGM41002	4.35, 4.45, 4.5		3.6	24		<3	No		UTDFN-2x2.5-8L	Battery Protection IC for 2-Serial to 4-Serial-Cell Pack (Secondary Protection)
SGM41100	4.2, 4.25, 4.3, 4.35, 4.4, 4.45, 4.5, 4.55		0	6		<0.1	No		UTDFN-1.5x2-6L	Single Battery Protection IC
SGM41101	4.2, 4.25, 4.3, 4.35, 4.4, 4.45, 4.5, 4.55		0	6		<0.1	No		TDFN-2x2-6L	Single Battery Protection IC
SGM41510	14	3.84 ~ 4.608	3.9	22	0 ~ 5000	50	Yes	20	TQFN-4x4-24L	I <sup>2</sup> C Controlled 5A Single-Cell Battery Charge with Power Path Management
SGM41511	6.5, 10.5, 14	3.856 ~ 4.624	3.9	20	0 ~ 3000	50	Yes	20	TQFN-4x4-24L	I <sup>2</sup> C Controlled 3A Single-Cell Battery Charge Management
SGM41524	5.7	4.2, 4.5	4.04	6	0 ~ 2300	14.6	Yes		TDFN-2x3-8BL	Compact Switch Li+/Poly Battery Charger Safe and Reliable Charging

# DC/DC Converters

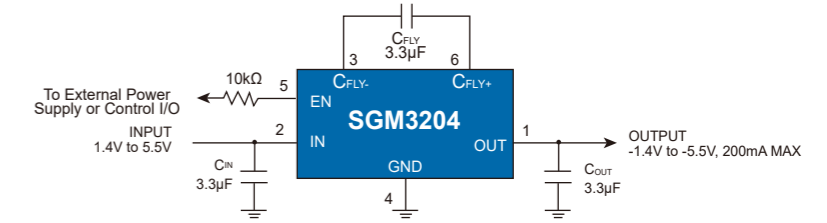
The DC/DC Converter family provides various DC/DC converters with high efficiency, high reliability in six different topologies, featuring high input voltage, low shutdown current, tiny DFN package, and SOIC-8 with exposed pad. All these features make the family extremely suitable for portable and industrial applications.



DC/DC Topology	Part Number	Output Current Max (mA)	V <sub>IN</sub> Min (V)	V <sub>IN</sub> Max (V)	Output Voltage (V)	Switching Frequency (MHz)	Quiescent Current (µA)	Shutdown Current (µA)	Enable Logic	Efficiency Max	Package	Features
Sync Buck	SGM61230	3000	4.5	28	Adj	0.4	30	2	Active High		TSOT-23-6	4.5V to 28V Input, 3A Output, Synchronous Buck
Sync Buck	SGM6033	1000	2.5	5.5	Adj	4.6	26	<1	Active High	90%	TDFN-2x2-6L, WLCSP-1.21x0.81-6B	4.6MHz, 1A Synchronous Buck
Sync Buck	SGM6022	600	2.5	5.5	adj	6	22	<1	Active High	90%	TDFN-2x2-6L	6MHz, 600mA Synchronous Buck
Sync Buck	SGM6032	600	2.5	5.5	0.6/0.8/1.0/1.1/1.15/1.2/1.5/1.6/1.8/2.5/2.8/3.0/3.3	6	22	<1	Active High	90%	TDFN-2x2-6L, WLCSP-1.21x0.81-6B	6MHz, 600mA Synchronous Buck
Sync Buck	SGM61410	600	5	45	Adj	1.2	14	0.8	Active High	95%	SOT-23-6	1.2MHz, 600mA, 45V, Synchronous Buck
Sync Buck	SGM6036	600	1.8	5.5	1.0/1.2/1.5/1.8V/2.5/2.8/3.0/3.3/Adj (1 to 3.3)	0.5	0.45		Active High		UTDFN-1.5x2-6L	Ultra-Low Power Step-Down Converters with up to 600mA Output Current
Sync Boost	SGM6610	10000	2.7	12	Adj (4.5 ~ 12.6)	0.5	80	0.5	Active High	91%	TQFN-4.5x3.5-20L	10A Fully-Integrated, Synchronous Boost
Sync Boost	SGM41280	3000	2.2	4.9	3.35/3.45/3.63/3.85/4.25	2.5	10	0.6	Active High	95%	WLCSP-1.27x1.67-12B, TQFN-3x3-16L	Low Voltage, Wide Input Range, Front-End DC/DC
Sync Boost	SGM6602	900	1.8	5.5	Adj (4.5 ~ 20)	1.1	41	<1	Active High	85%	WLCSP-0.8x1.2-6B, TDFN-2x2-6L	20V Output, Synchronous Boost
LCM Bias Power Supply	SGM3803	200	2.7	5.5	Adj (up to 5.5)	1.2/0.95	30	<1	Active High	90%	TDFN-3x3-12L	P/N Voltage Output, 200mA Output Current Synchronous Boost
LCM Bias Power Supply	SGM3804	100	2.7	5.5	Adj (2.4 ~ 6.4)	1.6	400	<1	Active High	84%	WLCSP-1.7x1.51-12B	P/N Voltage Output, 100mA Output Current Synchronous Boost
AMOLED Display Power Supply	SGM3833A	400	2.9	4.5	Adj (5.8 ~ 7.9)/Adj (4.6 ~ 5.0)/Adj (-4.8 ~ -0.8)	1.5		<1	Active High	92%	TQFN-3x3-16L	Triple-Output, Synchronous Boost, Synchronous Inverting Buck-Boost
AMOLED Display Power Supply	SGM3833B	400	2.9	4.5	Adj (5.8 ~ 7.9)/Adj (4.6 ~ 5.0)/Adj (-5.4 ~ -1.4)	1.5		<1	Active High	92%	TQFN-3x3-16L	Triple-Output, Synchronous Boost, Synchronous Inverting Buck-Boost
AMOLED Display Power Supply	SGM3851A	400	2.9	4.5	Adj (5.8 ~ 7.9)/Adj (4.6 ~ 5.0)/Adj (-5.4 ~ -1.4)	1.5		<1	Active High	92%	TQFN-3x3-16L	Triple-Output, Synchronous Boost, Synchronous Inverting Buck-Boost
AMOLED Display Power Supply	SGM38042	40	2.7	5.5	1.8 or 2.8/Adj (-2.4 ~ -6.4)/Adj (2.4 ~ 6.4)	1.6	500	<1	Active High	87%	WLCSP-1.51x2.10-15B	P/N Voltage Output, 100mA Output Current Synchronous Boost with a 50mA LDO

## Charge Pump DC/DC Converters

Converters per Package	Part Number	Output Current Max (mA)	Shutdown	V <sub>IN</sub> Min (V)	V <sub>IN</sub> Max (V)	Output Voltage (V)	Switching Frequency (kHz)	Quiescent Current (μA)	Shutdown Current (μA)	Output Type	Package	Features
2	SGM3200	500	Yes	2.7	5	5	1700	70	<2	Regulated	TDFN-3×3-8L	Low Noise, Doubler/White LED Driver
1	SGM3204	200	Yes	1.4	5.5	-V <sub>IN</sub>	950	1500	<1	Unregulated	SOT-23-6	Unregulated Inverter, 950kHz, 200mA
1	SGM3110	100	Yes	2.7	5	5	750	60	<1	Regulated	SOT-23-6	Low Noise, Doubler/White LED Driver
1	SGM3209	100	Yes	3	18	-V <sub>IN</sub>	120 ~ 1250	900	<1.2	Unregulated	SOIC-8,TDFN-2×2-8L	Unregulated Inverter, Programmable Frequency, 100mA
1	SGM3206	60	No	1.4	5.5	-V <sub>IN</sub>	47	115	NA	Unregulated	SOT-23-5	Unregulated Inverter, 47kHz, 60mA



## High Reliability Linear Regulators

Part Number	V <sub>IN</sub> Min (V)	V <sub>IN</sub> Max (V)	Output Current (mA)	Dropout Voltage (mV)	Ground Current (No Load) (μA)	PSRR @1kHz (dB)	V <sub>OUT</sub> (V)	Package	Features
SGM2205	2.5	36	800	480	75	75	1.8,2.5,3.0,3.3,3.6,4.2,5.0,12,15,Adj	TDFN-3×3-8L,SOIC-8,SOT-89-3,SOT-223-3,TO-263-5B	High Voltage, Low Noise
SGM2211	2.7	20	500	500	36	95	1.2,1.5,1.8,2.5,2.8,3.0,3.3,3.8,4.2,5.0,Adj	SOIC-8 (Exposed Pad),SOT-223-3,TDFN-2×2-6AL,SOT-23-5	High Voltage, Low Noise
SGM2210	2.5	20	300	270	32	75	3.3,5.0,Adj	SOT-23-5	High Voltage, Low Noise
SGM2034	1.7	7.5	250	75 @100mA	1	27	1.2,1.8,2.5,2.8,3.0,3.3,3.6,5.0	SOT-23-3,SOT-89-3	Ultra Low Current Consumption, Low Dropout
SGM2040	1.7	7.5	250	60 @100mA	1	27	1.2,1.5,1.8,2.5,2.8,3.0,3.3,3.6,4.0,4.2,5.0	SOT-23-5,UTDFN-1×1-4AL	Ultra Low Current Consumption, Low Dropout
SGM2037	0.8	5.5	500	120	37	71	0.8,0.9,1.0,1.05,1.1,1.15,1.2,1.25,1.3,1.5,1.8,2.5,2.8,3.0,3.3,3.6,Adj	SOT-23-5,SOT-23-6,UTDFN-1.2×1.2-6L	Low Noise, Very Low Dropout
SGM2038	0.8	5.5	500	120	37	71	0.8,0.9,1.0,1.05,1.1,1.15,1.2,1.25,1.3,1.5,1.8,2.5,2.8,3.0,3.3,3.6	UTDFN-1.2×1.2-4L	Low Noise, Very Low Dropout
SGM2033	1.8	5.5	250	62	13.5	94	1.2,1.8,2.5,2.8,2.85,2.9,2.95,3.0,3.3,4.2,5.0	SOT-23-5,UTDFN-1×1-4AL	Ultra Low Noise, High PSRR
SGM2209	-2.7	-24	-500	-310	-33	58	1.2,1.5,1.8,2.5,2.8,3.0,3.3,5.0,Adj	TDFN-2×2-6AL,TDFN-3×3-8L,SOT-23-5	High Voltage, Low Noise, High PSRR

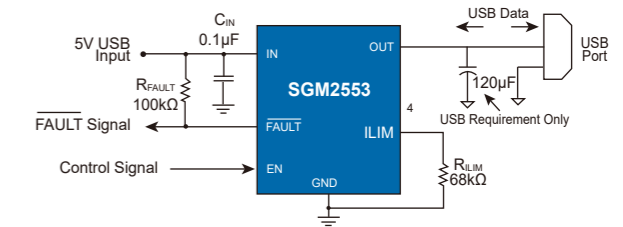
## Isolated Power

Drivers per Package	Part Number	Output Power (W)	V <sub>CC</sub> Range (V)	External Resistance (kΩ)	Input Frequency (kHz)	Logic Low Input Voltage (V)	Logic High Input Voltage (V)	I <sub>CC</sub> Typ (mA)	Package	Features
1	SGM46000	3	2.5 ~ 5.5	5 ~ 390	200 ~ 2000	0.3	2	0.6	SOIC-8 (Exposed Pad),TDFN-2×3-8BL	3W Output Power, Programmable Oscillator Frequency Isolated Power Supplies



# Load Switches

Load switches are integrated electronic relays used for turning on and off power rails, power distribution and power savings. Load switches can be used in telecommunication equipment, computer equipment & peripherals, TVs & STBs, small portable devices, and test equipments with the benefits of reducing overall BOM count and solution size, as well as adding additional protection features.



Switches per Package	Part Number	Continuous Output Current (mA)	Quiescent Current (µA)	V <sub>IN</sub> Min (V)	V <sub>IN</sub> Max (V)	Enable Logic	Shutdown Current (µA)	Current Limit (mA)	Soft-Start	Fault Flag	Package	Features
1	SGM2578	1000	5	1.0	5.0	Active High	<1.5	1600		No	WLCSP-0.9×0.9-4B	1A, Ultra Low Quiescent Current, WLCSP Package
1	SGM2581A	1000	23	2.5	5.5	Active High	<1	1100	Yes	Yes	SOT-23-5	1A Output Current, 1.1A Fixed Current Limit, Low Power, Auto Discharge
1	SGM2588A	1000	23	2.5	5.5	Active High	<1	1100	Yes	Yes	SOT-23-5	1A Output Current, 1.1A Fixed Current Limit, Low Power, Auto Discharge
1	SGM2588G	1000	23	2.5	5.5	Active High	<1	1100	Yes	Yes	SOT-23-5	1A Output Current, 1.1A Fixed Current Limit, Low Power, Default Disable /EN
1	SGM2554A	1100	19	2.2	5.5	Active High	<1	1850	Yes	No	SOT-23-5	1.1A Output Current, 1.85A Fixed Current Limit, Low Power
1	SGM2554B	1100	19	2.2	5.5	None	NA	1750	Yes	No	SOT-23-5	1.1A Output Current, 1.75A Fixed Current Limit, Low Power
1	SGM2555	1100	19	2.2	5.5	Active High	<1	1850	Yes	No	TDFN-2×2-6L	1.1A Output Current, 1.85A Fixed Current Limit, Low Power
1	SGM2551A/C	1500	71	2.5	5.5	Active High	<2.5	Programmable (100~1700)	Yes	No	TDFN-2×2-6L,SOT-23-5	1.5A, Adjustable Current Limit, Soft-Start, Tiny Package
1	SGM2553/D	1500	71	2.5	5.5	Active High	<2.5	Programmable (100~1700)	Yes	Yes	TDFN-2×2-6L,SOT-23-6	1.5A, Adjustable Current Limit, Soft-Start, Tiny Package
1	SGM2581C	2000	23	2.5	5.5	Active High	<1	2100	Yes	Yes	SOT-23-5	2A Output Current, 2.1A Fixed Current Limit, Low Power, Auto Discharge
1	SGM2588C	2000	23	2.5	5.5	Active High	<1	2100	Yes	Yes	SOT-23-5	2A Output Current, 2.1A Fixed Current Limit, Low Power, Auto Discharge
1	SGM2588I	2000	23	2.5	5.5	Active High	<1	2100	Yes	Yes	SOT-23-5	2A Output Current, 2.1A Fixed Current Limit, Low Power, Default Disable /EN
1	SGM2521	2000	170	4.5	24	Active High	<1.4	2000	Yes	Yes	SOIC-8,TDFN-2×3-8BL	24V, 2A, Auto-Recovery Programmable Current Limit Switch
1	SGM2522	2000	170	4.5	24	Active High	<1.4	2000	Yes	Yes	SOIC-8,TDFN-2×3-8BL	24V, 2A, Latched-Off Programmable Current Limit Switch
1	SGM2581E	2500	23	2.5	5.5	Active High	<1	2600	Yes	Yes	SOT-23-5	2.5A <sup>†</sup> Output Current, 2.6A Fixed Current Limit, Low Power, Auto Discharge
1	SGM2588E	2500	23	2.5	5.5	Active High	<1	2600	Yes	Yes	SOT-23-5	2.5A <sup>†</sup> Output Current, 2.6A Fixed Current Limit, Low Power, Auto Discharge
1	SGM2588K	2500	23	2.5	5.5	Active High	<1	2600	Yes	Yes	SOT-23-5	2.5A <sup>†</sup> Output Current, 2.6A Fixed Current Limit, Low Power, Default Disable /EN
1	SGM2525	5000	170	4.5	22	Active High	<1.2	5000	Yes	Yes	TDFN-3×3-10L	Programmable Current Limit Switch with Over-Voltage Protection
1	SGM2526	5000	170	4.5	22	Active High	<1.2	5000	Yes	Yes	TDFN-3×3-10L	Programmable Current Limit Switch with Over-Voltage Protection
1	SGM2566A	6000	15	0.8	5.3	Active High	0.1		Yes	Yes	TDFN-2×2-8L	5.5V, 6A, 17mΩ On-Resistance Load Switch
1	SGM2566B	6000	15	0.8	5.3	Active High	0.1		Yes	Yes	TDFN-2×2-8L	5.5V, 6A, 17mΩ On-Resistance Load Switch
1	SGM4073	6000	1	1.5	5.5	None	<1.5		Yes	No	WLCSP-1.31×1.62-12B	6A, Ultra Low Quiescent Current, Programmable Reset Timer, WLCSP Package
1	SGM2541	±5000	123	3	20	Active Low		±5000	Yes	Yes	WLCSP-2.43×1.75-20B	28V/16V Bidirectional Load Switch with Wireless/Dual Input Capability
1	SGM2576/B	Adj	23	2.5	5.5	Active High	<1	Programmable (400~2500)	Yes	No	SOT-23-5	Adjustable Current Limit, Soft-Start, Low Power
2	SGM2540	2000/1500	88	2.5	20	None		2000	Yes	Yes	UTDFN-2×2-8AL	Autonomous 20V Charging Sources Selection and OTG Feeding Switch Combo
2	SGM2558A	600/CH	28	2.7	5.5	Active High	<1	1100	Yes	Yes	SOIC-8,TDFN-3×3-8L	600mA Output Current, 1.1A Fixed Current Limit, Dual Channels
2	SGM2558B	600/CH	28	2.7	5.5	Active Low	<1	1100	Yes	Yes	SOIC-8,TDFN-3×3-8L	600mA Output Current, 1.1A Fixed Current Limit, Dual Channels
2	SGM2560A	600/CH	28	2.7	5.5	Active High	<1	1100	Yes	Yes	SOIC-8,TDFN-3×3-8L	600mA Output Current, 1.1A Fixed Current Limit, Dual Channels
2	SGM2560B	600/CH	28	2.7	5.5	Active Low	<1	1100	Yes	Yes	SOIC-8,TDFN-3×3-8L	600mA Output Current, 1.1A Fixed Current Limit, Dual Channels

Note: † This parameter is guaranteed by design and characterization.

## Motor Drivers

Full Bridges per Package	Part Number	V <sub>CC</sub> Min (V)	V <sub>CC</sub> Max (V)	RMS Output Current (A)	Peak Output Current (A)	Control Interface	R <sub>DS(ON)</sub> (HS+LS) per Channel (mΩ)	Operating Temperature Range (°C)	Package	Features
1	SGM42507	1.9	7.5	1.5		PH/EN	555	-40 to +125	SC70-6, TSOT-23-6	1.5A, 7.5V H-Bridge Driver for Motor/Coil
2	SGM42600	2.7	24	1.5	2	PWM	410	-40 to +125	TSSOP-16 (Exposed Pad), TQFN-4×4-16L	Dual H-Bridge Motor Driver
1	SGM42609	2.7	24	1.5	2	PWM	480	-40 to +125	MSOP-10, TDFN-3×3-10L	Single H-Bridge Motor Driver
2	SGM42630	8	36		2.5	PH/EN	280	-40 to +125	TSSOP-28 (Exposed Pad)	Stepper Motor Controller IC

## MOSFET Drivers

Drivers per Package	Part Number	Output Peak Current (A)	V <sub>CC</sub> (V)	Rise Time (ns)	Fall Time (ns)	Logic Low Input Voltage (V)	Logic High Input Voltage (V)	Input Hysteresis (V)	I <sub>CC</sub> Typ (mA)	Package	Features
2	SGM48000	2	4.5 ~ 26.5	12	13	0.7	1.6	0.3	1.14	SOIC-8, TDFN-2×2-8L	2A Peak Current, 26.5V, Dual Non-Inverting
2	SGM48001	2	4.5 ~ 26.5	12	13	0.7	1.6	0.3	1.29	SOIC-8, TDFN-2×2-8L	2A Peak Current, 26.5V, Dual Inverting
2	SGM48002	2	4.5 ~ 26.5	12	13	0.7	1.6	0.3	1.19	SOIC-8, TDFN-2×2-8L	2A Peak Current, 26.5V, Inverting and Non-Inverting
1	SGM48005	9/12	3 ~ 15	2.9	3.6	1.2	2.4		1	TSSOP-14	Zero Overshoot, Large Swing MOSFET Driver with Precision Dual-Rail Generation Circuit