

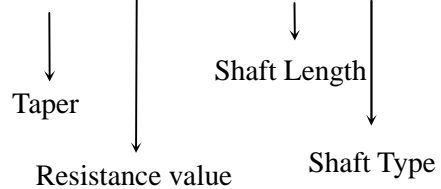


**12mm Insulated Shaft Rotary Potentiometers**

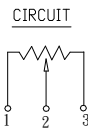
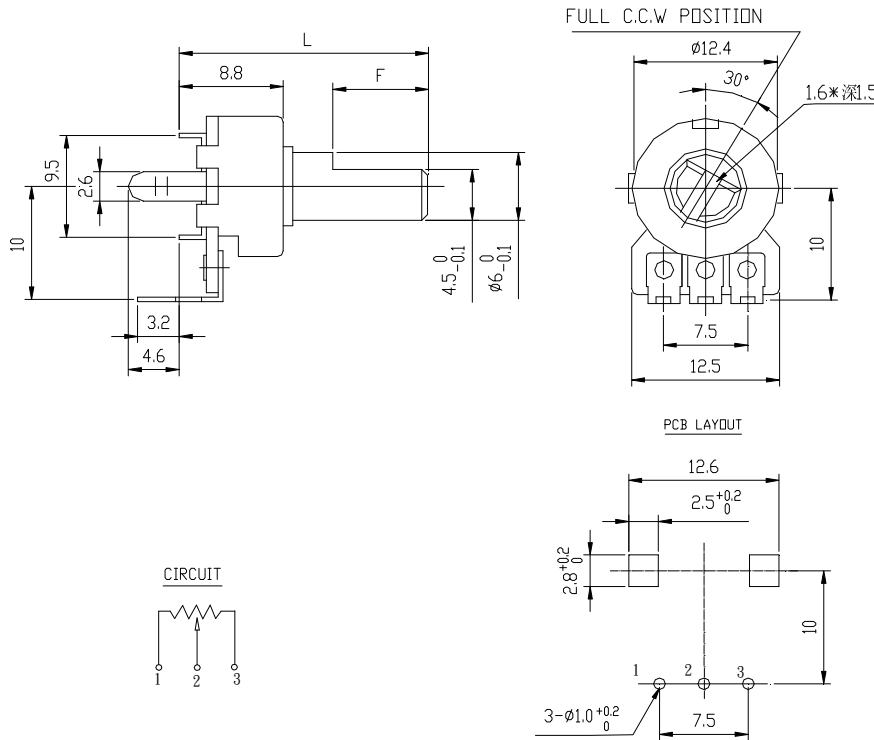


**Part Number**

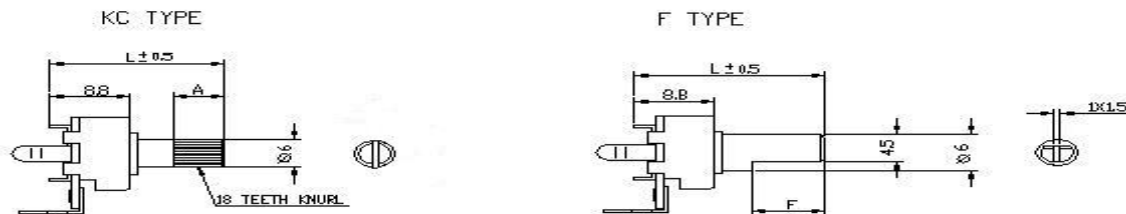
**R1212N – B 50K , L- 20 F**



**Dimensions**



**Shaft Type**



Vertical Shaft Dimensions and Style

KC	L	15	20	25	30	
	A	5	8	12	12	
F	L	15	17	20	25	30
	F	5	7	8	12	12

**12mm Insulated Shaft Rotary Potentiometers****General**

<b>Operating temperature</b>	<b>- 1 0 °C ~ + 7 0 °C</b>
<b>Manual soldering</b>	<b>300°C Max 3sec</b>

**Electrical Characteristics**

<b>Total resistance</b>	<b>1K~2MΩ</b>
<b>Resistance tolerance</b>	<b>±20 % (more than 1MΩ±30%)</b>
<b>Resistance taper</b>	<b>A B C W</b>
<b>Sliding noise</b>	<b>Less than 47mV</b>
<b>Residual resistance</b>	<b>R &gt; 10K : ≤ 20Ω    R ≤ 10K : ≤ 10Ω</b>
<b>Insulation resistance</b>	<b>More than 50 MΩ at DC 500V</b>
<b>Rated power(W)</b>	<b>Linear (B) : 0.08W    Other Than : 0.04W</b>
<b>Max. Operating voltage</b>	<b>Linear (B) : AC150V    Other Than : AC100V</b>
<b>Withstand voltage</b>	<b>1 Minute at A C 250V</b>

**Mechanical Characteristics**

<b>Total rotational angle</b>	<b>300 °±10 °</b>
<b>Rotational torque</b>	<b>20~200 gf.cm</b>
<b>Shaft push-pull strength</b>	<b>7Kgf. Max.</b>
<b>Rotational stopper strength</b>	<b>5Kgf.cm Max</b>
<b>Rotational life</b>	<b>15,000 Cycles</b>