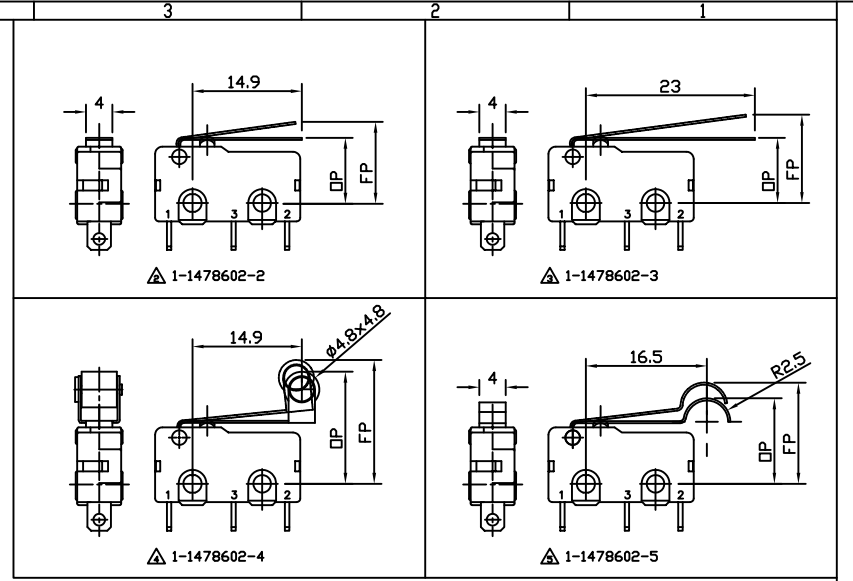
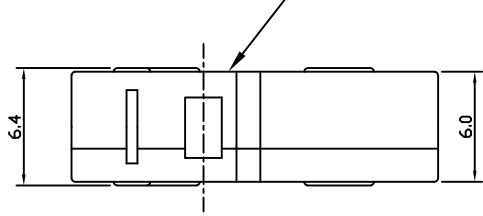
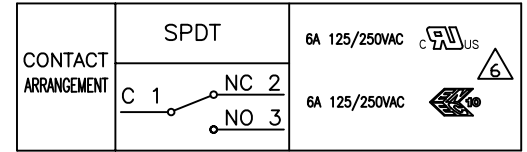


△ 1-1478602-1

TE LOGO AND PART NUMBER MARKED IN THIS AREA



SPECIFICATIONS	
Rating	6A 125/250V AC
Contact Resistance	50 mΩ max.
Insulation Resistance	100 MΩ min. DC500V
Dielectric Strength	1000V AC 1 minute
Mechanical Life	1,000,000 cycles
Electrical Life	50,000 cycles @6A 250V, resistive load
Operating Temperature Range	-40°C to +125°C RH 85% max.
Soldering Temperature	260 ± 5°C 3sec



7	CONTACT	Ag ALLOY	
6	TERMINAL	BRASS SILVER PLATED	
5	TERMINAL	BRASS SILVER PLATED	
4	TERMINAL	BRASS SILVER PLATED	
3	BUTTON	PBT RESIN	BLACK
2	COVER	PBT RESIN	GREY
1	BASE	PBT RESIN	GREY
PART NO:	PART NAME:	MATERIAL/SURFACE:	OPTIONAL DESCRIPTION

△ VDE/ENEC APPROVAL IN PROGRESS

TE SALES PART No.	TE PART NO	DESCRIPTION	CHARACTERISTICS						△
			Operating Force	Releasing Force min	Pre Travel max	Operating Position	Over Travel min	Movement Differential max	
SP6DTAOLE	1-1478602-1	Microswitch, Pin Plunger	160 ±30 g	35 g	0,6 mm	8,4 ±0,3 mm	0,5 mm	0,2 mm	△
SP6DTANLE	1-1478602-2	Microswitch, Norm Lever	45 ±15 g	8 g	3,0 mm	9,4 ±1,0 mm	1,0 mm	1,0 mm	△
SP6DTALLE	1-1478602-3	Microswitch, Long Lever	25 ±10 g	5 g	3,7 mm	10,0 ±1,5 mm	1,5 mm	1,5 mm	△
SP6DTANRE	1-1478602-4	Microswitch, Norm Roller	40 ±15 g	8 g	2,5 mm	15,0 ±0,8 mm	1,0 mm	1,0 mm	△
SP6DTASME	1-1478602-5	Microswitch, Simu Roller	45 ±15 g	10 g	2,6 mm	10,8 ±0,8 mm	1,0 mm	1,0 mm	△

PART LIST				DIMENSIONS: mm			
test dimen / Prüfmaß				auxiliary dimen / Hilfsmaß ()			
theor. dimen / theor. Maß				production control dimen / Fertigungs-kontrollmaß ()			
theor. dimen / theor. Maß				dimen for measure. technology / messtechn. rel. Maß ()			
DEPARTMENT	DISE / R/SF	DRAWER		27-03-08		SA008712	
CHECKED	APPROVED	DATE		DATE		NAME	
R	21-04-09	VEIH	TOLERANCES SPECIFIED	APPROVED		DATE	
ECR-NO:	DATE	NAME	INFO	DATE		NAME	

TOLERANCES UNLESS OTHERWISE SPECIFIED
x +/-0,5mm
xx +/-0,2mm
xxx +/-0,1mm

SCALE:	NAME:	IMG NO:	△ 1478602
MICRO SWITCH 6A 160g RANGE		OPTIONAL NO:	
SOLDER TERMINAL			
REPLACEMENT FOR:	IMG LOC NO:	IF SHEET: 1	OF 1
REVISION: R		A 2	

THIS INFORMATION IS CONFIDENTIAL AND PROPRIETARY TO TYCO ELECTRONICS AUSTRIA GMBH AND ITS AFFILIATES. IT MAY NOT BE DISCLOSED TO ANYONE, INCLUDING PERSONNEL, WITHOUT WRITTEN AUTHORIZATION FROM TYCO ELECTRONICS AUSTRIA.